

**Instruction Manual**  
**MJ522**  
**Mobile Hydraulic Scissor Lift Table**  
**1100 lbs. (500 kg)**



**KLETON**

## **WARNING!**

Read this operation manual carefully and understand fully the operating instructions. Improper use of this unit could result in injury.

- DO NOT put foot or hand in scissor mechanism.
- Keep neighbouring persons away from the unit when in use.
- DO NOT stand in front or behind of lift table when it is in use.
- DO NOT crawl under the table.
- DO NOT put foot in front of rolling wheels.
- DO NOT use lift table on slope or inclined surfaces.
- DO NOT lift or ride people on this unit.

## **CAUTION!**

- DO NOT move this unit when lifting or lowering the bed or when the bed is in an elevated position. (Bed must be lowered when the unit is running)
- DO NOT use this table for any purpose other than it's intended use and do not load with more than the rated capacity.
- DO NOT allow persons to operate this table without complete understanding of its operation.
- DO NOT lower the bed too quickly.
- During loading/unloading operation, do not release the parking brake.
- Load should be distributed on at least 80% of the table area. Stop operation of lift table if load becomes too unstable, do not place objects protruding off edge of the bed.
- DO NOT modify lift table without manufacturers written consent.

## **Daily Inspection**

Daily inspection of this unit is critical in order to locate any malfunction or fault. Check the following daily before operating your lift table.

1. Check for bending or cracking of the lift table.
2. Check for any oil leakage from the cylinder.
3. Check for vertical creep of the table.
4. Check for smooth movement of the wheels.
5. Ensure that brakes are fully functional.
6. Ensure that all nuts and bolts are firmly tightened.

## **Assembly method**

The lift table is packed in a cardboard box. Assembling of the jack up handle and pedal is required.

**WARNING:** Assembly work must be done on a flat surface; wheels must be choked to prevent accidental rolling of the unit.

- 1.** Remove nuts and spring washers from the end of handle and insert the handle into the holes on frame. Tighten the handle using removed nuts and washers with the largest hex key supplied in the box.
- 2.** Insert the jack pedal into the pedal pipe and position the tapered side pedal end to right. Tighten the jack pedal using the removed nut and washer with the smallest hex key supplied in the box.

# OPERATING THE LIFT TABLE

## How to use the brake

The brake is located next to the swivel caster on right hand side.

1. To brake the lift table, press the brake pedal.
2. To release the brake, lift up the brake pedal.

**CAUTION:** Put lift table in brake mode when stationary in order to prevent sudden movement.

## Lifting the Table

To lift the table, press the lifting pedal several times until the table reaches the desired height. The table lowers slightly after reaching the highest position. Maximum Capacity of this table is 1100 lbs. (500 kg).

**WARNING:** Do not overload lift table, stay within the rated capacity.

Do not load the table on sides or ends only. Load must be distributed on at least 80% of table area.

## Lowering the Table

**WARNING:** DO NOT put foot or hand in scissor mechanism. The rotating knob lowers the table.

**NOTE:** The hydraulic cylinder is designed to hold table. As is the nature of the hydraulic system, table lowers very slowly over an extended period of time. Please note that the table does not stay at the same height indefinitely.

## Specifications

| Model | Capacity             | Table                        | Table Height               | Foot Pedal Strokes to Elevate | Wheel        | Weight              |
|-------|----------------------|------------------------------|----------------------------|-------------------------------|--------------|---------------------|
| MJ522 | 500 kg.<br>1100 lbs. | 1600 x 810 mm<br>63" x 31.9" | 286-915 mm<br>11.25" x 36" | 55                            | 127 mm<br>5" | 154 kg.<br>340 lbs. |

## Service Instructions

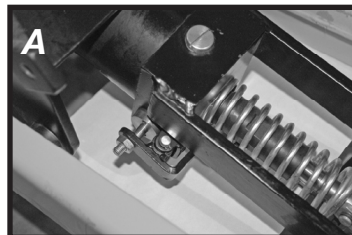
**Change hydraulic oil every 12 months**

**Lubricate the following areas every month:** Fitting of Cylinder/oil, Roller Friction Surface/grease, Link Pin/oil, Pedal Fitting Point/oil, Grease Nipple/grease

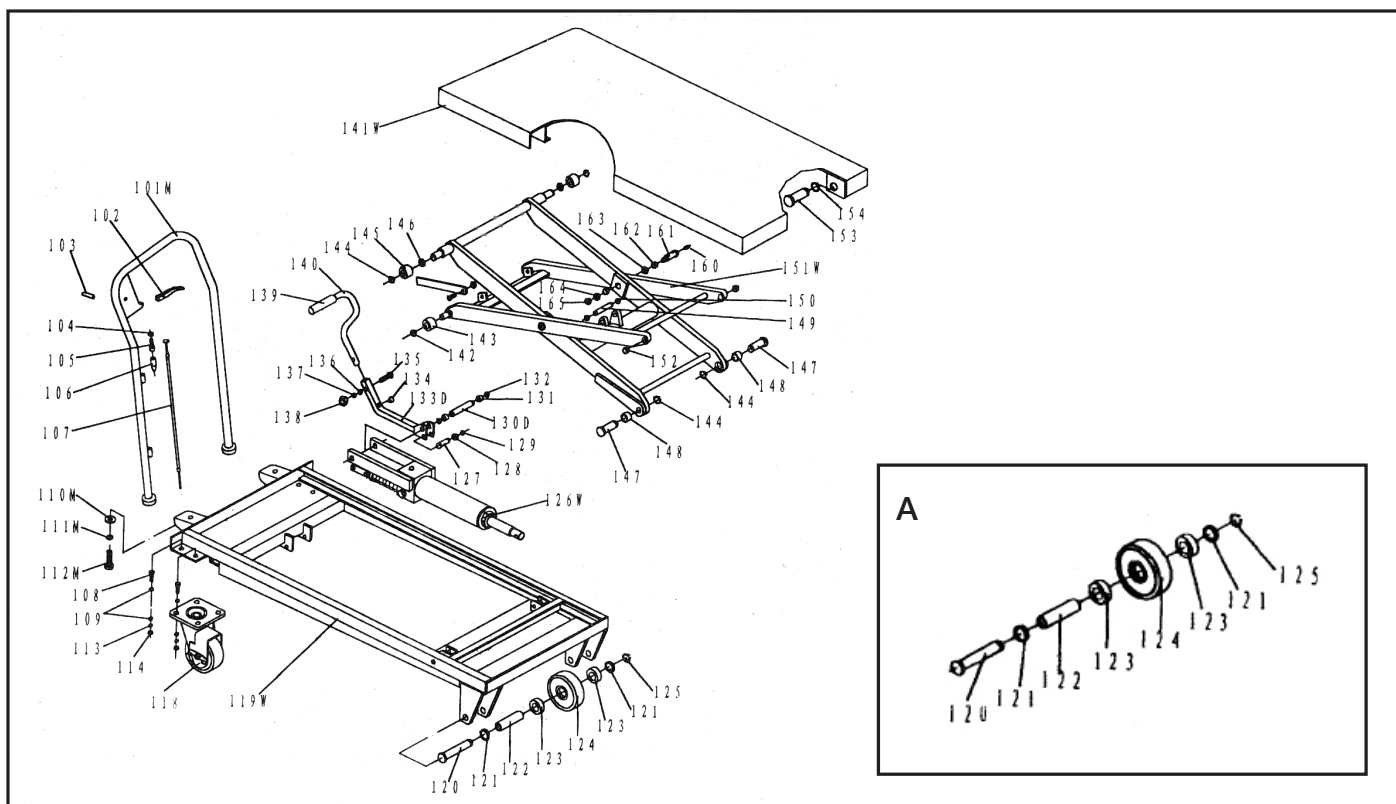
## Troubleshooting

**If the table does not lift when pressing lifting pedal several times:**

- Adjust the control valve located on the hydraulic cylinder (A) by releasing the set screw and locking nut (B) using a flat screwdriver and a 14mm wrench.
- Test the control lever and lifting pedal.



# LIFT TABLE PARTS LIST

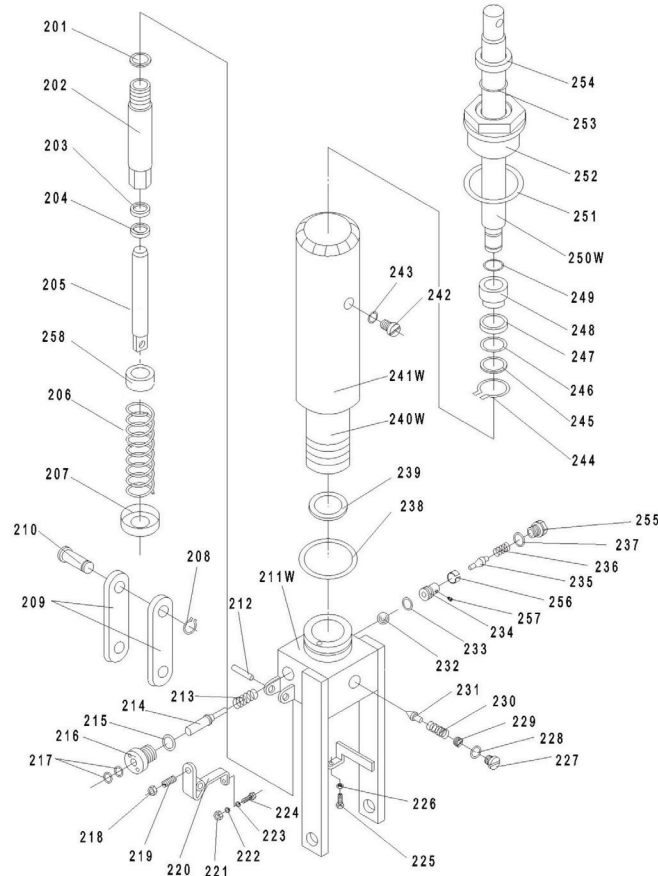


| Part No. | Order No. | Description     | Qty. |
|----------|-----------|-----------------|------|
| 101M     |           | Handle Grip     | 1    |
| 102      |           | Control Handle  | 1    |
| 103      |           | Elastic Pin     | 1    |
| 104      |           | Nut             | 1    |
| 105      |           | Bolt with Hole  | 1    |
| 106      |           | Jacket          | 1    |
| 107      | MJ990     | Pull Rod        | 1    |
| 108      |           | Bolt            | 8    |
| 109      |           | Washer          | 16   |
| 110M     |           | Big Washer      | 2    |
| 111M     |           | Elastic Washer  | 2    |
| 112M     |           | Bolt            | 2    |
| 113      |           | Elastic Washer  | 8    |
| 114      |           | Nut             | 8    |
| 118      | MK114     | Universal Wheel | 2    |
| 119W     |           | Frame           | 1    |
| 120      |           | Pin             | 2    |
| 121      |           | Washer          | 4    |
| 122      |           | Axle            | 2    |
| 123      | MK119     | Bearing         | 4    |

| Part No. | Order No. | Description      | Qty. |
|----------|-----------|------------------|------|
| 124      |           | Wheel            | 2    |
| 125      |           | Retaining Ring   | 2    |
| 126W     | MK122     | Pump Unit        | 1    |
| 127      |           | Pin              | 1    |
| 128      |           | Washer           | 1    |
| 129      |           | Retaining Ring   | 2    |
| 130D     |           | Pin              | 2    |
| 131      |           | Washer           | 2    |
| 132      |           | Retaining Ring   | 2    |
| 133D     |           | Connecting Rod   | 1    |
| 134      |           | Cushion          | 1    |
| 135      |           | Bolt             | 1    |
| 136      |           | Washer           | 1    |
| 137      |           | Elastic Washer   | 1    |
| 138      |           | Nut              | 1    |
| 139      | MK135     | Protecting Cover | 1    |
| 140      |           | Pedal Bar        | 1    |
| 141W     |           | Table            | 1    |
| 142      |           | Retaining Ring   | 2    |
| 143      |           | Roller           | 2    |

| Part No. | Order No. | Description    | Qty. |
|----------|-----------|----------------|------|
| 144      |           | Retaining Ring | 4    |
| 145      |           | Roller         | 2    |
| 146      |           | Washer         | 2    |
| 147      |           | Pin            | 2    |
| 148      |           | Bushing        | 2    |
| 149      |           | Pin            | 1    |
| 150      |           | Retaining Ring | 2    |
| 151W     |           | Fork Arm       | 1    |
| 152      |           | Bushing        | 2    |
| 153      |           | Pin            | 2    |
| 154      |           | Retaining Ring | 2    |
| 160      |           | Oil Holder     | 1    |
| 161      |           | Shaft          | 2    |
| 162      |           | Bushing        | 4    |
| 163      |           | Washer         | 2    |
| 164      |           | Washer         | 2    |
| 165      |           | Nut            | 2    |
| A        | MN687     | Wheel Assembly | 2    |

# HYDRAULIC CYLINDER PARTS LIST



| Part No. | Order No. | Description    | Qty |
|----------|-----------|----------------|-----|
| 201      |           | Seal Washer    | 1   |
| 202      |           | Pump Cylinder  | 1   |
| 203      | MJ701     | Dust Ring      | 1   |
| 204      | MJ702     | Y-Seal         | 1   |
| 205      |           | Pump Piston    | 1   |
| 206      |           | Spring         | 1   |
| 207      |           | Spring Cap     | 1   |
| 208      |           | Retaining Ring | 1   |
| 209      |           | Joint Plate    | 2   |
| 210      |           | Pin            | 1   |
| 211      |           | Pump Body      | 1   |
| 212      |           | Elastic Pin    | 1   |
| 213      |           | Spring         | 1   |
| 214      |           | Strike Pin     | 1   |
| 215      | MJ713     | Seal Washer    | 1   |
| 216      |           | Axle Sleeve    | 1   |
| 217      | MJ715     | O-Ring         | 2   |
| 218      | MK177     | Nut            | 1   |
| 219      |           | Screw          | 1   |
| 220      |           | Lever Plate    | 1   |

| Part No. | Order No. | Description              | Qty |
|----------|-----------|--------------------------|-----|
| 221      |           | Nut                      | 1   |
| 222      |           | Elastic Washer           | 1   |
| 223      |           | Washer                   | 1   |
| 224      |           | Bolt with Hole           | 1   |
| 225      |           | Bolt with Hole           | 1   |
| 226      |           | Nut                      | 1   |
| 227      |           | Plug                     | 1   |
| 228      | MJ726     | O-Ring                   | 1   |
| 229      |           | Adjusting Bolt           | 1   |
| 230      |           | Spring                   | 1   |
| 231      |           | Spindle of Safety Valve  | 1   |
| 232      |           | Steel Ball               | 1   |
| 233      | MJ731     | O-Ring                   | 1   |
| 234      |           | Seat of Pumping Valve    | 1   |
| 235      |           | Spindle of Pumping Valve | 1   |
| 236      |           | Spring                   | 1   |
| 237      |           | Seal Washer              | 1   |
| 238      | MJ736     | O-Ring                   | 1   |
| 239      | MJ737     | Seal Washer              | 1   |

| Part No. | Order No. | Description            | Qty |
|----------|-----------|------------------------|-----|
| 240      |           | Cylinder               | 1   |
| 241      |           | Housing                | 1   |
| 242      |           | Bolt                   | 1   |
| 243      |           | Seal Washer            | 1   |
| 244      |           | Retaining Ring         | 1   |
| 245      |           | Washer                 | 1   |
| 246      | MP943     | O-Ring                 | 1   |
| 247      | MJ745     | Cup Packing            | 1   |
| 248      |           | Piston                 | 1   |
| 249      | MJ747     | O-Ring                 | 1   |
| 250      |           | Piston Rod             | 1   |
| 251      |           | Seal Washer            | 1   |
| 252      |           | Cylinder Cap           | 1   |
| 253      | MJ751     | O-Ring                 | 1   |
| 254      | MJ752     | Dust Ring              | 1   |
| 255      |           | Plug                   | 1   |
| 256      |           | Liquid Throttle Sheath | 1   |
| 257      |           | Bolt                   | 1   |
| 258      |           | Ajusting Sleeve        | 1   |