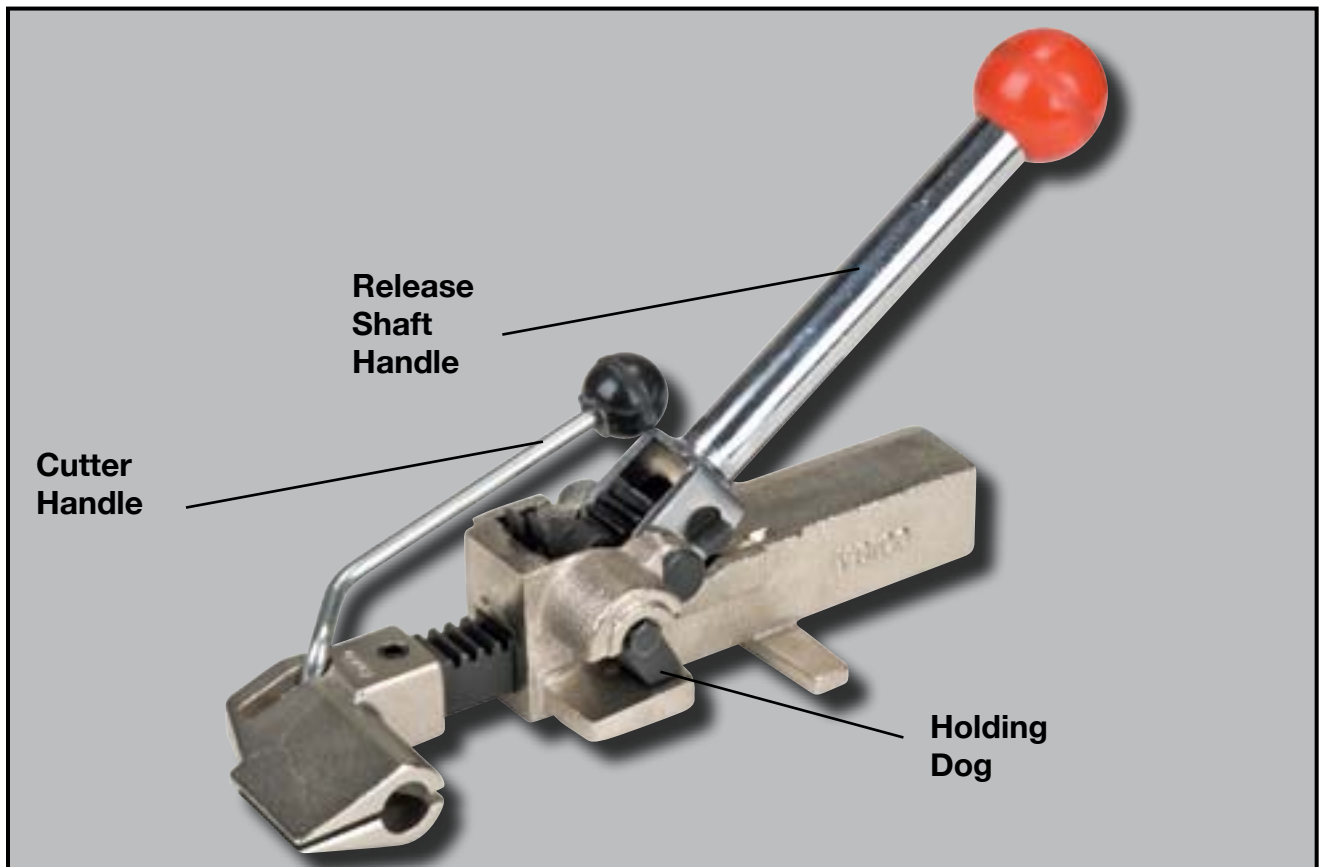


---

# Instruction Manual

## **PE350**

### Steel Strapping Push Bar Tensioner for Irregular Surfaces



**KLETON**

---

---

# PE350 INSTRUCTIONS

## How to use a steel strapping push bar tensioner



### 1. Threading Tensioner

- Wrap both ends of strapping around product.
- Insert closed seal on the strap towards you.
- Bend approximately 1 1/2" of the strap under the seal.
- Insert the other end of the strap into the top of the seal.
- Pull strapping as close to product as possible to reduce amount of tensioning that will be necessary.



### 2. Tensioning

- Feed the loose end of strap through the tool front end and holding dog.
- Operate the lever to push the closed seal and bent strap forward.
- Continue cranking motion until strapping has reached desired tension.



### 3. Sealing

- Using a steel strapping sealer for close seals like PE351, PE352 or PE353; crimp the seal.



### 4. Remove excess steel strapping

- Lift front smaller lever to cut excess steel strapping with included shear.



### 5. Resetting the tool

- To put the tool back to its retracted position, bring the large lever all the way toward the front of the tool until it engages both pawls to put the rail into neutral and allow it to slide freely.

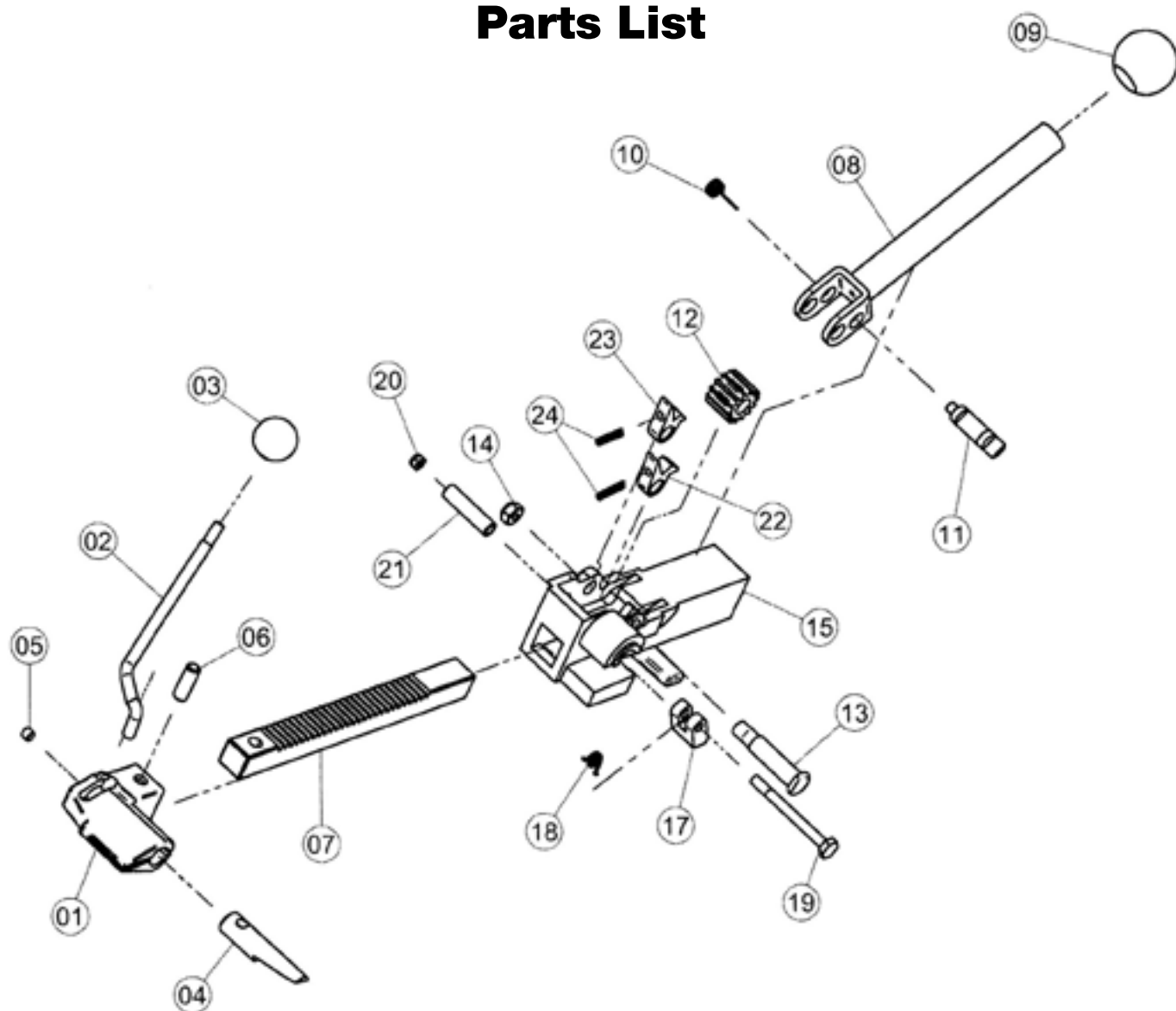


### MAINTENANCE

Tools do need to be cleaned and maintained periodically with a steel brush or dry compressed air. Lubricate all moving parts with light machine oil.

---

# PE350 Parts List



Part No.	Part Name	Qty/Tool	Part No.	Part Name	Qty/Tool
01	Nose	1	13	Gear Pin	1
02	Cutter Handle	1	14	Nylon Nut 3/8"	1
03	Handle Ball	1	15	Body	1
04	Cutter	1	17	Claw	1
05	Screw 1/4"x1/4"L	1	18	Claw Spring	1
06	Pin 8x24	1	19	Claw Pin	1
07	Rack	1	20	Nylon Nut M6	1
08	Tensioning Handle	1	21	Pipe	1
09	Tensioning Handle Ball	1	22	Long Pawl	1
10	Spring	1	23	Short Pawl	1
11	Gear Kicker	1	24	Pawl Spring	2
12	Ratchet Gear	1			

---

# PE350 Safety Instructions

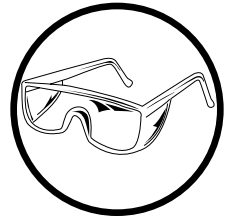
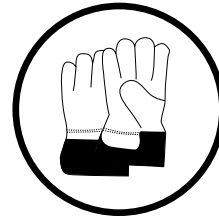
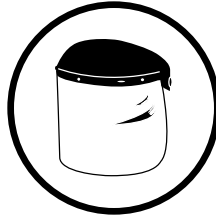
## 1.

This tool (or cutter) was designed and manufactured for safe handling during operation. For effective use of this product, please read and follow all safety, maintenance and operating instructions.



## 2.

Always wear, eye face and hand protection when operating this tool



## 3.

Do not put hands or other parts of the body between the strap and the package.



## 4.

When cutting the strap, hold the upper portion and stand at a safe distance away from the strap, as the lower strap will snap forward.



## 5.

Do not stand in line with the strap while it is being tensioned, the strap could break if over tensioned.



## 6.

Use the original packing products replacement parts.

