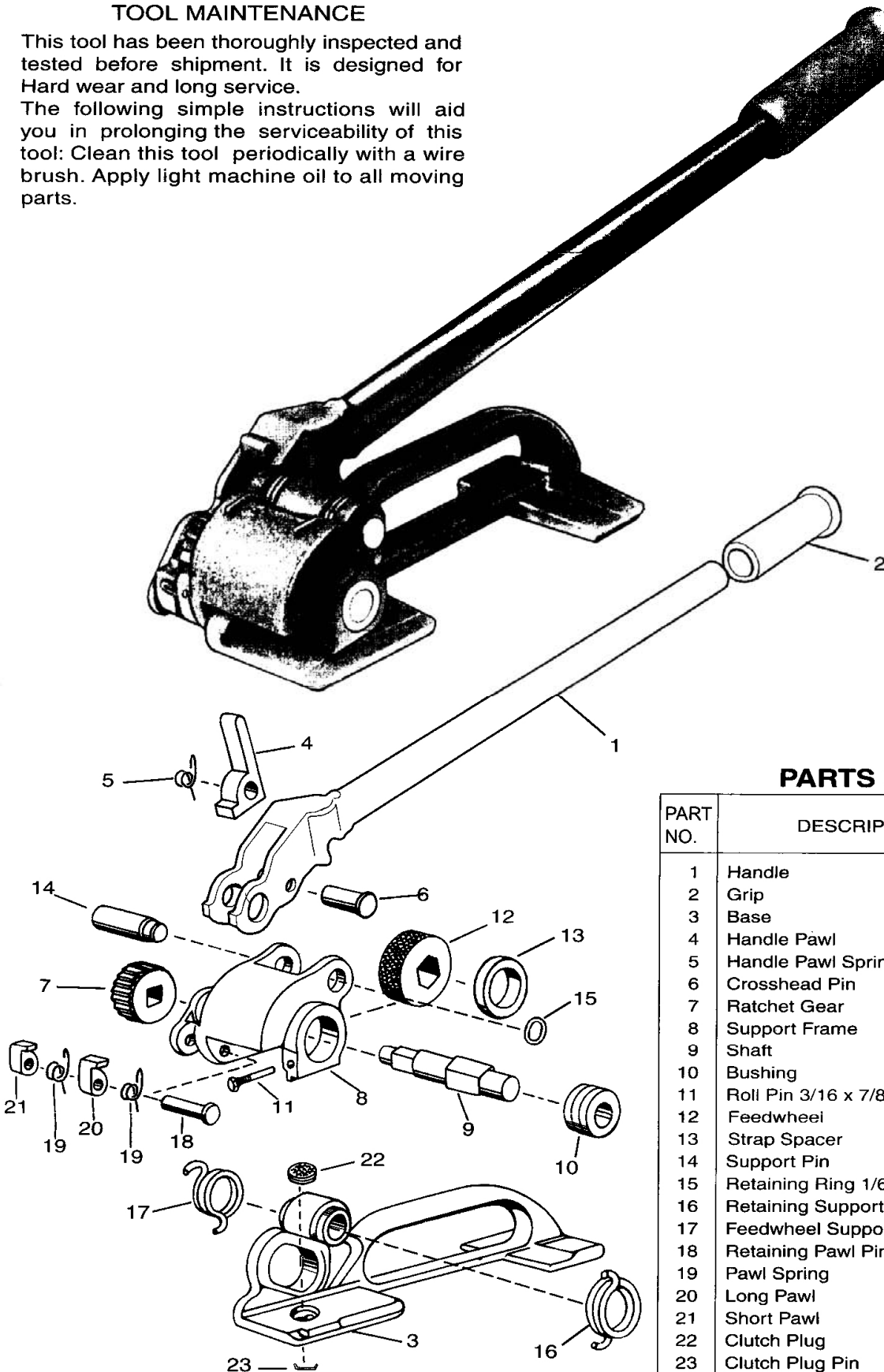


PC399 3/4" to 1 1/4" HD feed-wheel steel tensioner

TOOL MAINTENANCE

This tool has been thoroughly inspected and tested before shipment. It is designed for Hard wear and long service.

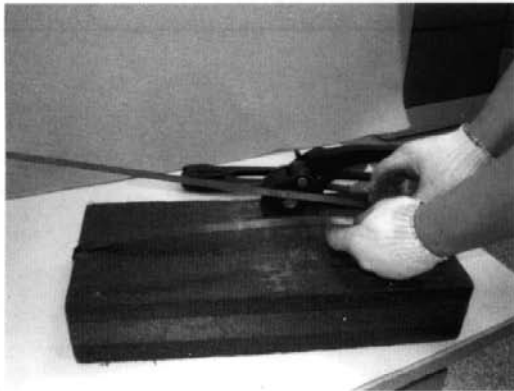
The following simple instructions will aid you in prolonging the serviceability of this tool: Clean this tool periodically with a wire brush. Apply light machine oil to all moving parts.



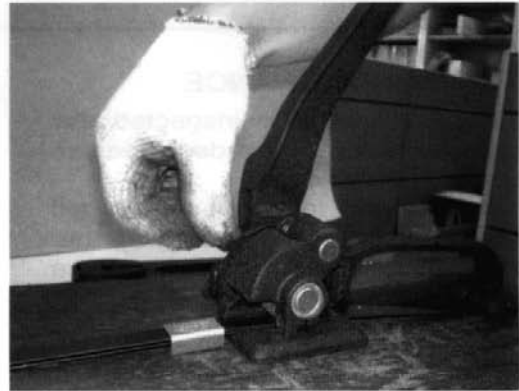
PARTS LIST

PART NO.	DESCRIPTION	QTY/ TOOL
1	Handle	1
2	Grip	1
3	Base	1
4	Handle Pawl	1
5	Handle Pawl Spring	1
6	Crosshead Pin	1
7	Ratchet Gear	1
8	Support Frame	1
9	Shaft	1
10	Bushing	1
11	Roll Pin 3/16 x 7/8	1
12	Feedwheel	1
13	Strap Spacer	1
14	Support Pin	1
15	Retaining Ring 1/6w. x 1/2 I.D.	1
16	Retaining Support Spring	1
17	Feedwheel Support Spring	1
18	Retaining Pawl Pin	1
19	Pawl Spring	2
20	Long Pawl	1
21	Short Pawl	1
22	Clutch Plug	1
23	Clutch Plug Pin	1

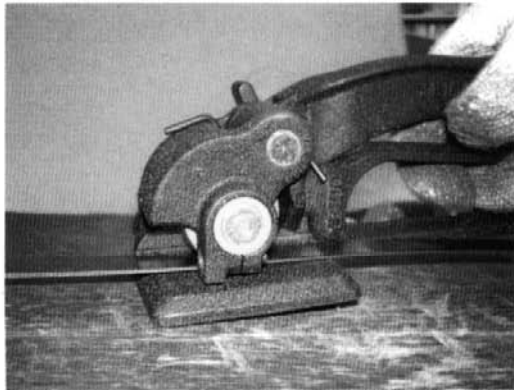
OPERATING INSTRUCTIONS



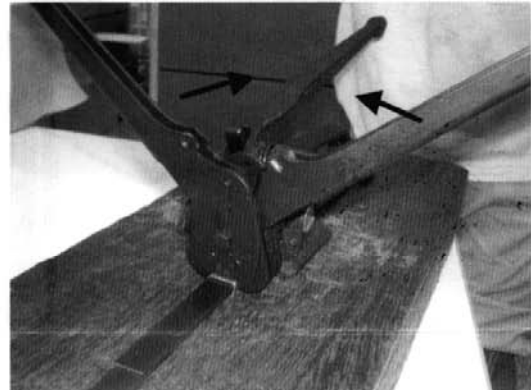
1. Place the strap around the object you wish to secure as shown. The end of strap is underneath.



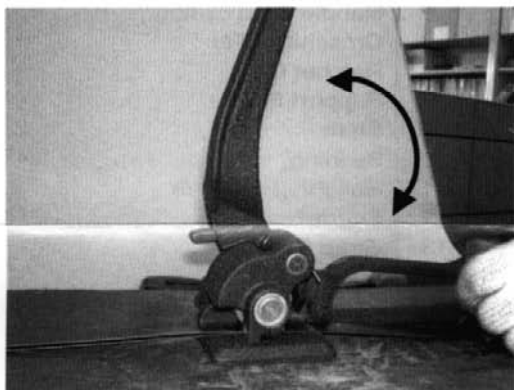
4. Press the Handle Pawl (#4) down so that the Handle (#1) can be released. Place the seal (not included) open side down over both straps in front of the tool.



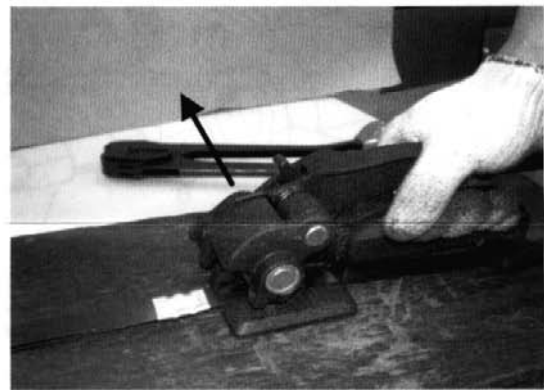
2. Compress the Handle (#1) to lift Support Frame (#8). While in this position, move the tool and slide the strap into the gap below the Feedwheel (#12). The strapping material is now locked and ready to be tightened.



5. Open the sealer (not included) fully open position, put the sealer on the top of the seal, press the sealer handle together to fully crimp the seal, then remove the sealer.



3. Hold the tool with your left hand and pump the Handle (#1) until the straps are sufficiently tight. Don't overtighten the straps as damage may occur to the tool and object being strapped.



6. Compress down the Handle (#1) to lift the Feedwheel (#12). Slide the tool away from the strapping material. Cut excess strap with a steel strapping cutter (not included).