
Instruction Manual

MP008

Mobile Hydraulic Scissor Lift Table

1100 lbs. (500 kg)



KLETON

WARNING!

Read this operation manual carefully and understand fully the operating instructions. Improper use of this unit could result in injury.

- DO NOT put foot or hand in scissor mechanism.
- Keep neighbouring persons away from the unit when in use.
- DO NOT stand in front or behind of lift table when it is in use.
- DO NOT crawl under the table.
- DO NOT put foot in front of rolling wheels.
- DO NOT use lift table on slope or inclined surfaces.
- DO NOT lift or ride people on this unit.

CAUTION!

- DO NOT move this unit when lifting or lowering the bed or when the bed is in an elevated position. (Bed must be lowered when the unit is running)
- DO NOT use this table for any purpose other than it's intended use and do not load with more than the rated capacity.
- DO NOT allow persons to operate this table without complete understanding of its operation.
- DO NOT lower the bed too quickly.
- During loading/unloading operation, do not release the parking brake.
- Load should be distributed on at least 80% of the table area. Stop operation of lift table if load becomes too unstable, do not place objects protruding off edge of the bed.
- DO NOT modify lift table without manufacturers written consent.

Daily Inspection

Daily inspection of this unit is critical in order to locate any malfunction or fault. Check the following daily before operating your lift table.

1. Check for bending or cracking of the lift table.
2. Check for any oil leakage from the cylinder.
3. Check for vertical creep of the table.
4. Check for smooth movement of the wheels.
5. Ensure that brakes are fully functional.
6. Ensure that all nuts and bolts are firmly tightened.

Assembly method

The lift table is packed in a cardboard box. Assembling of the jack up pedal is required.

WARNING: Assembly work must be done on a flat surface; wheels must be chocked to prevent accidental rolling of the unit.

1. Insert the jack pedal into the pedal pipe and position the tapered side pedal end to right. Tighten the jack pedal using the removed nut and washer with the smallest hex key supplied in the box.
-

OPERATING THE LIFT TABLE

How to use the brake

The brake is located next to the swivel caster on right hand side.

1. To brake the lift table, press the brake pedal.
2. To release the brake, lift up the brake pedal.

CAUTION: Put lift table in brake mode when stationary in order to prevent sudden movement.

Lifting the Table

To lift the table, press the lifting pedal several times until the table reaches the desired height. The table lowers slightly after reaching the highest position. Maximum Capacity of this table is 1100 lbs. (500 kg).

WARNING: Do not overload lift table, stay within the rated capacity.

Do not load the table on sides or ends only. Load must be distributed on at least 80% of table area.

Lowering the Table

WARNING: DO NOT put foot or hand in scissor mechanism. The rotating knob lowers the table.

NOTE: The hydraulic cylinder is designed to hold table. As is the nature of the hydraulic system, table lowers very slowly over an extended period of time. Please note that the table does not stay at the same height indefinitely.

Specifications

Model	Capacity	Table	Table Height	Foot Pedal Strokes to Elevate	Wheel	Weight
MP008	500 kg. 1100 lbs.	500 x 815 mm 19.7" x 32.1"	280-900 mm 11" x 35.4"	≤ 45	127 mm 5"	85 kg. 187 lbs.

Service Instructions

Change hydraulic oil every 12 months

Lubricate the following areas every month: Fitting of Cylinder/oil, Roller Friction Surface/grease, Link Pin/oil, Pedal Fitting Point/oil, Grease Nipple/grease

Troubleshooting

If the table does not lift when pressing the lift pedal several times:
The pull rod is too loose and needs to be tightened.

- Using a wrench, loosen the nut holding the pull rod in place.
- With pliers, pull the end of the pull rod to tighten it, and then use a wrench to tighten the nut.

If the table does not lower:

The pull rod is too tight and needs to be loosened.

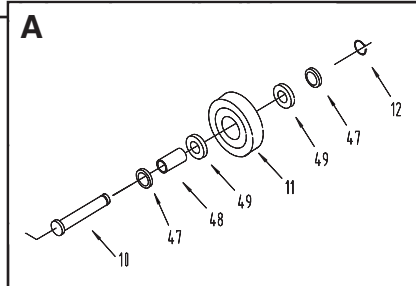
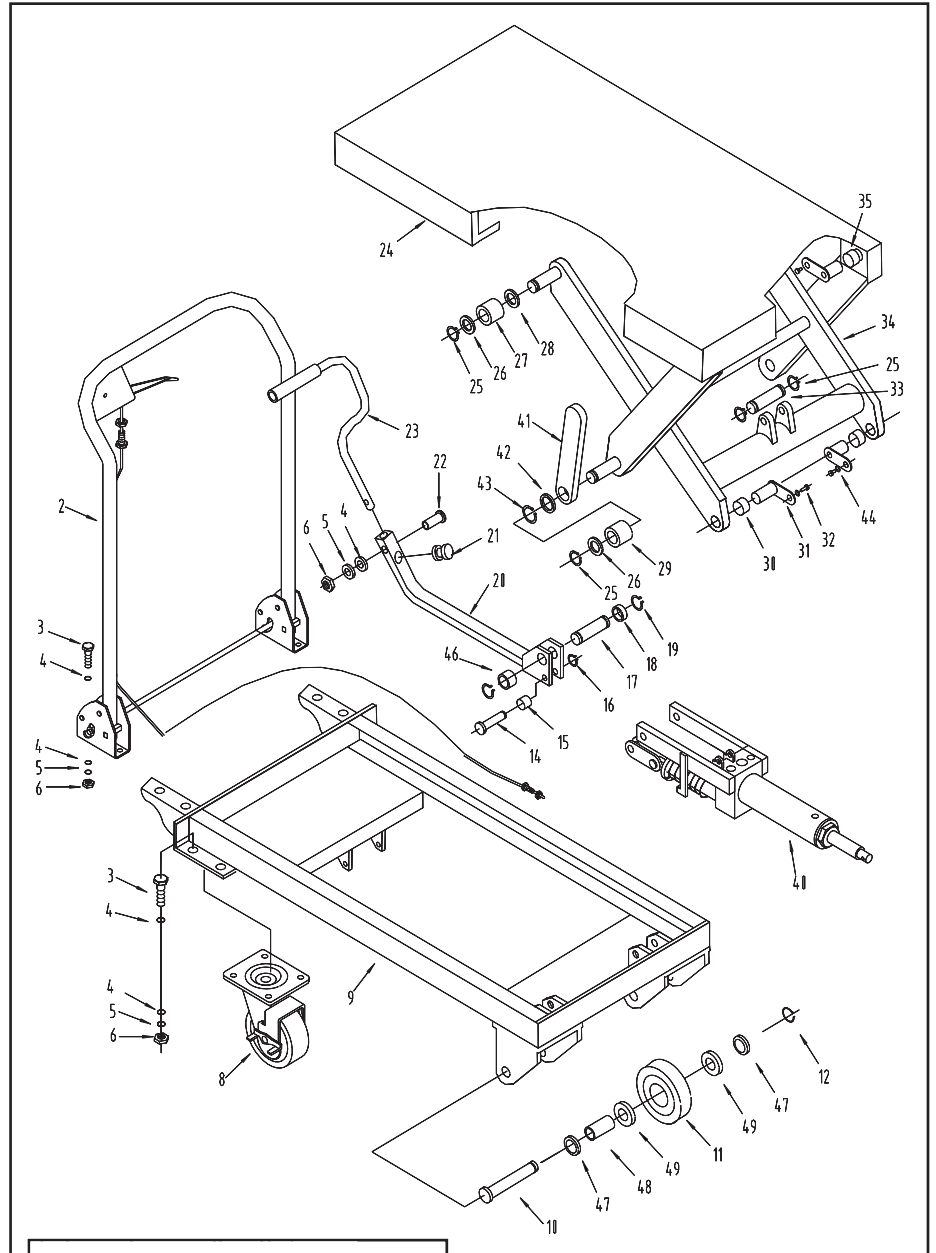
- Using a wrench, loosen the nut holding the pull rod in place.
- With pliers, push the pull rod from the end back to loosen it, then a wrench to tighten the nut.



LIFT TABLE PARTS LIST

Part No.	Model No.	Description	Qty.
2	SP11.1-00	Handle Bar	1
3	GB5781-2000	Bolt	12
4	GB95-1985	Washer	25
5	GB93-1987	Washer	13
6	GB41-86	Nut	13
8	MP021	Wheel	2
9	SPC.5-00	Frame	1
10	SP.0-08	Shaft	2
11	MP021	Wheel	2
12	GB894.1-86	Retaining ring	2
14	SP.0-11	Shaft	1
15	SP.0-12	Bush	1
16	GB894.1-86	Retaining ring	1
17	SPS.0-03	Shaft	1
18	YQ-7	Retaining ring	1
19	GB894.1-86	Retaining ring	2
20	SP.3.04B	Connecting rod	1
21	SP.3-03	Cushion	1
22	GB5781-2000	Bolt	1
23	SP.3-02	Pedal bar	1
24	SPC.7-00	Table	1

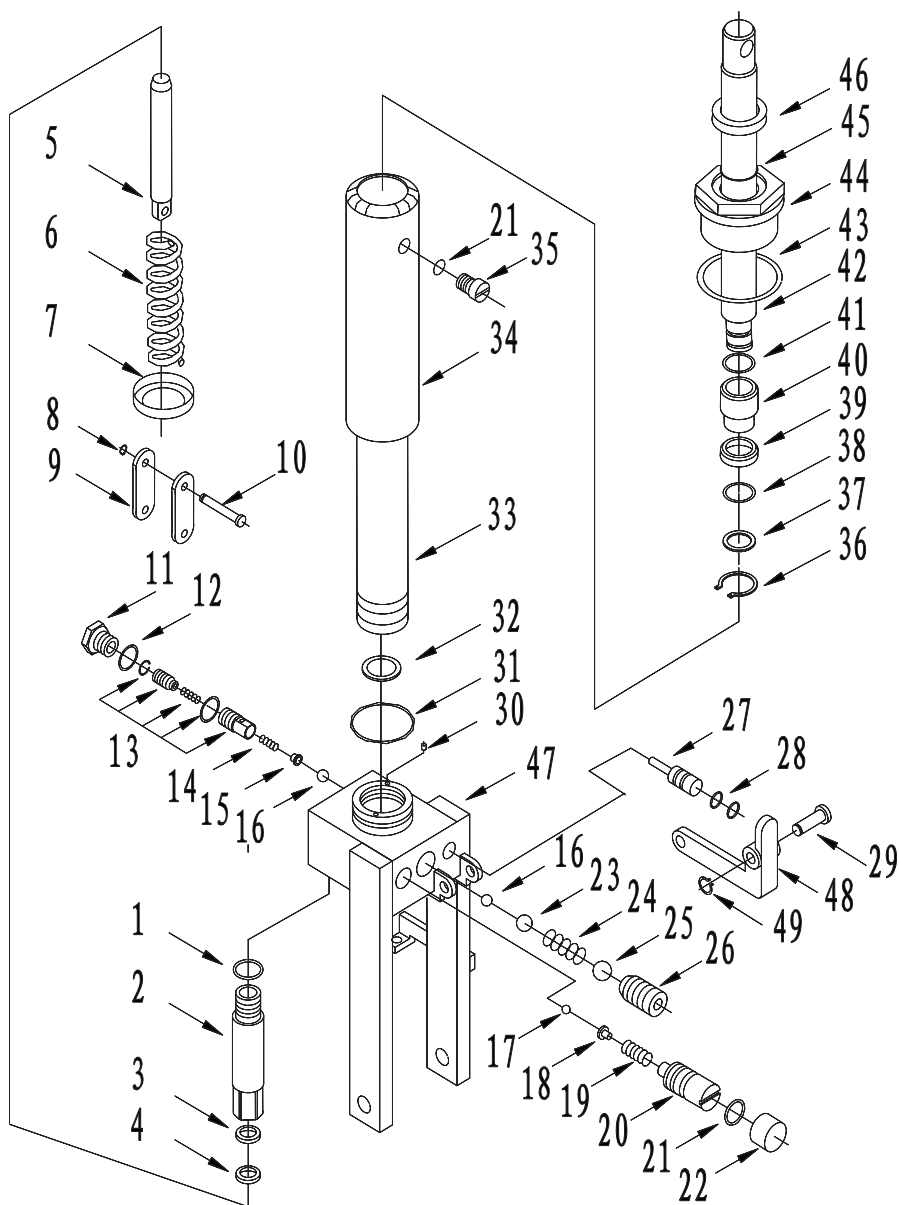
Part No.	Model No.	Description	Qty.
25	GB894.1-86	Retaining ring	6
26	GB848-1985	Washer	4
27	SP.6-12	Washer	2
28	SP.6-11	Washer	2
29	SP.6-10	Roller	2
30	SP.6-01	Bush	2
31	SP.0.02	L-pin	4
32	GB70-85	Bolt	4
33	SP.0-03	Shaft	1
34	SPC.6-00	Arm	1
35	SF-1.1612	Bush	2
40	MP028	Pump	1
41	SPC.6-07	Support	2
42	SPA.4-07	Washer	2
43	GB894.1-86	Retaining ring	2
44	GB93-1987	Washer	4
46	YQ-8	Retaining ring	1
47	SP.0-06	Bush	4
48	SP.0-07	Hollow shaft	2
49	GB276-86	Bearing	4
A	MP025	Wheel assembly	2



PUMP PARTS LIST

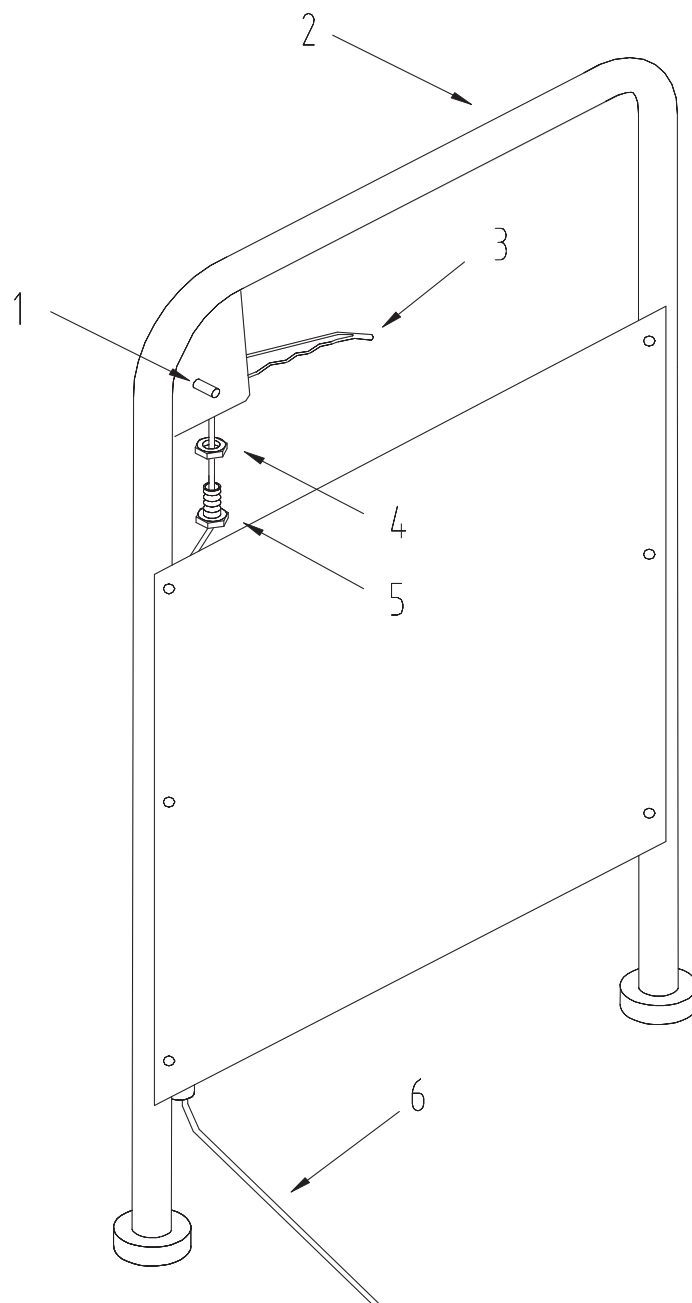
Part No.	Model No.	Description	Qty.
1	GB3452.1-86	O-ring	1
2	SP.8-11A	Pump cylinder	1
3	UHS14	YX-seal ring	1
4	DH14	Dust ring	1
5	SP.8-10A	Pump plunger	1
6	SP.8-09	Spring	1
7	SP.8-08	Spring seat	1
8	GB894.1-86	Retaining ring	1
9	SP.0-13B	Joint plate	2
10	SP.0-14	Pin	1
11	JF.1-17	Screw	1
12	JB982-77	Copper washer	1
13	6W804.1-12	Damp valve	1
14	YQ-03	Spring	1
15	YQ-02	Spring seat	1
16	GB308-77	Steel Ball	2
17	GB308-77	Steel ball	1
18	SP.8-18	Spring seat	1
19	SP.8-17	Spring	1
20	SP.8-16	Adjusting screw	1

Part No.	Model No.	Description	Qty.
21	GB3452.1-86	O-ring	2
22	SP.8-15	Cover ring	1
23	GB308-77	Steel ball	1
24	SP.8-07	Spring	1
25	GB308-77	Steel ball	1
26	GB77-85	Screw	1
27	YQ-01	Strike pin	1
28	GB3452.1-82	O-ring	2
29	DF1.2-08	Shaft	1
30		Filter	1
31	GB3452.1-82	O-ring	1
32	SP.8-12	Rectangular ring section	1
33	SP.8-04	Cylinder	1
34	SP.8-03	Housing	1
35	SP.8-02	Screw	1
36	GB894.1-86	Retaining ring	1
37	SP.8-13	Washer	1
38	GB3452.1-82	O-ring	1
39	SP.8-14	Cup packing	1
40	SP.8-06	Bush	1



Part No.	Model No.	Description	Qty.
41	GB3452.1-82	O-ring	1
42	SP.8-05	Piston rod	1
43	C01.2-16	Rectangular section sealing	1
44	SP.8-01	Cylinder cap	1
45	GB3452.1-82	O-ring	1
46	HG4-692-67	J shaped steel frame rubber sealing	1
47	YQ.6-300	Base	1
48	YQ-04	Lever plate	1
49	GB894.1-86	Retaining ring	1

HANDLE PARTS LIST



Part No.	Model No.	Description	Qty.
1	GB879-86	Spring pin	1
2	SPAIII.1.01	Handle Bar	1
3	MP015	Knob	1
4	GB6172-86	Nut	1
5	SPIII.0-01	Screw	1
6	MP017	Pull rod	1
