

**INSTRUCTION MANUAL**  
**Model No. MN705**  
**DIGITAL SCALE HYDRAULIC PALLET TRUCK**

**KLETON**



## WARNING!

- Read and understand the entire operator's manual before using the pallet truck.
- Don't load pallet truck beyond rated capacity of 4,400 lbs.
- Secure load before transporting.
- Keep the load centered on the pallet.
- Don't operate loaded pallet truck on ramps or inclines.
- Always wear appropriate safety shoes.
- Never leave a loaded pallet truck unattended in the raised position; always lower load to the floor.

## PALLET TRUCK ASSEMBLY

**Note:** Individual trucks are assembled and ready to use. Pallet trucks purchased in crate quantities (6 units to a crate) require some assembly.

**Tools needed for assembly:** hammer, flat screwdriver, 14mm wrench

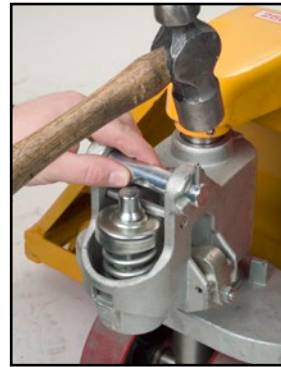
### TO ATTACH HANDLE ASSEMBLY TO THE FRAME:



**1.**

**\*\*\* IMPORTANT - SAFETY \*\*\***

Verify that spring safety pin is in place. The pin should be well rested in the holes situated on each side of the pump housing. If the safety pin is not rested properly in one of the holes, put pressure on the spring using a "C" clamp pushing down on the pump stem. Once pressure is relieved on the pin, reinsert properly and remove clamp slowly,



**2.**

Insert handle pin into corresponding holes and using a hammer, drive in one spring pin on one side only.



**3.**

Insert handle pin without the handle and verify that the center hole is facing you.

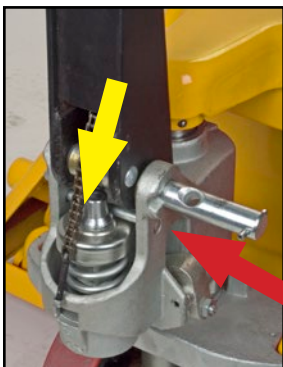


**4.**

If handle pin's center hole is facing away from you, insert pin from other side.

**\*\*\* IMPORTANT - FACT \*\*\***

The up/down lever's chain passes through this center hole. If left this way, the chain will have an "S" form and be under too much tension, making the up/down lever difficult to use accurately.



**5.**

**\*\*\* IMPORTANT - CHAIN\*\*\***

Before this step, make sure to feed the chain on the outside of the piston stem roller (see yellow arrow). If left in its proper position, it will not be possible to insert the handle pin and chain, breakage may occur.

Align handle holes with pump housing holes and push through handle pin (see red arrow)



**6.**

Make sure that handle pin is completely through the handle and resting on the other side.



**7.**

Pull down on the handle to release the tension on the safety pin. CAREFULLY remove the safety pin.



**8.**

Feed the chain and nut first back inside the handle THROUGH the handle pin's center hole.

**\*\*\*IMPORTANT - TIP \*\*\***

Release the up/down lever to its lowest position to make the process easier.



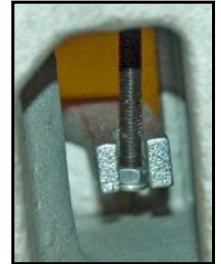
**9.**

Once the chain is in the proper position, check to see that it moves freely and that it is not obstructed.



**10.**

Using both hands, push on the valve cam to raise the hook inside the housing and feed the end of the chain in the cam. (see image at right)



**11.**

Pump the lever a few times to raise the forks. Put the up/down lever to its NEUTRAL position. Using a 14mm wrench and a flat screwdriver, adjust the valve cam so that the forks don't lower or rise (if handle is pumped) at this position.



**12.**

**\*\*\* IMPORTANT - FINAL CHECK \*\*\***

Test all the features of the pallet truck before this step. The handle should be pumped with full strokes to prime and eliminate air in the system. The up/down lever should be checked at the handle's lowest position for this puts the most tension on the chain. Once the pallet truck is adjusted properly and is performing well, drive in the second spring pin using a hammer.

## TO ATTACH THE DIGITAL DISPLAY BOX TO THE FRAME



**1.**

Using a 5 mm hex key, remove the three bolts on the base of the pallet truck



**2.**

Feed the plug through the base of the display box.



**3.**  
Align the display box with the holes on the base. Screw in the bolts to secure the two parts.



**4.**  
Connect the two plugs.



**5.**  
Using the screwdriver provided with the pallet truck, tighten the screws on either side of the plugs.



**6.**  
Gently push and slide the battery cover to open it. To connect the battery, plug the connector into the socket to the right of the battery pack.



**7.**  
Turn on to test the scale.

## OPERATING PALLET TRUCK

To raise the forks, place handle lever in UP position (bottom part of the handle slot).  
**SEE FIGURE 2.**



**DOWN**



**NEUTRAL**

**UP**

FIGURE 2.



To lower forks, pull lever to DOWN position (upper part of the slot).  
 To freely move the handle, set the lever in NEUTRAL (center notch of the slot).

**TO LIFT A LOAD:**

1. Lower forks to lowest position.
2. Insert forks under load or into pallet.
3. Place lever in UP position (bottom part of the slot).
4. Move handles up and down until forks reach desired height.

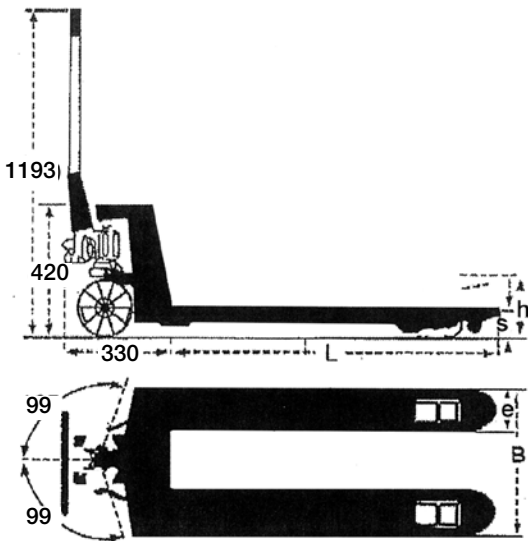
**TO MOVE A LOAD:**

1. Place lever in NEUTRAL position (center notch of the slot).
2. Pull or push to desired location.

**TO LOWER A LOAD:**

1. Pull lever to the DOWN position (upper part of the slot).
2. Pull forks away from load.

**TECHNICAL PARAMETERS**



<b>Model No.</b>	<b>MN705</b>
<b>Capacity</b>	4400 lbs
	1995 kg
<b>H - Maximum Raised Height</b>	7 11/16"
	195 mm
<b>S - Lowered Height</b>	3"
	75 mm
<b>L - Fork Length</b>	44 1/2"
	1130 mm
<b>E - Fork Width</b>	6 3/4"
	170 mm
<b>B - Fork Outside Distance</b>	27"
	685 mm
<b>Dimensions of the steer wheel</b>	6" x 2"
	152 mm x 50 mm
<b>Dimensions of the load wheel</b>	2 3/4" x 3 1/8"
	70 mm x 80 mm

**MAINTENANCE**

**LUBRICATION**

Your KLETON pallet truck is equipped with grease fittings in order to facilitate greasing its bearings.

It is recommended to apply grease every 6 months.

Adding Oil (if required)

1. Lower the pallet truck forks to their lowest point using the up/down lever on the handle. You will notice that the piston is now completely inside the pump assembly.
2. Remove the oil reservoir plug (part #20 of the pump assembly).
3. Using an oil can, add the hydraulic oil. The oil level should be up to the bottom of the hydraulic oil reservoir's fill hole.
4. Re-insert the oil reservoir plug (part #20 of the pump assembly).
5. Pull the lever on the handle upwards to put it in the DOWN position (see page 3 for details).

Then, pump the handle up and down a minimum of 10 times in order to remove any air bubbles in the system.

**Note:** Unless the pump is leaking, you should not have to add any additional oil. Please contact your KLETON distributor if your pallet truck is leaking.

# TROUBLESHOOTING

Possible problems could arise in the operation of your hydraulic pallet truck. Their probable cause(s) and corrective action(s) follow:

Condition	Probable Causes	Corrective Action
Hydraulic unit does not lift	Oil low in tank	Make sure there is no till leakage from valve and add oil.
	Relief valve not seated properly or air in the system	See "Cleaning Relief Valve" in this manual.
	Defective pressure seal in main cylinder	Consult authorized service centre.
	Relief valve not adjusted properly	Adjust valve by pressure adjustment screw
Once lifted truck lowers by itself	Relief valve not seated properly	See "Cleaning Relief Valve" in this manual.
	Defective pressure seal in main cylinder	Consult authorized service centre
	Relief valve not adjusted properly	Adjust valve by pressure adjustment screw
	Oil leakage	Consult authorized service centre
Fork does not lower	Cam chain broken	Replace cam chain.
	UP-DOWN cam nut out of adjustment	Refer to "Adjusting UP-DOWN Cam" in this manual.
	Broken fork rods and linkage	Consult authorized service centre
	Cam chain lock-nut fallen off	Replace cam chain lock-nut
Lever does not set at NEUTRAL position	Relief valve not adjusted properly	Adjust valve by pressure adjustment screw

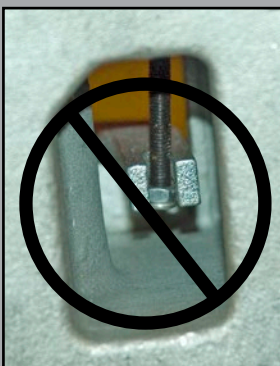
## CLEANING RELIEF VALVE

Over time, relief valve may become clogged with debris and will not work properly.

To clean relief valve, flush the hydraulic system as follows:

Hold the UP/DOWN lever to the DOWN position and move the handles up and down several times.

## ADJUSTING UP-DOWN CAM



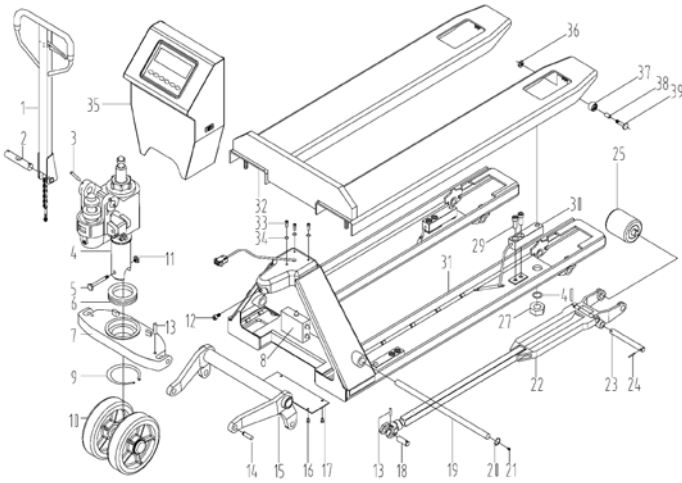
**DO NOT** adjust the up/down lever control using the lock nut at the end of the handle chain. If nylon locking threads are removed from the screw threads, rolling vibration will cause the nut to unscrew and fall off, leaving the up/down lever unusable.



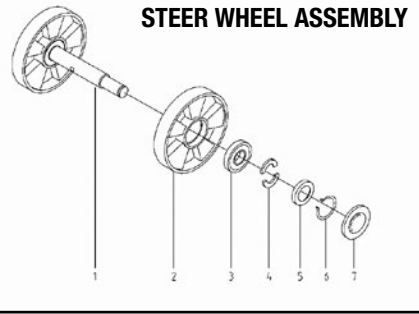
Use proper set screw and lock nut adjustment located on the side of the pump. This feature was designed to ease the pallet truck adjustment. Tools required are: flat screwdriver and a 14mm wrench.

# HYDRAULIC HAND PALLET TRUCK ASSEMBLY AND PARTS LISTS

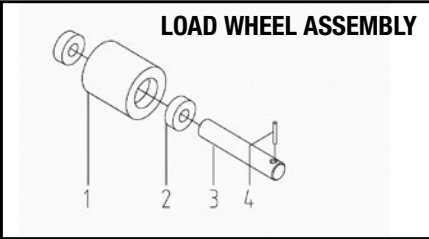
## GENERAL ASSEMBLY



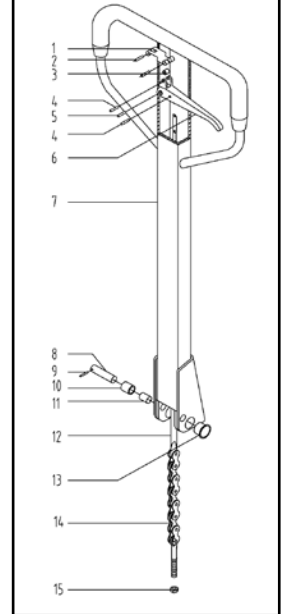
## STEER WHEEL ASSEMBLY



## LOAD WHEEL ASSEMBLY



## HANDLE ASSEMBLY



No.	Order No.	Description	Qty
1		HANDLE	1
2	MN302	PRESSURE SHAFT	1
3		SPRING PIN	2
4		PUMP	1
5		BOLT	1
6		BEARING	1
7		SUPPORT BASE	1
8		LINE BOX	1
9		RETAINING RING FOR AXLE	1
10		STEER WHEEL ASSEMBLY	1
11		NUT	1
12		BOLT	1
13		SPRING PIN	4
14		PIN	2
15		ROCKER ARM	1
16		BOLT	4
17		COVER	1
18		PIN	2
19		LONG SHAFT	1
20		RETAINING RING FOR HOLE	2
21		OILER	2
22		PUSH ROD SYSTEM	2
23		SHAFT	2
24		SPRING PIN	4
25		LOAD WHEEL ASSEMBLY	2
27		NUT	4
29		BOLT	4
30		SENSOR	4
31		FORK FRAME	1
32		SCALE PAN	1
33		BOLT	3
34		SPRING WASHER	3
35		DIGITAL DISPLAY BOX	1
36		NUT	2
37	MN305	ENTRY ROLLER	2
38		TUBE	2
39		BOLT	2
40		RUBBER WASHER	4

## STEER WHEEL ASSEMBLY

No.	Order No.	Description	Qty
1		SHAFT	1
2	MN334	STEER WHEEL	2
3		BEARING	4
4		HALF RING	4
5		WASHER	2
6		RETAINING RING FOR AXLE	2
7	MN120	DUST CAP	2

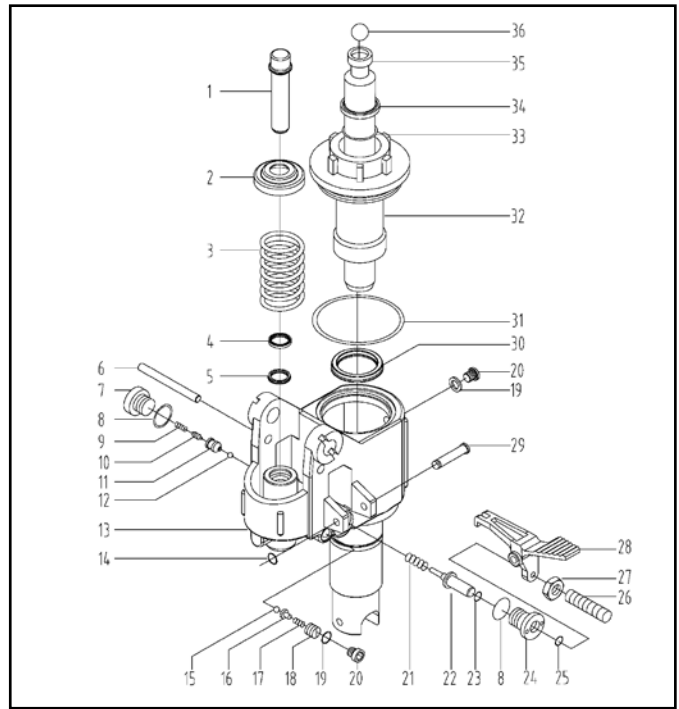
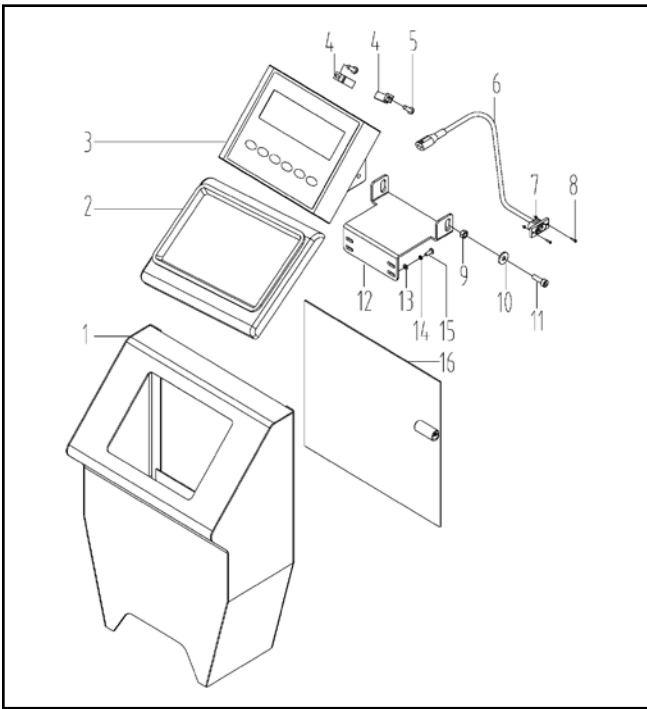
## LOAD WHEEL ASSEMBLY

No.	Order No.	Description	Qty
1	MN359	LOAD WHEEL	1
2		BEARING	2
3		SHAFT	4
4		SPRING PIN	4

## HANDLE ASSEMBLY

No.	Order No.	Description	Qty
	MN321	HANDLE ASSEMBLY	1
1	MJ554	CONTROL LEVEL SPRING	1
2		SPRING PIN	2
3	MN242	HANDLE ROLLER	1
4		SPRING PIN	2
5		SPRING PIN	1
6	MN241	CONTROL LEVER	1
7		HANDLE TUBE	1
8		SHAFT	1
9		SPRING PIN	1
10		PRESSURE ROLLER	1
11		BUSH	1
12		PULLING ROD	1
13		BUSH	2
14	MJ561	CHAIN	1
15	MJ613	NUT	1

# DIGITAL DISPLAY & PUMP ASSEMBLY



## DIGITAL DISPLAY BOX ASSEMBLY

No.	Order No.	Description	Qty
1	MO271	DISPLAY FRAME	1
2	MO798	RUBBER RING	1
3		DIGITAL DISPLAY	1
4		CLAMP	4
5		BOLT	4
6	MO788	POWER CORD	1
7		NUT	2
8		BOLT	2
9		NUT	2
10		WASHER	2
11		BOLT	2
12		CLAMP BOARD	1
13		WASHER	4
14		SPRING WASHER	4
15		BOLT	4
16	MN360	DOOR	1

## PUMP ASSEMBLY

No.	Order No.	Description	Qty
	MN603	PUMP ASSEMBLY	1
1		PUMP PLUNGER	1
2		SPRING CAP	1
3		SPRING	1
4		DUST RING	1
5		Y-RING	1
6		PIN	1
7		PLUG	1
8		COPPER WASHER	1
9		SPRING	2
10		SPINDLE OF DAMPING VALVE	1
11		SEAT OF DAMPING VALVE	1
12		STEEL BALL	1
13		BASE	1
14		RETAINING RING FOR AXLE	1
15		STEEL BALL	1
16		BALL BASE	1
17		SPRING	1
18		BOLT	1
19		COPPER WASHER	2
20		BOLT	2
21		SPRING	1
22		STRIKE PIN	1
23		O-RING	1
24		COPPER WASHER	1
25		O-RING	1
26		BOLT	1
27		NUT	1
28		LEVER PLATE	1
29		PIN	1
30		Y-RING	1
31		O-RING	1
32		CYLINDER CAP	1
33		O-RING	1
34		DUST RING	1
35		PISTON ROD	1
36	MJ571	STEEL BALL	1