
Instruction Manual
ML994
Super Heavy-Duty Hydraulic
Hand Pallet Truck



KLETON

WARNING!

- Read and understand the entire operator's manual before using the pallet truck.
 - Don't load pallet truck beyond rated capacity of 11,000 lbs.
 - Secure load before transporting.
 - Keep the load centered on the pallet.
 - Don't operate loaded pallet truck on ramps or inclines.
 - Always wear appropriate safety shoes.
 - Never leave a loaded pallet truck unattended in the raised position; always lower load to the floor.
-

PALLET TRUCK ASSEMBLY

Note: Individual trucks are assembled and ready to use. Pallet trucks purchased in crate quantities (6 units to a crate) require some assembly.

Tools needed for assembly: hammer, flat screwdriver, 14mm wrench, 3/16" pin punch

To attach handle assembly to the frame:



1.

***** IMPORTANT - SAFETY *****

Verify that spring safety pin is in place. The pin should be well rested in the holes situated on each side of the pump housing. If the safety pin is not rested properly in one of the holes, put pressure on the spring using a "C" clamp pushing down on the pump stem. Once pressure is relieved on the pin, reinsert properly and remove clamp slowly,



2.

Using a hammer and punch, remove the spring pin.



3.

Remove the handle pin as shown.



4.

***** IMPORTANT - CHAIN******

Before this step, make sure to feed the chain on the outside of the piston stem roller (see yellow arrow). If left in its proper position, it will not be possible to insert the handle pin and chain, breakage may occur. Align handle holes with pump housing holes and push through handle pin (see red arrow)



5.

Make sure that handle pin is completely through the handle and resting on the other side.



6.

Drive in the spring pin using a hammer.



7.

Pull down on the handle to release the tension on the safety pin. CAREFULLY remove the safety pin.



8.

Feed the chain and nut first back inside the handle THROUGH the handle pin's center hole.

*****IMPORTANT - TIP *****

Release the up/down lever to its lowest position to make the process easier.



9.

Once the chain is in the proper position, check to see that it moves freely and that it is not obstructed.



10.

Feed the end of the chain into the cam.



11.

Pump the lever a few times to raise the forks. Put the up/down lever to its NEUTRAL position. Using a 14mm wrench and a flat screwdriver, adjust the valve cam so that the forks don't lower or rise (if handle is pumped) at this position.

12.

***** IMPORTANT - FINAL CHECK *****

The handle should be pumped with full strokes to prime and eliminate air in the system. The up/down lever should be checked at the handle's lowest position as this puts the most tension on the chain.

OPERATING PALLET TRUCK

To raise the forks, place handle lever in UP position (bottom part of the handle slot).
See Figure 2.

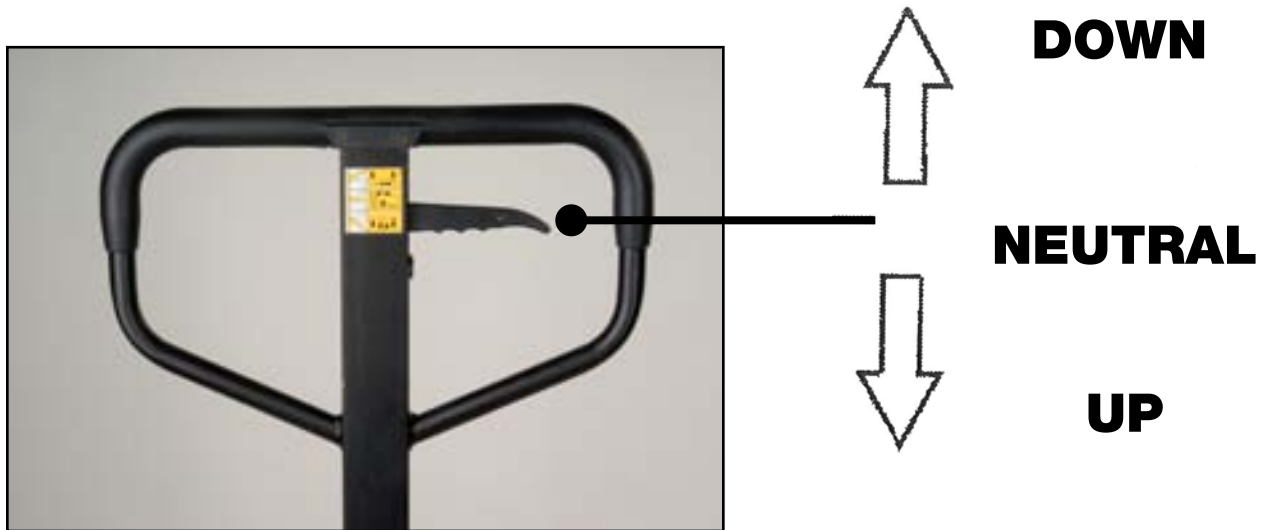


Figure 2

To lower forks, pull lever to DOWN position (upper part of the slot).
To freely move the handle, set the lever in NEUTRAL (center notch of the slot).

To lift a load:

1. Lower forks to lowest position.
2. Insert forks under load or into pallet.
3. Place lever in UP position (bottom part of the slot).
4. Move handles up and down until forks reach desired height.

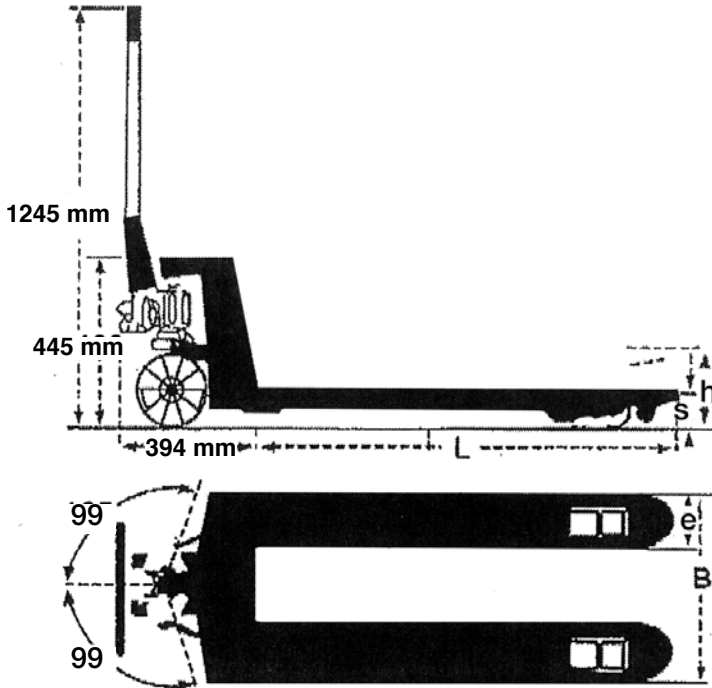
To move a load:

1. Place lever in NEUTRAL position (center notch of the slot).
2. Pull or push to desired location.

To lower a load:

1. Pull lever to the DOWN position (upper part of the slot).
 2. Pull forks away from load.
-

TECHNICAL PARAMETERS



Model No.	ML994
Capacity	11000 lbs.
	5000 kg
H - Maximum Raised Height	7 3/8"
	187 mm
S - Lowered Height	3"
	75 mm
L - Fork Length	48"
	1220 mm
E - Fork Width	6 1/4"
	160 mm
B - Fork Outside Distance	27"
	685 mm
Diameter of the steer wheel	7" x 2"
	180 mm x 50 mm
Dimensions of the load wheel	3" x 3"
	76 mm x 76 mm

MAINTENANCE

Lubrication

Your KLETON pallet truck is equipped with grease fittings in order to facilitate greasing its bearings. It is recommended to apply grease every 6 months.

Adding Oil (if required)

1. Lower the pallet truck forks to their lowest point using the up/down lever on the handle. You will notice that the piston is now completely inside the pump assembly.
2. Remove the oil reservoir plug (part #328).
3. Using an oil can, add the hydraulic oil. The oil level should be up to the bottom of the hydraulic oil reservoir's fill hole.
4. Re-insert the oil reservoir plug (part #328).
5. Pull the lever on the handle upwards to put it in the DOWN position (see page 3 for details). Then, pump the handle up and down a minimum of 10 times in order to remove any air bubbles in the system.

Note: Unless the pump is leaking, you should not have to add any additional oil. Please contact your KLETON distributor if your pallet truck is leaking.

TROUBLESHOOTING

Possible problems could arise in the operation of your hydraulic pallet truck. Their probable cause(s) and corrective action(s) follow:

Condition	Probable Causes	Corrective Action
Hydraulic unit does not lift	Oil low in tank	Make sure there is no till leakage from valve and add oil.
	Relief valve not seated properly or air in the system	See "Cleaning Relief Valve" in this manual.
	Defective pressure seal in main cylinder	Consult authorized service centre.
	Relief valve not adjusted properly	Adjust valve by pressure adjustment screw
Once lifted truck lowers by itself	Relief valve not seated properly	See "Cleaning Relief Valve" in this manual.
	Defective pressure seal in main cylinder	Consult authorized service centre
	Relief valve not adjusted properly	Adjust valve by pressure adjustment screw
	Oil leakage	Consult authorized service centre
Fork does not lower	Cam chain broken	Replace cam chain.
	UP-DOWN cam nut out of adjustment	Refer to "Adjusting UP-DOWN Cam" in this manual.
	Broken fork rods and linkage	Consult authorized service centre
	Cam chain lock-nut fallen off	Replace cam chain lock-nut
Lever does not set at NEUTRAL position	Relief valve not adjusted properly	Adjust valve by pressure adjustment screw

Cleaning Relief Valve

Over time, relief valve may become clogged with debris and will not work properly.

To clean relief valve, flush the hydraulic system as follows:

Hold the UP/DOWN lever to the DOWN position and move the handles up and down several times.

Adjusting UP-DOWN Cam



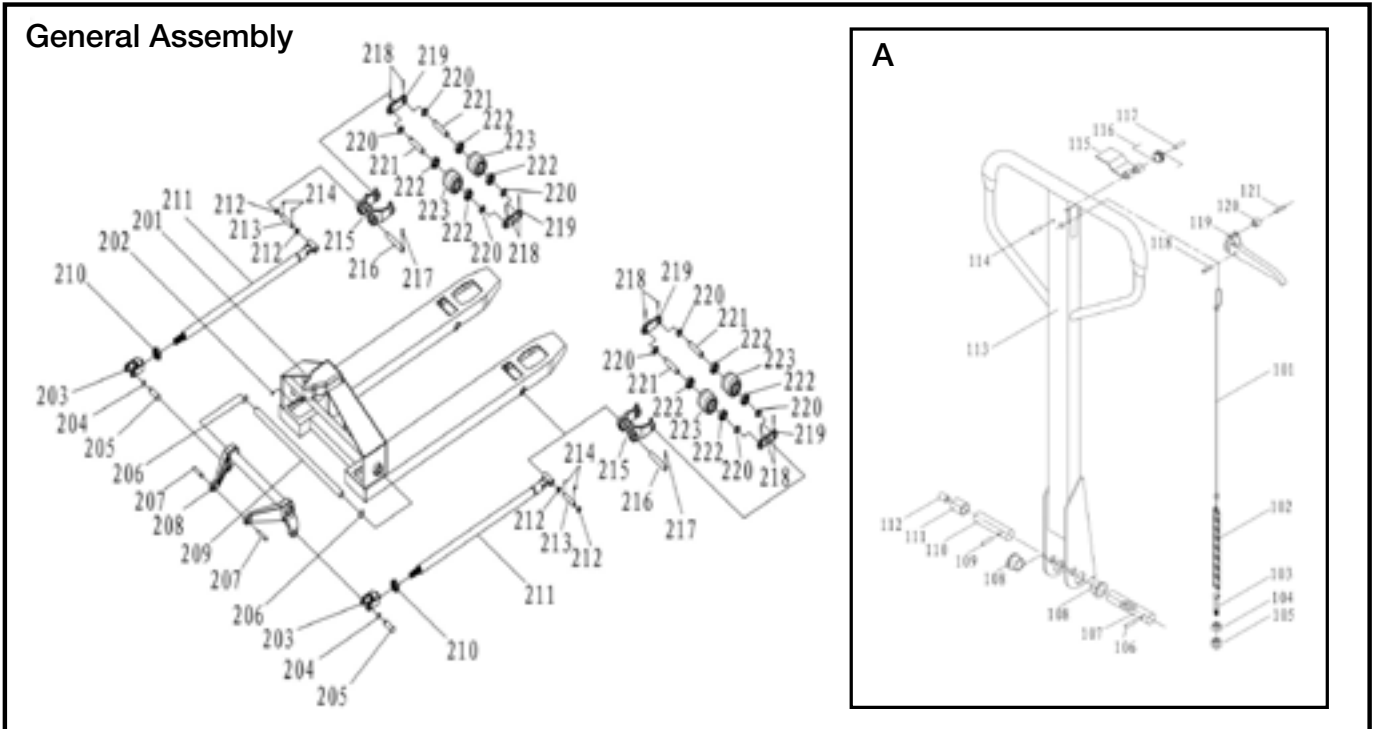
DO NOT adjust the up/down lever control using the lock nut at the end of the handle chain. If nylon locking threads are removed from the screw threads, rolling vibration will cause the nut to unscrew and fall off, leaving the up/down lever unusable.



Use proper set screw and lock nut adjustment located on the side of the pump. This feature was designed to ease the pallet truck adjustment. Tools required are: flat screwdriver and a 14mm wrench.

HYDRAULIC HAND PALLET TRUCK ASSEMBLY AND PARTS LISTS

General Assembly



General Assembly

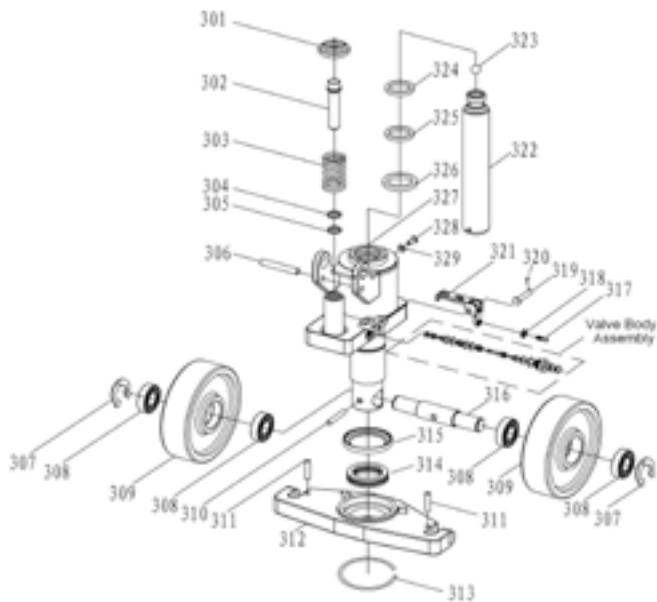
No.	Order No.	Description	Qty
201		BODY WELDMENT	1
202		ADJUSTMENT SCREW	1
203		CONNECTING FORK EAR	2
204		CIRCLIP FOR SHAFT	2
205		CONNECTING SHAFT	2
206		CIRCLIP FOR HOLE	2
207		CONNECTING SHAFT FOR BACKING PLATE	2
208		LEVER BRACKET	1
209		LEVER BRACKET SHAFT	1
210		ADJUSTING NUT	2
211		PUSH ROD (1220/1150MM)	2
212		FLAT WASHER	4
213		PUSH ROD CONNECTING SHAFT	2
214		SPLIT PIN	4
215		LOAD WHEEL FRAME	2
216		LOCATING SHAFT OF LOAD WHEEL FRAME	2
217		ELASTIC CYLINDRICAL PIN	2
218		ELASTIC CYLINDRICAL PIN	8
219		SIDE PLATE(DOUBLE WHEEL)	4
220		FLAT WASHER	8
221		LOAD WHEEL SHAFT	4
222		BEARING	8
223	MN240	LOAD WHEEL	4

Handle Assembly

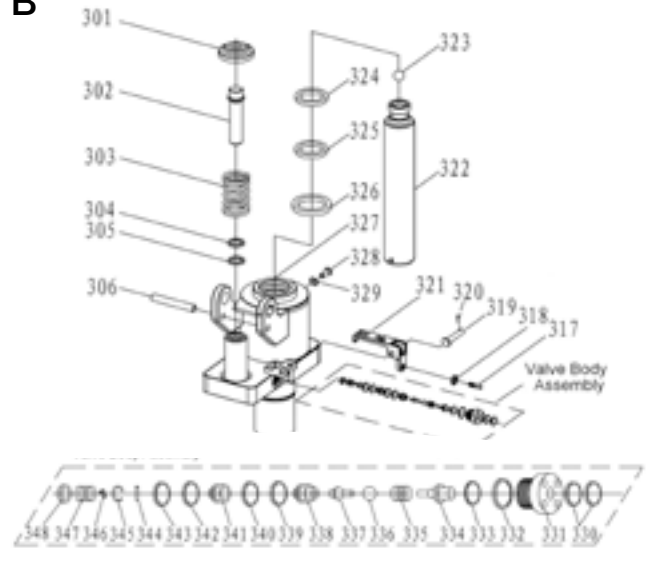
No.	Order No.	Description	Qty
101	MN369	PULLING ROD	1
102		CHAIN 04B-1-121	1
103		DROP BOLT M5X30	1
104		HEXAGONAL NUT M5	1
105		LOCK NUT M5	1
106		ELASTIC CYLINDRICAL PIN 5x35	1
107		HANDLE LOCATING SHAFT	1
108		SPACER BUSH 2023165	2
109		ELASTIC CYLINDRICAL PIN 4X20	1
110		ROLLER SHAFT	1
111		ROLLER	1
112		ROLLER BUSH	1
113		HANDLE WELDMENT	1
114		ELASTIC CYLINDRICAL PIN 6X30	1
115		LOCATING SPRING STRIP	1
116		HANDLE SPRING	1
117		ELASTIC CYLINDRICAL PIN 4X30	1
118		ELASTIC CYLINDRICAL PIN 4x10	1
119		CONTROL HANDLE	1
120		ROLLER HANDLE	1
121		ELASTIC CYLINDRICAL PIN 4X16	1
A	MN525	HANDLE ASSEMBLY	

PUMP ASSEMBLY AND PARTS LISTS

General Assembly:



B



C



No.	Order No.	Description	Qty
301		SPRING GLAND	1
302		PUMP PLUNGER	1
303		SPRING	1
304		ANTI-DUST RING	1
305		SEALING RING	1
306		GAG LEVER POST	1
307	MN527	HALF RING	2
308	MN528	BEARING 6205	4
309	MN523	STEER WHEEL	2
310		ELASTIC PIN 8*50	1
311		ELASTIC PIN 5*30	2
312		RETAINING PLATE	1
313		CIRCLIP FOR SHAFT 55	1
314		BEARING 51111	1
315		WASHER	1
316		STEER WHEEL SHAFT	1
317		HOLDING SCREW	1
318		HEX NUT	1
319		SHAFT PIN	1
320		SPLIT PIN	1
321		FOOT CONTROL ARM	1
322		PISTON ROD	1
323		STEEL BALL	1
324		DUST RING	1
325		O RING	1

No.	Order No.	Description	Qty
326		SEALING RING	1
327		PUMP WELDMENT	1
328		OIL FIL PLUG	1
329		BONDED SEAL	1
330		O RING	1
331		COPPER NUT	1
332		O RING	1
333		O RING	1
334		ROD	1
335		SPRING	1
336		STEEL BALL	1
337		HIGH PRESSURE VALVE CORE	1
338		CONNECTING SHAFT	1
339		NOTCHED RING	1
340		O-RING	1
341		HIGH PRESSURE VALVE BODY	1
342		NOTCHED RING	1
343		O-RING	1
344		ELASTIC CYLINDRICAL PIN	1
345		LEAF SPRING	1
346		CROSS RECESS HEAD SCREW	1
347		HIGH PRESSURE VALVE CORE SPRING	1
348		SPRING GLAND	1
B	MN524	PUMP ASSEMBLY	1
C	MN652	CONTROL VALVE ASSEMBLY	1