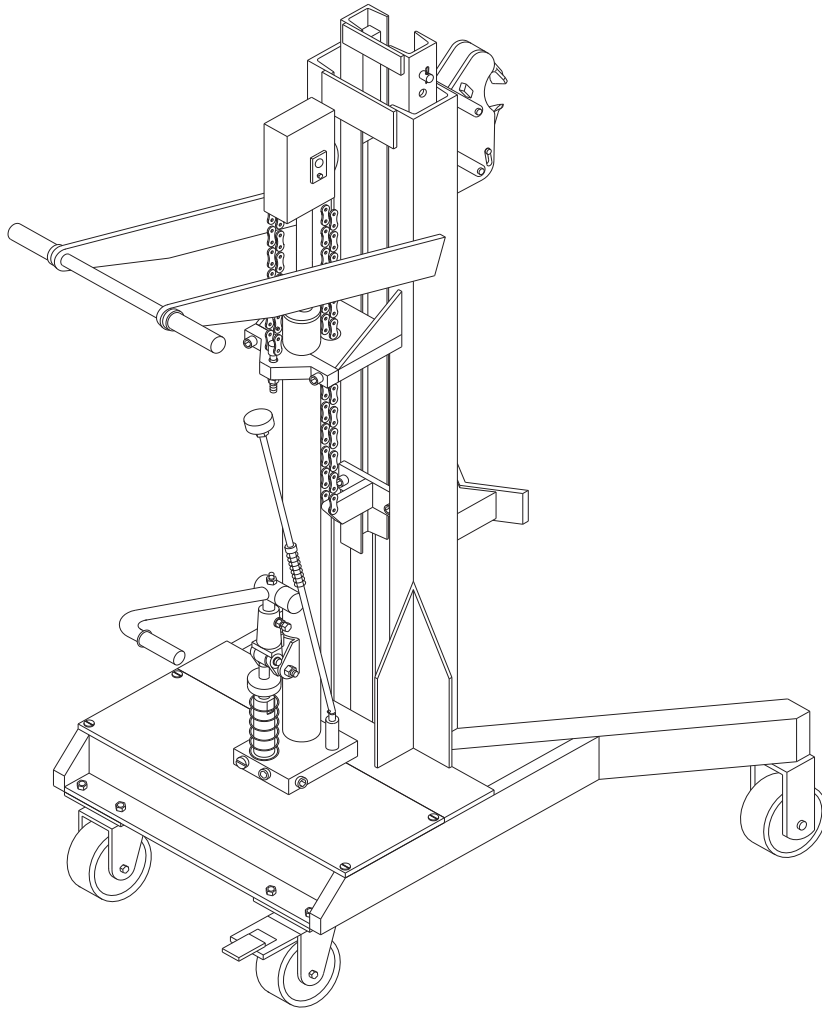




ERGONOMIC DRUM HANDLER
MODEL: DC875
INSTRUCTION MANUAL



Note: The Owner/Operator must carefully read and fully understand all information provided before operating.

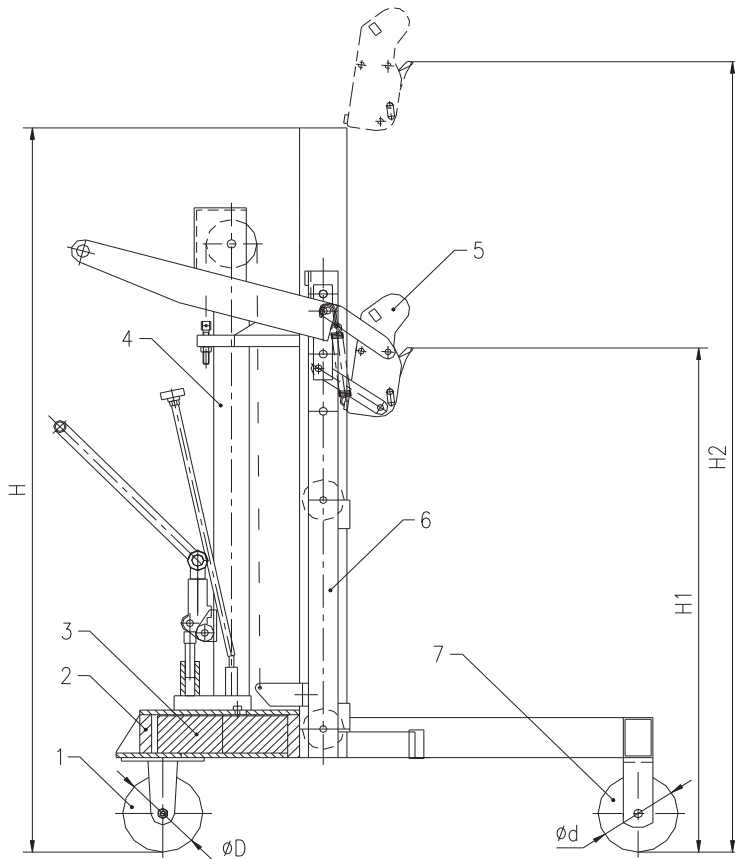
CONTENT

1. Figure and Parameter	2
1.1 Figure.....	2
1.2 Part Name	2
1.3 Technical Parameters	2
2. Warning	3
3. Operation	3
3.1 Lifting the drum.....	3
3.2 Transporting the drum	3
3.3 Lowering the drum.....	3
4. Hydraulic Circuit Diagram	4
5. Exploded View & Parts List.....	5-7

Please read these instructions carefully before use.

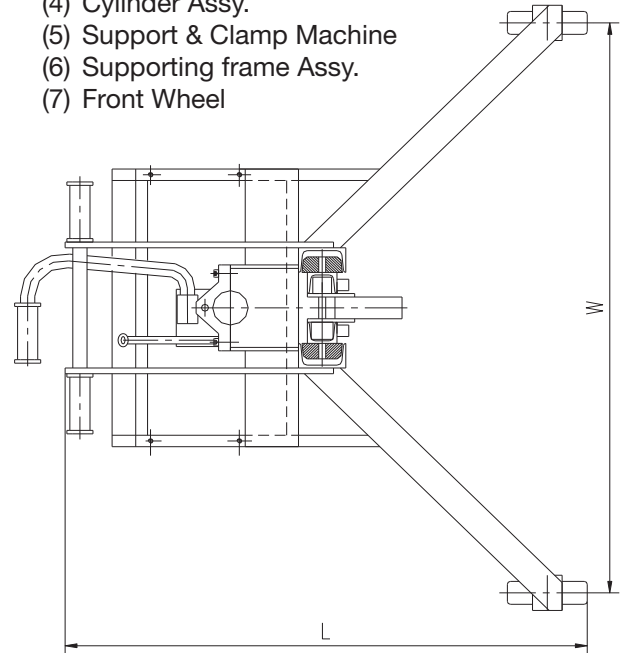
1. FIGURE AND PARAMETER

1.1 Figure



1.2 Part Name

- (1) Rear Wheel
- (2) Base Track Assy.
- (3) Block
- (4) Cylinder Assy.
- (5) Support & Clamp Machine
- (6) Supporting frame Assy.
- (7) Front Wheel



1.3 Technical Parameters

DC875		
Lifting Capacity		450 kg (992 lbs.)
Lifting Height		500 mm (20")
Front wheel Dia.		125 mm (5")
Rear wheel Dia.		125 mm (5")
Length	L	900 mm (35 1/2")
Height	H	1250 mm (49")
	H1	880 mm (31 1/2")
	H2	1380 mm (54")
Width	W	1020 mm (40")
Lifting per stroke		11.6 mm (1/2")
Drum size		572mm (22.5" Diameter), 210 Liters (55 gallon)
Net weight		165 kg (364 lbs.)

2. WARNING

- 1 Never overload this truck beyond its rated capacity.
- 2 Place the drum hook in the lowest position when not in use.
- 3 When transporting the drum, lift it just slightly off the ground.

3. OPERATION

3.1 Lifting the drum

Position the drum handler in front of the drum, aligning the support & clamp mechanism (5) with the drum. Engage the rear wheel brake (1) to secure the handler.

Press the pedal lever to lower the upper hook of the support & clamp mechanism (5), allowing it to grip the drum. Continue pressing the pedal to lift the drum.

3.2 Transporting the drum

After raising the drum, release the brake and push the handle of the base track frame assembly (2) to move the drum.

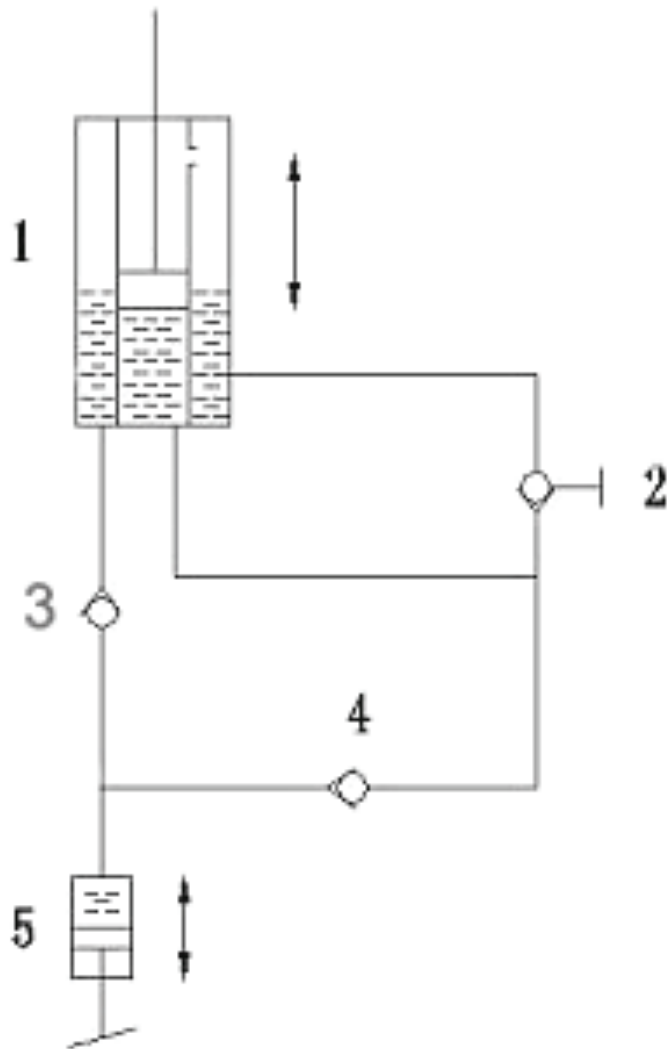
Notice: For safety reasons, it is recommended to keep the drum as low as possible while moving it.

3.3 Lowering the drum

After moving the drum to its destination, slowly release the degressive valve lever until the drum is securely on the ground. The upper hook of the support & clamp mechanism (5) will automatically release the drum. Once the drum is fully released, tighten the degressive valve lever.

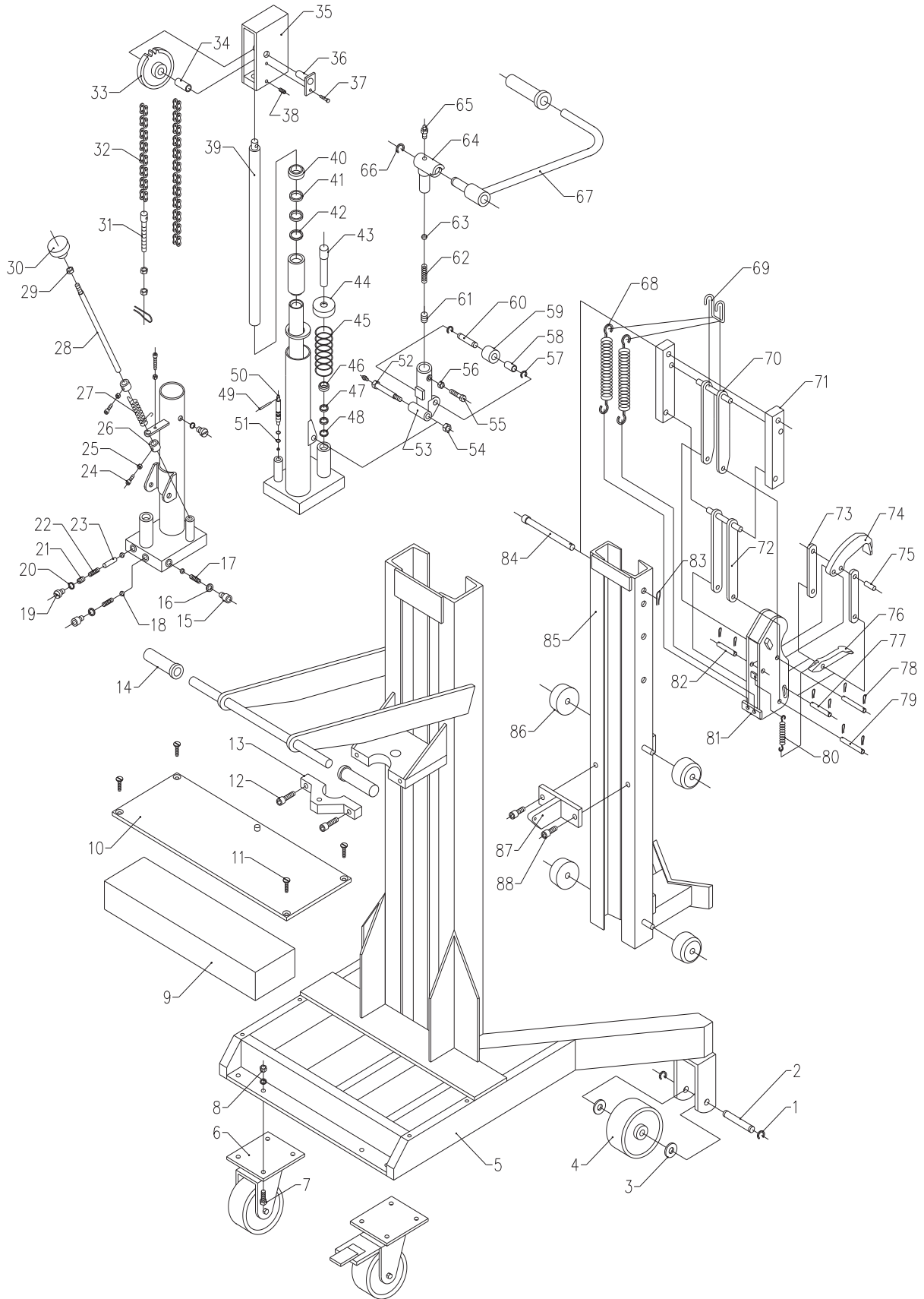
Notice: For safety reasons, release the degressive valve lever as slowly as possible when lowering the drum.

4. HYDRAULIC CIRCUIT DIAGRAM



No.	Description
1	Hydraulic Cylinder
2	Swivel Discharge Valve
3	Relief Valve
4	Work Valve
5	Work Cylinder

5. EXPLODED VIEW & PART LIST



No.	Model	Description	Qty	No.	Model	Description	Qty
1	DC878	Split Ring	4	45		Pump Ring	1
2	DC879	Pin Axle	2	46		Dustproof Ring	1
3	DC880	Washer	4	47		O-Ring	2
4	DC881	Front Wheel	2	48		Nylon Washer	1
5		Base Track Assy.	1	49		Spring Pin	1
6	DC882	Rear Wheel (Versatile Wheel)	2	50		Valve Core	1
7	DC883	Connecting Bolt	8	51		O-Ring	2
8	DC884	Hex Nut	8	52		Pin Axle	1
9		Block	2	53		Seat	1
10		Cover Board	1	54		Nut	1
11		Screw	4	55		Hex Bolt	1
12		Screw	2	56		Hex Nut	1
13		Cover	1	57		Split Ring	2
14	DC885	Rubber Sheath	3	58		Bearing	1
15		Inside Hex Screw	2	59		Ring	1
16		Copper Washer	2	60		Pin Axle	1
17		Taper Spring	2	61		Adjusting Screw	1
18		Steal Ball	4	62		Spring	1
19		Screw Plunger	2	63		Steel Ball	1
20		O-Ring	2	64		Sheath	1
21		Locking Screw	1	65		Oil Cup	2
22		Spring	1	66		Split Ring	1
23		Short Pin	1	67	DC887	Lever	1
24		Inside Hex Screw	2	68		Pulling Spring	2
25		Hex Nut	2	69		Hook	1

No.	Model	Description	Qty	No.	Model	Description	Qty
26		Locating Ring	2	70		Connecting Rack	1
		Torsional Spring	1	71		Connecting Block	2
28		Unitary Valve Rod	1	72		Connecting Rack	1
29		Hex Nut	1	73		Connecting Board	2
30	DC886	Handle	1	74	DC888	Upper Hook	1
31		Chain Bolt	1	75	DC889	Pin Axle	1
32		Roller Chain	1	76	DC890	Lower Hook	1
33		Chain Wheel	1	77		Pin Axle	1
34		Bearing	1	78		Split Pin	8
35		Chain Cover	1	79		Pin Axle	2
36		Chain Pin Axle	1	80		Pulling Spring	1
37		Hex Bolt	1	81		Shell Body	1
38		Locking Bolt	1	82		Pin Axle	1
39		Plunger Rod	1	83		Split Pin	1
40		Dustproof Ring	1	84		Pin Axle	1
41		O-Ring	2	85		Supporting Frame Assy.	1
42		Nylon Washer	1	86		Roller Wheel	4
43		Pump Rod	1	87		Chain Locking Board	1
44		Pump Cover	1	88		Screw	2