



PF705 Manual Sealless Steel Strapping Tool

SPECIFICATIONS

1. Strap Dimensions: **Widths:** 13mm (1/2"), 16mm (5/8"), 19mm (3/4") **Thickness :** 0.38mm (.015") – 0.70mm (0.27")
2. Weight: 3.5 kg

SAFETY INSTRUCTIONS

1. Always read operating instructions before using the tool.
2. Always wear eye, face and hand protection when operating the tool.
3. Keep hands/fingers or other parts of the body away from areas that can be pinched or cut.

MAINTENANCE INSTRUCTIONS

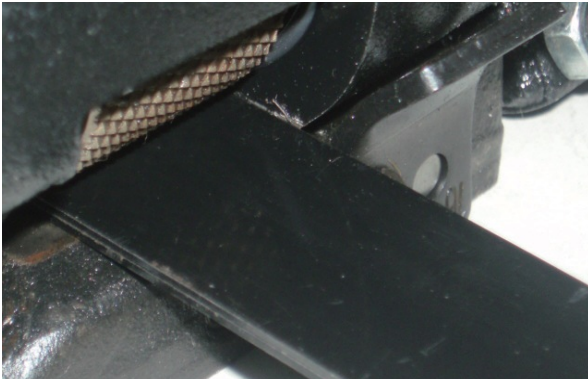
1. Clean this tool periodically with compressed air to remove any dust or dirt. The punch (#10), dies (#21 and #22), gripper (#8) and feedwheel (#59) must be cleaned regularly.
2. Apply light machine oil to all moving parts.
3. Check tool regularly for broken or worn parts.
4. Use the original replacement parts to ensure tool reliability.

OPERATING INSTRUCTIONS

Prior to operation, make sure the front strap stop (#13), side strap stop (#91 for 16mm and 19mm, #92 for 13mm and 19mm), and rear strap stop (#36 for 16mm and 19mm, #37 for 13mm and 16mm) are equivalent to your strap width. (See ADJUSTMENTS-TO ADJUST STRAP STOPS for installation of strap stops)



1. Feed the strapping around the package and hold in place with left hand. The end of strap is underneath.



INSERT THE STRAP INTO THE SEALING SECTION AGAINST THE WALL OF HOUSING



- 2.** Pull the feedwheel handle (#58) toward the sealing handle (#73) with your right hand. While in this position, insert the strap into the sealing section against the front strap stop (#13) so the strap sits inside the side strap stop (#91 or #92). The end of strap should protrude 1" beyond the front strap stop (#13). Release the feedwheel handle (#58) so the strap is locked and ready to be tightened.

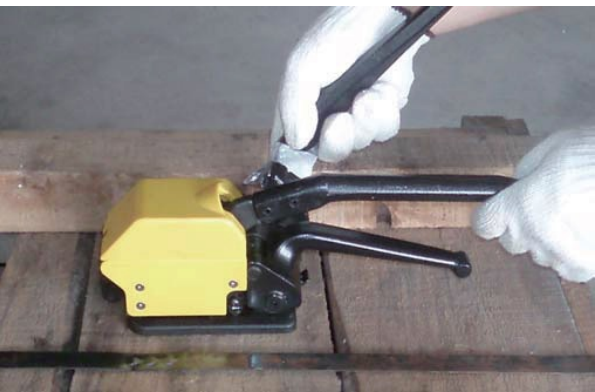
STRAP MUST SIT INSIDE THE SIDE STRAP STOP



- 3.** Hold the sealing handle (#73) firmly with left hand. Pump the tensioning handle (#82) with your right hand until the desired tension is reached.



- 4.** Place right hand firmly on the tensioning handle (#82) for supporting the tool. Move the sealing handle (#73) all the way forward until it hits the stop (#51). This seals and cuts the strap.



- 5.** Move the sealing handle (#73) back to its original position. Hold the cut off strap end with the left hand. Lift the feed wheel handle (#58) toward the sealing handle (#73) to release the strap. Slide the tool away to the right.

ADJUSTMENTS

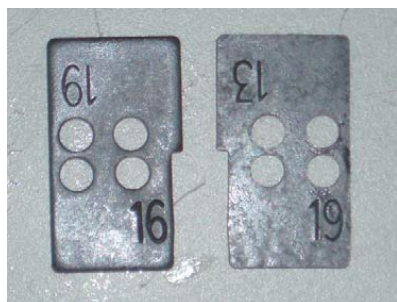
TO ADJUST STRAP STOPS (All front, side and rear strap stops must set in the same number prior to use)

13mm (1/2")

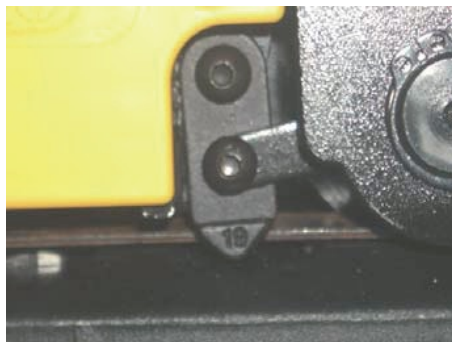
16mm (5/8")

19mm (3/4")

FRONT STRAP STOP (#13)



SIDE STRAP STOP (#91 AND #92)

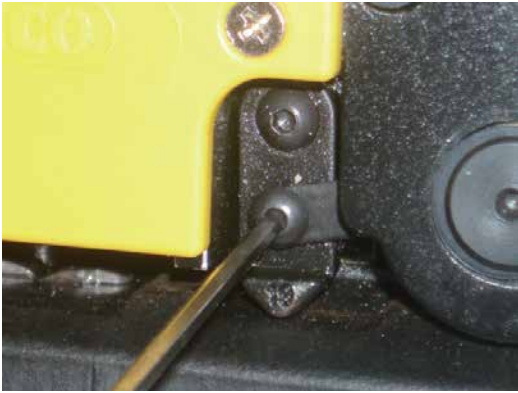


REAR STRAP STOP (#36 AND #37)



TO ADJUST FRONT AND REAR STRAP STOPS

Loosen screws (#14) in front of and behind the housing (#39). Put the size you want in place and retighten the screws (#14).



TO ADJUST SIDE STRAP STOP

Loosen screws (#94 and #96). Put the size you want in place and retighten the screws (#94 and #96).



TO ADJUST SEALING DEPTH

(To avoid cutting strap too deep or fail to cut the strap)
Loosen nut (#52), turn stop (#51) counterclockwise to decrease sealing depth and cutting depth, or turn clockwise to increase sealing depth and cutting depth, then retighten the stop (#51) and nut (#52).



ADJUST GRIPPER



ADJUST FEEDWHEEL

TO ADJUST GAP BETWEEN THE FEEDWHEEL (#59) AND GRIPPER (#8)

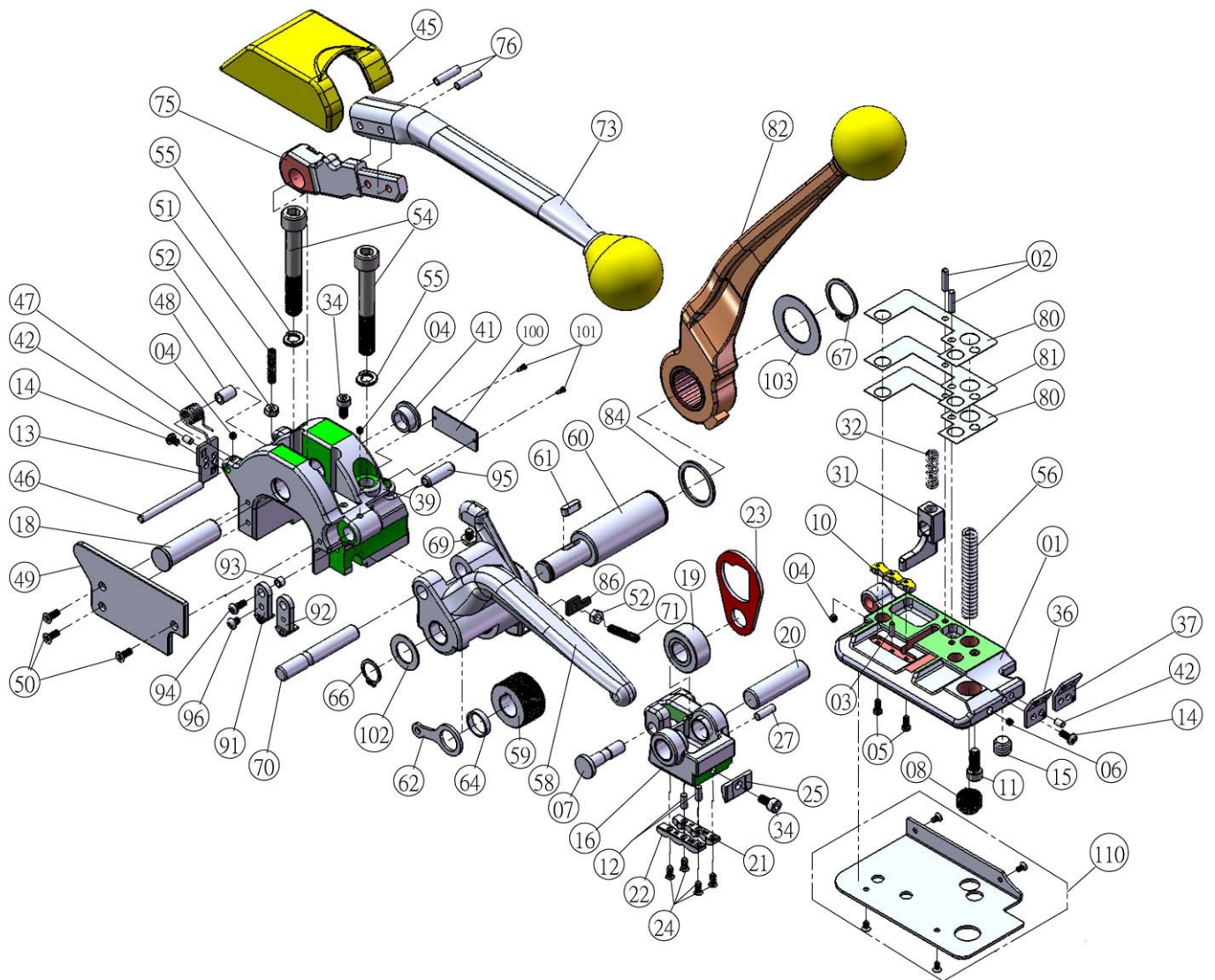
(To prevent the strap from slipping)



TO ADJUST FEEDWHEEL HANDLE SPRING (#56)

(To increase gripping performance of feedwheel #59)
Turn the socket set screw (#15) with hexagon key clockwise to increase gripping performance.

PARTS LIST



PARTS LIST Cont'd

No.	Part No.	Description	QTY
01		Base	1
02	PG480	Pin	2
03	PG481	Pin	1
04	PG482	Socket Set Screw	3
05	PG437	Replacement Screw #1 for PF705	2
06		Socket Set Screw	1
07	PG483	Bolt	1
08	PF801	Replacement Cutter for PF705	1
10	PG438	Replacement Punch for PF705	1
11		Screw	1
12	PG484	Socket Set Screw	2
13	PG439	Replacement Front Strap Stop for PF705	1
14	PG440	Replacement Screw #2 for PF705	2
15	PG441	Replacement Socket Set Screw for PF705	1
16		Cutter Support	1
18	PG442	Replacement Sealing Handle Shaft for PF705	1
19	PG485	Roller	1
20	PG486	Roller Pin	1
21	PG443	Replacement Die #1 for PF705	1
22	PG444	Replacement Die #2 for PF705	1
23	PG445	Replacement Link for PF705	1
24	PG446	Replacement Screw #3 for PF705	4
25	PF802	Replacement Cutter for PF705	1
27	PG487	Pin	1
31	PG447	Replacement Ejector for PF705	1
32	PG448	Replacement Pressure Spring for PF705	1
34	PG449	Replacement Screw #4 for PF705	2
36	PG450	Replacement Rear Strap Stop for PF705	1
37		Rear Strap Stop (For 13 and 16mm strap)	1
39		Housing	1
41	PG451	Replacement Trunnion for PF705	1
42	PG488	Pin	2
45		Cover	1
46		Parallel Pin	1
47		Cover Spring	1
48		Bushing	1

No.	Part No.	Description	QTY
49	PG452	Replacement Side Plate for PF705	1
50	PG453	Replacement Screw #5 for PF705	3
51	PG454	Replacement Stop for PF705	1
52	PG455	Replacement Nut for PF705	2
54	PG456	Replacement Bolt for PF705	2
55		Washer	2
56	PF803	Replacement Feed Wheel Handle Spring for PF705	1
58	PG368	Feed Wheel Handle for PF705	1
59	PF804	Replacement Feed Wheel for PF705	1
60	PG459	Replacement Shaft for PF705	1
61	PG460	Replacement Double Circle Key for PF705	1
62	PG461	Replacement Strap Guide for PF705	1
64	PG462	Replacement Washer #1 for PF705	1
66	PG463	Replacement Retaining Ring #1 for PF705	1
67	PG464	Replacement Retaining Ring #2 for PF705	1
69		Head Bolt	1
70		Parallel Pin	1
71	PG489	Socket Set Screw	1
72	PG465	Replacement Sealing Handle for PF705	1
80	PG466	Replacement Shim .35mm for PF705	2
81	PG467	Replacement Shim .15mm for PF705	1
82	PG369	Tensioning Handle for PF705	1
86	PG490	Tensioning Handle Stop	1
91	PG491	Side Strap Stop (For 16 and 19mm Strap)	1
92		Side Strap Stop (For 13 and 16mm Strap)	1
93	PG492	Bushing	1
94	PG469	Replacement Screw #6 for PF705	1
95		Pin	1
96	PG470	Replacement Screw #7 for PF705	1
102	PG471	Replacement Washer #2 for PF705	1
103	PG472	Replacement Washer #3 for PF705	3
110		Base Protector	1