

---

**Instruction Manual**  
**MJ526**  
**Mobile Hydraulic Scissor Lift Table**  
**1540 lbs. (700 kg)**



**KLETON**

---

---

## **WARNING!**

Read this operation manual carefully and understand fully the operating instructions. Improper use of this unit could result in injury.

- DO NOT put foot or hand in scissor mechanism.
- Keep neighbouring persons away from the unit when in use.
- DO NOT stand in front or behind of lift table when it is in use.
- DO NOT crawl under the table.
- DO NOT put foot in front of rolling wheels.
- DO NOT use lift table on slope or inclined surfaces.
- DO NOT lift or ride people on this unit.

## **CAUTION!**

- DO NOT move this unit when lifting or lowering the bed or when the bed is in an elevated position. (Bed must be lowered when the unit is running)
- DO NOT use this table for any purpose other than it's intended use and do not load with more than the rated capacity.
- DO NOT allow persons to operate this table without complete understanding of its operation.
- DO NOT lower the bed too quickly.
- During loading/unloading operation, do not release the parking brake.
- Load should be distributed on at least 80% of the table area. Stop operation of lift table if load becomes too unstable, do not place objects protruding off edge of the bed.
- DO NOT modify lift table without manufacturers written consent.

## **Daily Inspection**

Daily inspection of this unit is critical in order to locate any malfunction or fault. Check the following daily before operating your lift table.

1. Check for bending or cracking of the lift table.
2. Check for any oil leakage from the cylinder.
3. Check for vertical creep of the table.
4. Check for smooth movement of the wheels.
5. Ensure that brakes are fully functional.
6. Ensure that all nuts and bolts are firmly tightened.

## **Assembly method**

The lift table is packed in a cardboard box. Assembling of the jack up handle and pedal is required.

**WARNING:** Assembly work must be done on a flat surface; wheels must be choked to prevent accidental rolling of the unit.

1. Remove nuts and spring washers from the end of handle and insert the handle into the holes on frame. Tighten the handle using removed nuts and washers with the largest hex key supplied in the box.
  2. Insert the jack pedal into the pedal pipe and position the tapered side pedal end to right. Tighten the jack pedal using the removed nut and washer with the smallest hex key supplied in the box.
-

---

# OPERATING THE LIFT TABLE

## How to use the brake

The brake is located next to the swivel caster on right hand side.

1. To brake the lift table, press the brake pedal.
2. To release the brake, lift up the brake pedal.

**CAUTION:** Put lift table in brake mode when stationary in order to prevent sudden movement.

## Lifting the Table

To lift the table, press the lifting pedal several times until the table reaches the desired height. The table lowers slightly after reaching the highest position. Maximum Capacity of this table is 1540 lbs. (700 kg)

**WARNING:** Do not overload lift table, stay within the rated capacity.

Do not load the table on sides or ends only. Load must be distributed on at least 80% of table area.

## Lowering the Table

**WARNING:** DO NOT put foot or hand in scissor mechanism. The rotating knob lowers the table.

**NOTE:** The hydraulic cylinder is designed to hold table. As is the nature of the hydraulic system, table lowers very slowly over an extended period of time. Please note that the table does not stay at the same height indefinitely.

## Specifications

Model	Capacity	Table	Table Height	Foot Pedal Strokes to Elevate	Wheel	Weight
MJ526	700 kg. 1540 lbs.	1220 x 610 mm 48" x 24"	445-1500 mm 17.5" x 59.1"	97	127 mm 5"	195 kg. 430 lbs.

## Service Instructions

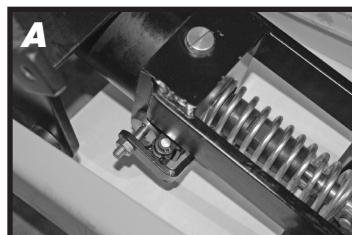
**Change hydraulic oil every 12 months**

**Lubricate the following areas every month:** Fitting of Cylinder/oil, Roller Friction Surface/grease, Link Pin/oil, Pedal Fitting Point/oil, Grease Nipple/grease

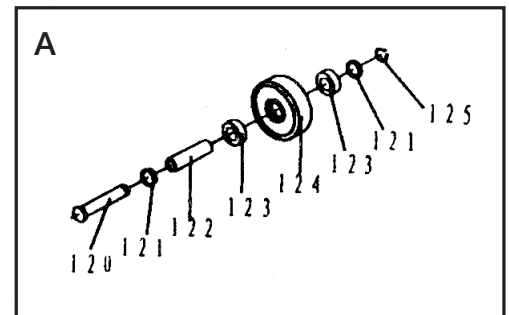
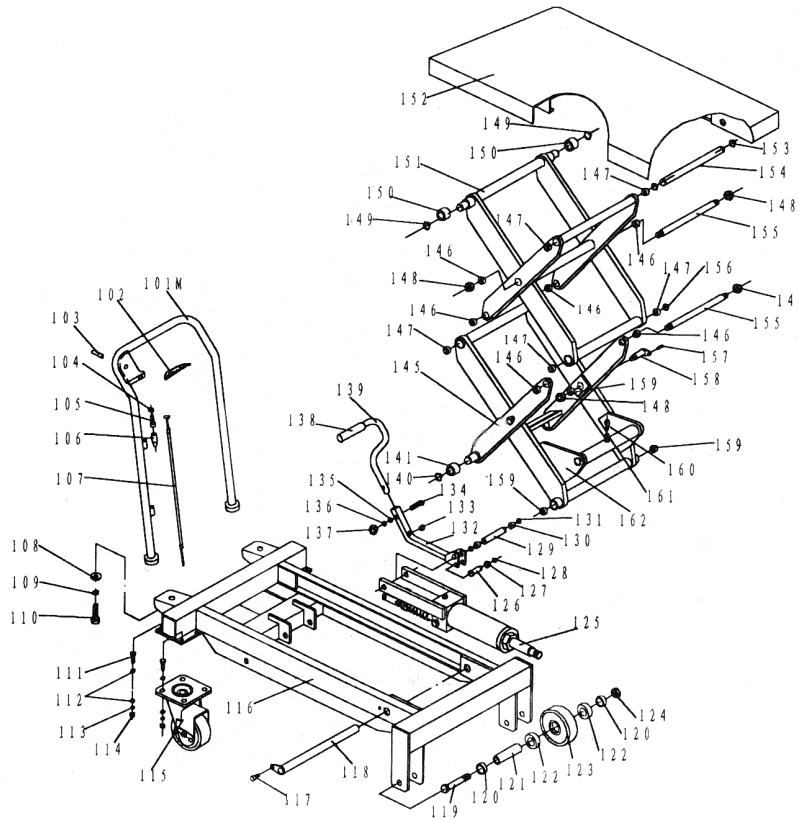
## Troubleshooting

**If the table does not lift when pressing lifting pedal several times:**

- Adjust the control valve located on the hydraulic cylinder (A) by releasing the set screw and locking nut (B) using a flat screwdriver and a 14mm wrench.
- Test the control lever and lifting pedal.



# LIFT TABLE PARTS LIST

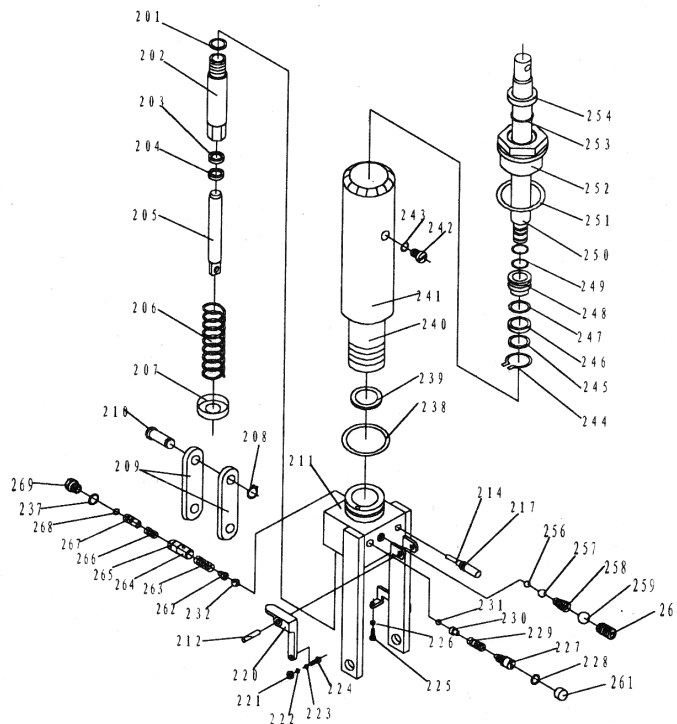


Part No.	Order No.	Description	Qty.
101M		Handle Grip	1
102		Control Handle	1
103		Elastic Pin	1
104		Nut	1
105		Bolt with Hole	1
106		Jacket	1
107	MK223	Pull Rod	1
108		Big Washer	2
109		Elastic Washer	2
110		Bolt	2
111		Bolt	8
112		Washer	16
113		Elastic Washer	8
114		Nut	8
115	MJ996	Swivel Caster	2
116		Frame	1
117		Screw	1
118		Shaft with Shoulder	1
119		Bolt	2
120		Washer	4
121		Axle	2

Part No.	Order No.	Description	Qty.
122		Bearing	4
123	MJ893	Wheel	2
124		Nut	2
125	MK571	Pump Unit	1
126		Pin	1
127		Washer	1
128		Retaining Ring	2
129		Shaft	1
130		Washer	2
131		Retaining Ring	2
132		Connecting Rod	1
133		Cushion	1
134		Bolt	1
135		Washer	1
136		Elastic Washer	1
137		Nut	1
138		Protection Cover	1
139		Pedal Bar	1
140		Retaining Ring	2
141		Roller	2
145		Elastic Pin	2

Part No.	Order No.	Description	Qty.
146		Bushing	6
147		Bushing	4
148		Nut	8
149		Retaining Ring	2
150		Upper Roller	2
151		Upper Fork Arm	1
152		Table	1
153		Retaining Ring	2
154		Long Shaft	1
155		Shaft	3
156		Washer	4
157		Screw	2
158		Fixing Shaft	2
159		Bushing	4
160		Screw	1
161		Washer	4
162		Lower Fork Arm	1
A	MN687	Wheel Assembly	2

# HYDRAULIC CYLINDER PARTS LIST



Part No.	Order No.	Description	Qty.
201		Seal Washer	1
202		Pump Cylinder	1
203	MK611	Dust Ring	1
204	MK612	Y-Seal	1
205		Pump Piston	1
206		Spring	1
207		Spring Cap	1
208		Retaining Ring	1
209		Joint Plate	2
210		Pin	1
211		Pump Body	1
212		Elastic Pin	1
213		Spring	1
214		Strike Pin	1
217	MJ715	O-Ring	2
220		Lever Plate	1
221		Nut	1
222		Elastic Washer	1
223		Washer	1
224		Bolt with Hole	1
225		Bolt with Hole	1

Part No.	Order No.	Description	Qty.
226		Nut	1
227		Adjusting Bolt	1
228	MJ726	O-Ring	1
229		Spring	1
230		Seat of Steel Ball	1
231		Steel Ball	1
232		Steel Ball	1
237		Seal Washer	1
238		O-Ring	1
239	MK639	Seal Washer	1
240		Cylinder	1
241		Housing	1
242		Bolt	1
243		Seal Washer	1
244		Retaining Ring	1
245		Washer	1
246	MK646	Y-Ring	1
247		O-Ring	1
248		Piston	1
249	MK649	O-Ring	1
250		Piston Rod	1

Part No.	Order No.	Description	Qty.
251	MK332	Seal Washer	1
252		Cylinder Cap	1
253		O-Ring	1
254		Dust Ring	1
256		Steel Ball	1
257		Steel Ball	1
258		Spring	1
259		Steel Ball	1
260		Screw	1
261		Cup	1
262		Seat of Steel Ball	1
263		Spring	1
264		Seat of Valve	1
265		O-Ring	1
266		Spring	1
267		Core of Valve	1
268		Retaining Ring	1
269		Plug	1