
Instruction Manual
MJ525
Mobile Hydraulic Scissor Lift Table
2200 lbs. (1000 kg)



KLETON

WARNING!

Read this operation manual carefully and understand fully the operating instructions. Improper use of this unit could result in injury.

- DO NOT put foot or hand in scissor mechanism.
- Keep neighbouring persons away from the unit when in use.
- DO NOT stand in front or behind of lift table when it is in use.
- DO NOT crawl under the table.
- DO NOT put foot in front of rolling wheels.
- DO NOT use lift table on slope or inclined surfaces.
- DO NOT lift or ride people on this unit.

CAUTION!

- DO NOT move this unit when lifting or lowering the bed or when the bed is in an elevated position. (Bed must be lowered when the unit is running)
- DO NOT use this table for any purpose other than it's intended use and do not load with more than the rated capacity.
- DO NOT allow persons to operate this table without complete understanding of its operation.
- DO NOT lower the bed too quickly.
- During loading/unloading operation, do not release the parking brake.
- Load should be distributed on at least 80% of the table area. Stop operation of lift table if load becomes too unstable, do not place objects protruding off edge of the bed.
- DO NOT modify lift table without manufacturers written consent.

Daily Inspection

Daily inspection of this unit is critical in order to locate any malfunction or fault. Check the following daily before operating your lift table.

1. Check for bending or cracking of the lift table.
2. Check for any oil leakage from the cylinder.
3. Check for vertical creep of the table.
4. Check for smooth movement of the wheels.
5. Ensure that brakes are fully functional.
6. Ensure that all nuts and bolts are firmly tightened.

Assembly method

The lift table is packed in a cardboard box. Assembling of the jack up handle and pedal is required.

WARNING: Assembly work must be done on a flat surface; wheels must be choked to prevent accidental rolling of the unit.

1. Remove nuts and spring washers from the end of handle and insert the handle into the holes on frame. Tighten the handle using removed nuts and washers with the largest hex key supplied in the box.
 2. Insert the jack pedal into the pedal pipe and position the tapered side pedal end to right. Tighten the jack pedal using the removed nut and washer with the smallest hex key supplied in the box.
-

OPERATING THE LIFT TABLE

Lifting the Table

To lift the table, press the lifting pedal several times until the table reaches the desired height. The table lowers slightly after reaching the highest position. Maximum Capacity of this table is 2200 lbs. (1000 kg)

WARNING: Do not overload lift table, stay within the rated capacity.

Do not load the table on sides or ends only. Load must be distributed on at least 80% of table area.

Lowering the Table

WARNING: DO NOT put foot or hand in scissor mechanism. The rotating knob lowers the table.

NOTE: The hydraulic cylinder is designed to hold table. As is the nature of the hydraulic system, table lowers very slowly over an extended period of time. Please note that the table does not stay at the same height indefinitely.

Specifications

Model	Capacity	Table	Table Height	Foot Pedal Strokes to Elevate	Wheel	Weight
MJ525	1000 kg. 2200 lbs.	2035 x 750 mm 80.1" x 29.5"	300-1360 mm 11.8" x 53.5"	200	127 mm 5"	198 kg. 436 lbs.

Service Instructions

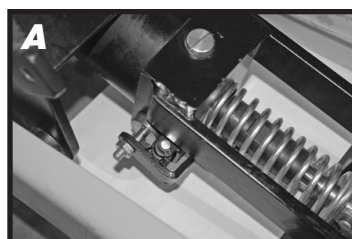
Change hydraulic oil every 12 months

Lubricate the following areas every month: Fitting of Cylinder/oil, Roller Friction Surface/grease, Link Pin/oil, Pedal Fitting Point/oil, Grease Nipple/grease

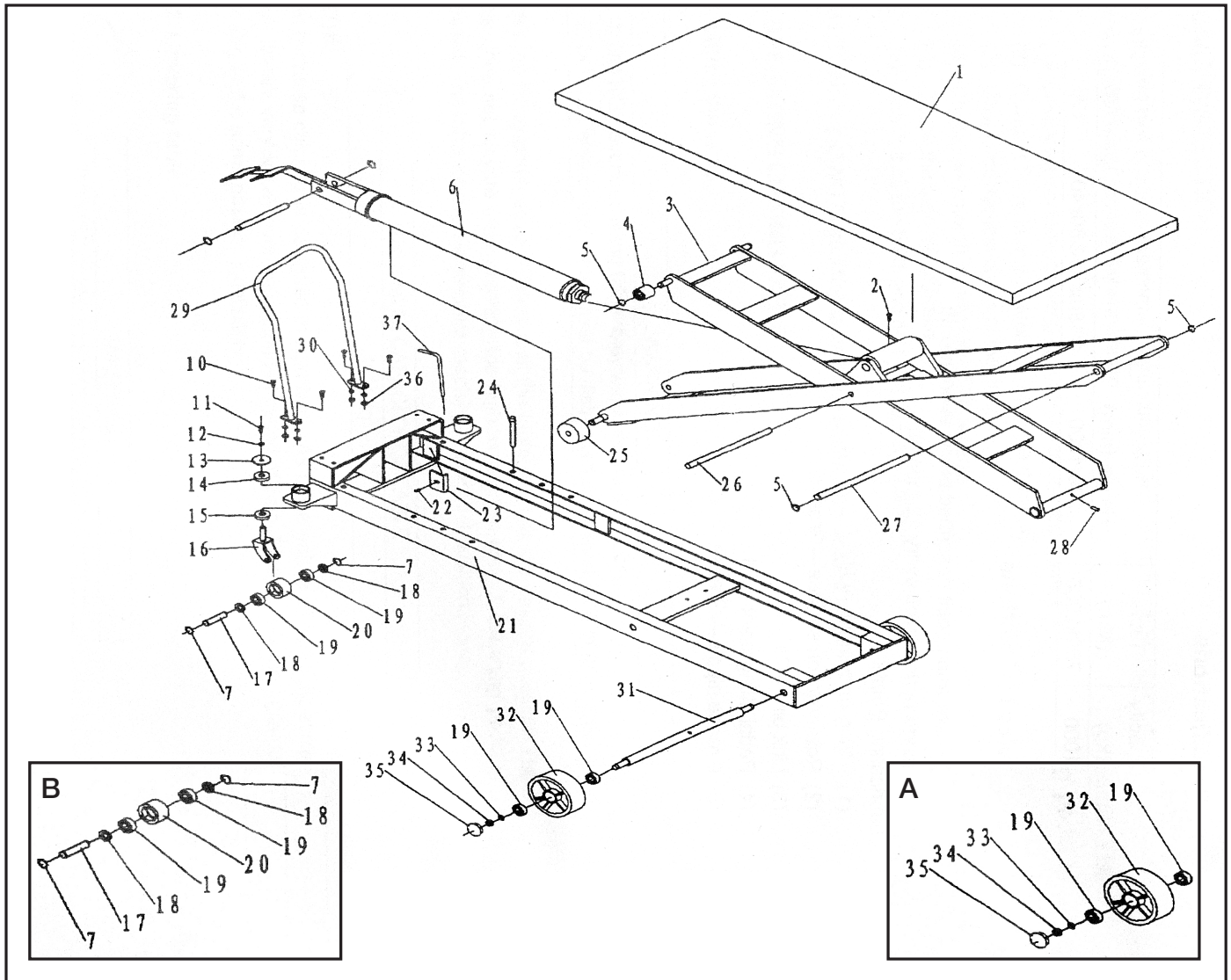
Troubleshooting

If the table does not lift when pressing lifting pedal several times:

- Adjust the control valve located on the hydraulic cylinder (A) by releasing the set screw and locking nut (B) using a flat screwdriver and a 14mm wrench.
- Test the control lever and lifting pedal.



LIFT TABLE PARTS LIST

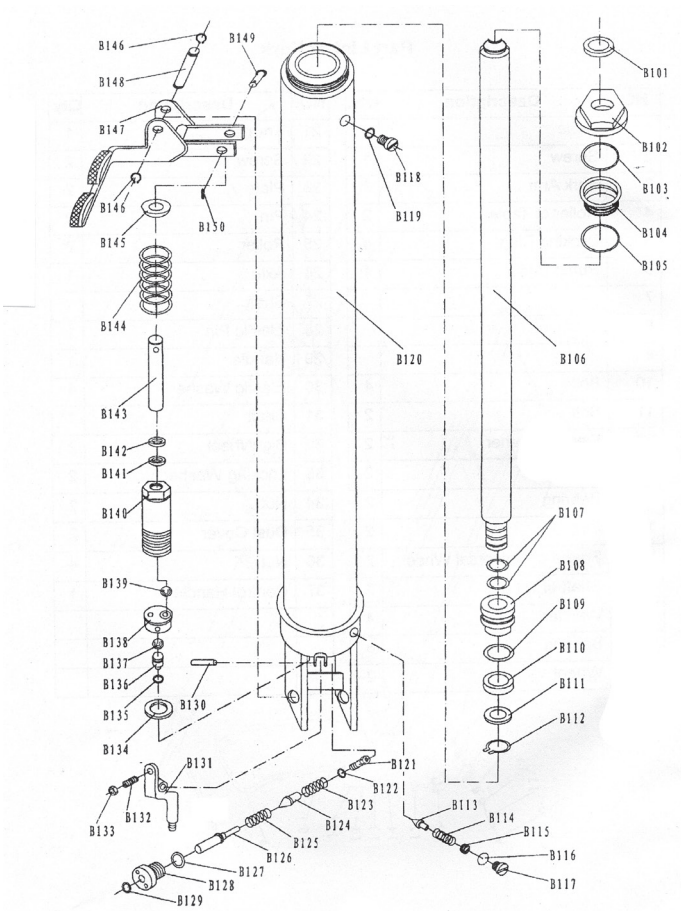


Part No.	Order No.	Description	Qty
1		Table	1
2		Screw	1
3		Fork Arm	1
4		Roller of Table	2
5		Locking Ring	4
6	MK467	Pump Unit	1
10		Bolt	4
11		Bolt	2
12		Elastic Washer	2
13		Cover	2
14	MK472	Bearing	2
15	MK473	Bearing	2

Part No.	Order No.	Description	Qty
16		Frame of Univ. Wheel	2
17		Shaft of Wheel	2
18		Washer	4
19	MK477	Bearing	8
20	MK478	Wheel	2
21		Frame	1
22		Screw	2
23		Plate	2
24		Pin	2
25		Roller	2
26		Axle	1
27		Shaft	

Part No.	Order No.	Description	Qty
28		Elastic Pin	1
29		Handle	1
30		Elastic Washer	4
31		Shaft	1
32	MK490	Big Wheel	2
33		Locking Washer	2
34		Nut	2
35		Dust Cover	2
36		Nut	4
37		Control Handle	1
A	MN691	Front Wheel Assembly	2
B	MN690	Steer Wheel Assembly	2

HYDRAULIC CYLINDER PARTS LIST



Part No.	Order No.	Description	Qty.	Part No.	Order No.	Description	Qty.	Part No.	Order No.	Description	Qty.
B101	MK496	Dust Ring	1	B119		Seal Washer	1	B137		Steel Ball	1
B102		Screw Cover	1	B120		Body of Pump	1	B138		Body of Valve	1
B103	MK498	O-Ring	1	B121		Screw	1	B139		Steel Ball	1
B104		Sleeve	1	B122		Seal Washer	1	B140		Cylinder	1
B105	MK500	O-Ring	1	B123		Spring	1	B141	MJ702	O-Ring	1
B106		Big Piston Rod	1	B124		Valve Spindle of Pump	1	B142	MJ701	Y-Ring	1
B107	MK502	O-Ring	2	B125		Spring	1	B143		Piston Rod	1
B108		Piston	1	B126		Release Valve Pin	1	B144		Spring	1
B109		O-Ring	1	B127	MK522	O-Ring	1	B145		Cap of Spring	1
B110	MK505	Y-Ring	1	B128		Sleeve of Valve	1	B146		Locking Ring	2
B111		Washer	1	B129	MK524	O-Ring	1	B147		Pedal	1
B112		Locking Ring	1	B130		Elastic Pin	1	B148		Shaft	1
B113		Safety Valve Spindle	1	B131	MK526	Lever Plate	1	B149		Shaft	1
B114		Spring	1	B132	MK527	Nut	1	B150		Elastic Pin	1
B115		Adjusting Screw	1	B133	MK528	Screw	1				
B116	MK511	Seal Washer	1	B134	MK529	Seal Washer	1				
B117		Screw	1	B135	MK530	O-Ring	1				
B118		Screw	1	B136		Post	1				