
Instruction Manual
MJ523
Mobile Hydraulic Scissor Lift Table
1650 lbs. (750 kg)



KLETON

WARNING!

Read this operation manual carefully and understand fully the operating instructions. Improper use of this unit could result in injury.

- DO NOT put foot or hand in scissor mechanism.
- Keep neighbouring persons away from the unit when in use.
- DO NOT stand in front or behind of lift table when it is in use.
- DO NOT crawl under the table.
- DO NOT put foot in front of rolling wheels.
- DO NOT use lift table on slope or inclined surfaces.
- DO NOT lift or ride people on this unit.

CAUTION!

- DO NOT move this unit when lifting or lowering the bed or when the bed is in an elevated position. (Bed must be lowered when the unit is running)
- DO NOT use this table for any purpose other than it's intended use and do not load with more than the rated capacity.
- DO NOT allow persons to operate this table without complete understanding of its operation.
- DO NOT lower the bed too quickly.
- During loading/unloading operation, do not release the parking brake.
- Load should be distributed on at least 80% of the table area. Stop operation of lift table if load becomes too unstable, do not place objects protruding off edge of the bed.
- DO NOT modify lift table without manufacturers written consent.

Daily Inspection

Daily inspection of this unit is critical in order to locate any malfunction or fault. Check the following daily before operating your lift table.

1. Check for bending or cracking of the lift table.
2. Check for any oil leakage from the cylinder.
3. Check for vertical creep of the table.
4. Check for smooth movement of the wheels.
5. Ensure that brakes are fully functional.
6. Ensure that all nuts and bolts are firmly tightened.

Assembly method

The lift table is packed in a cardboard box. Assembling of the jack up pedal is required.

WARNING: Assembly work must be done on a flat surface; wheels must be chocked to prevent accidental rolling of the unit.

1. Insert the jack pedal into the pedal pipe and position the tapered side pedal end to right. Tighten the jack pedal using the removed nut and washer with the smallest hex key supplied in the box.
-

OPERATING THE LIFT TABLE

How to use the brake

The brake is located next to the swivel caster on right hand side.

1. To brake the lift table, press the brake pedal.
2. To release the brake, lift up the brake pedal.

CAUTION: Put lift table in brake mode when stationary in order to prevent sudden movement.

Lifting the Table

To lift the table, press the lifting pedal several times until the table reaches the desired height. The table lowers slightly after reaching the highest position. Maximum Capacity of this table is 1650 lbs. (750kg).

WARNING: Do not overload lift table, stay within the rated capacity.

Do not load the table on sides or ends only. Load must be distributed on at least 80% of table area.

Lowering the Table

WARNING: DO NOT put foot or hand in scissor mechanism. The rotating knob lowers the table.

NOTE: The hydraulic cylinder is designed to hold table. As is the nature of the hydraulic system, table lowers very slowly over an extended period of time. Please note that the table does not stay at the same height indefinitely.

Specifications

Model	Capacity	Table	Table Height	Foot Pedal Strokes to Elevate	Wheel	Weight
MJ523	750 kg. 1650 lbs.	1000 x 510 mm 39.4" x 20.1"	420-900 mm 16.5" x 35.4"	45	147 mm 5.75"	125 kg. 275 lbs.

Service Instructions

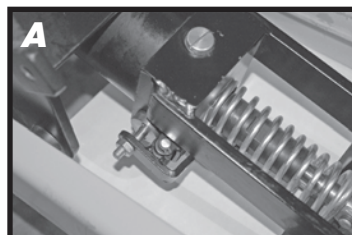
Change hydraulic oil every 12 months

Lubricate the following areas every month: Fitting of Cylinder/oil, Roller Friction Surface/grease, Link Pin/oil, Pedal Fitting Point/oil, Grease Nipple/grease

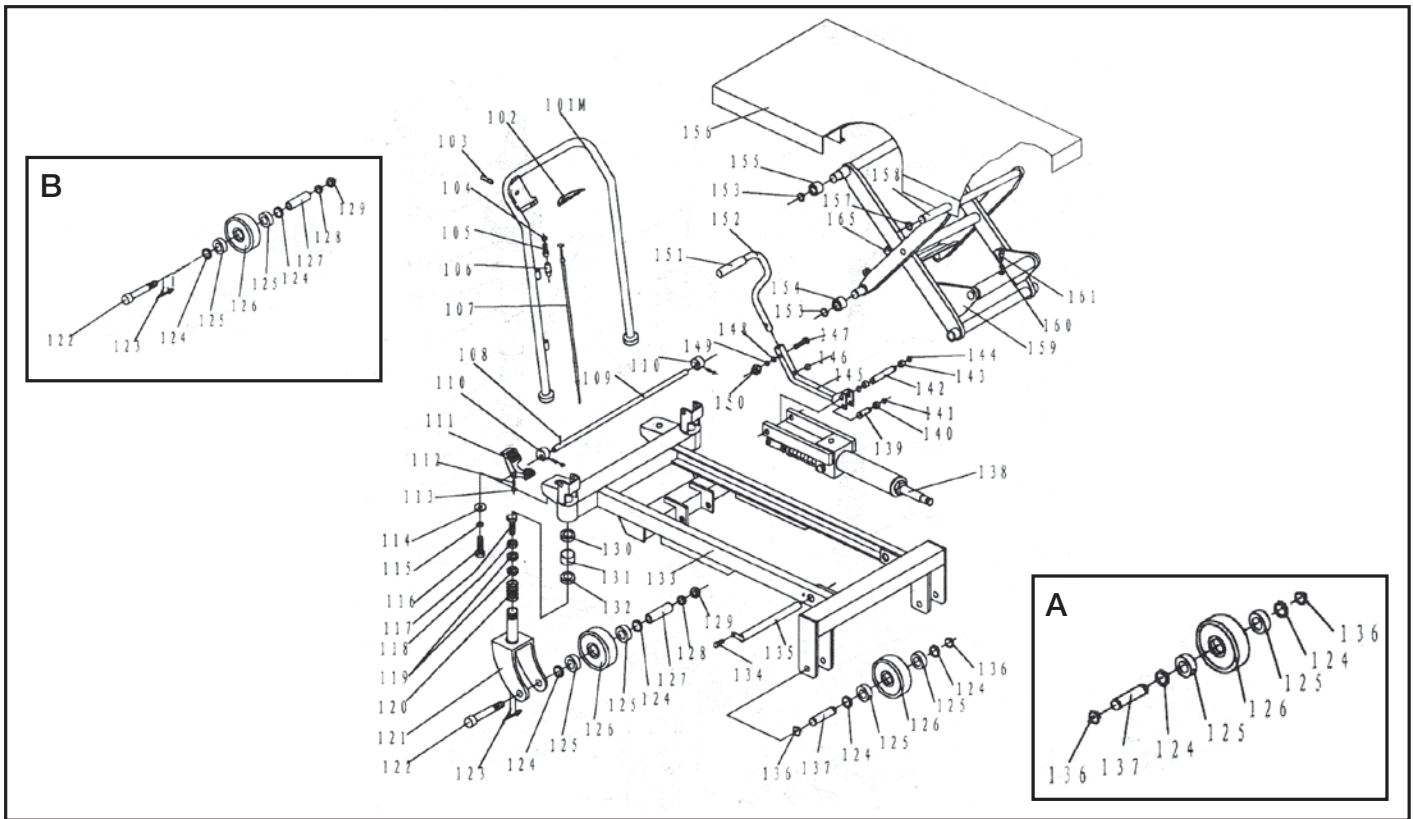
Troubleshooting

If the table does not lift when pressing lifting pedal several times:

- Adjust the control valve located on the hydraulic cylinder (A) by releasing the set screw and locking nut (B) using a flat screwdriver and a 14mm wrench.
- Test the control lever and lifting pedal.



LIFT TABLE PARTS LIST

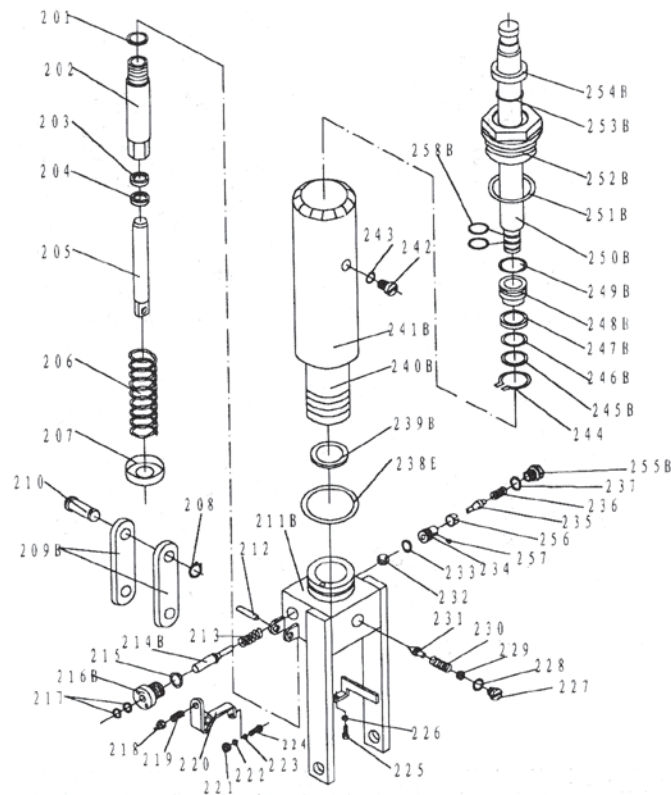


Part No.	Order No.	Description	Qty.
101M		Handle Grip	1
102		Control Handle	1
103		Elastic Pin	1
104		Nut	1
105		Bolt with Hole	1
106		Jacket	1
107	MK223	Pull Rod	1
108		Elastic Pin	1
109		Shaft	1
110		Cam	2
111		Pedal	1
112		Screw	3
113		Nut	3
114		Big Washer	2
115		Elastic Washer	2
116		Bolt	2
117		Bolt	2
118		Nut	2
119		Round Nut	4
120		Spring	2
121		Seat of Wheel	2
122		Bolt	2

Part No.	Order No.	Description	Qty.
123		Brake	2
124		Washer	4
125	MK241	Bearing	8
126	MK242	Wheel	4
127		Axle	2
128		Elastic Washer	2
129		Nut	2
130		Bearing	2
131		Washer	2
132		Retaining Ring	2
133		Frame	1
134		Bolt	1
135		Shaft	1
136		Retaining Ring	4
137		Axle of Wheel	2
138		Pump Unit	1
139		Pin	1
140		Roller	1
141		Retaining Ring	1
142		Pin	1
143		Washer	2
144		Retaining Ring	2

Part No.	Order No.	Description	Qty.
145		Connecting Rod	
146		Cushion	1
147		Bolt	1
148		Washer	1
149		Elastic Washer	1
150		Nut	1
151		Protective Cover	1
152		Pedal Bar	1
153		Retaining Ring	4
154		Roller	2
156		Table	1
157		Retaining Ring	2
158		Shaft	2
159		Fork Arm	1
160		Elastic Washer	1
161		Screw	1
155		Roller	2
165		Elastic Pin	2
A	MN689	Front Wheel Assembly	2
B	MN688	Steer Wheel Assembly	2

HYDRAULIC CYLINDER PARTS LIST



Part No.	Order No.	Description	Qty.
201		Seal Washer	1
202		Pump Cylinder	1
203	MJ701	Dust Ring	1
204	MJ702	Y-Seal	1
205		Pump Piston	1
206		Spring	1
207		Spring Cap	1
208		Retaining Ring	1
209B		Joint Plate	2
210		Pin	1
211B		Pump Body	1
212		Elastic Pin	1
213		Spring	1
214B		Strike Pin	1
215	MJ713	Seal Washer	1
216B		Axle Sleeve	1
217	MJ715	O-Ring	2
218		Nut	1
219		Screw	1

Part No.	Order No.	Description	Qty.
220		Lever Plate	1
221		Nut	1
222		Elastic Washer	1
223		Washer	1
224		Bolt with Hole	1
225		Bolt with Hole	1
226		Nut	1
227		Plug	1
228	MJ726	O-Ring	1
229		Adjusting Bolt	1
230		Spring	1
231		Spindle of Safety Valve	1
232		Steel Ball	1
233	MJ731	O-Ring	1
234		Seat of Pumping Valve	1
235		Spindle of Pumping Valve	1
236		Spring	1
237		Seal Washer	1
238B	MK319	O-Ring	1

Part No.	Order No.	Description	Qty.
239B	MK320	Seal Washer	1
240B		Cylinder	1
241B		Housing	1
242		Bolt	1
243		Seal Washer	1
244		Retaining Ring	1
245B		Washer	1
246B	MK327	O-Ring	1
247B	MK328	Cup Packing	1
248B		Piston	1
249B	MK330	O-Ring	1
250B		Piston Rod	1
251B	MK332	Seal Washer	1
252B		Cylinder Cap	1
253B	MK334	O-Ring	1
254B	MK335	Dust Ring	1
255B		Plug	1
256		Liquid Throttle Sheath	1
257		Bolt	1
258B	MJ747	O-Ring	2