
Instruction Manual

MJ521

Mobile Hydraulic Scissor Lift Table

1100 lbs. (500 kg)



KLETON

WARNING!

Read this operation manual carefully and understand fully the operating instructions. Improper use of this unit could result in injury.

- DO NOT put foot or hand in scissor mechanism.
- Keep neighbouring persons away from the unit when in use.
- DO NOT stand in front or behind of lift table when it is in use.
- DO NOT crawl under the table.
- DO NOT put foot in front of rolling wheels.
- DO NOT use lift table on slope or inclined surfaces.
- DO NOT lift or ride people on this unit.

CAUTION!

- DO NOT move this unit when lifting or lowering the bed or when the bed is in an elevated position. (Bed must be lowered when the unit is running)
- DO NOT use this table for any purpose other than it's intended use and do not load with more than the rated capacity.
- DO NOT allow persons to operate this table without complete understanding of its operation.
- DO NOT lower the bed too quickly.
- During loading/unloading operation, do not release the parking brake.
- Load should be distributed on at least 80% of the table area. Stop operation of lift table if load becomes too unstable, do not place objects protruding off edge of the bed.
- DO NOT modify lift table without manufacturers written consent.

Daily Inspection

Daily inspection of this unit is critical in order to locate any malfunction or fault. Check the following daily before operating your lift table.

1. Check for bending or cracking of the lift table.
2. Check for any oil leakage from the cylinder.
3. Check for vertical creep of the table.
4. Check for smooth movement of the wheels.
5. Ensure that brakes are fully functional.
6. Ensure that all nuts and bolts are firmly tightened.

Assembly method

The lift table is packed in a cardboard box. Assembling of the jack up pedal is required.

WARNING: Assembly work must be done on a flat surface; wheels must be chocked to prevent accidental rolling of the unit.

1. Insert the jack pedal into the pedal pipe and position the tapered side pedal end to right. Tighten the jack pedal using the removed nut and washer with the smallest hex key supplied in the box.
-

OPERATING THE LIFT TABLE

How to use the brake

The brake is located next to the swivel caster on right hand side.

1. To brake the lift table, press the brake pedal.
2. To release the brake, lift up the brake pedal.

CAUTION: Put lift table in brake mode when stationary in order to prevent sudden movement.

Lifting the Table

To lift the table, press the lifting pedal several times until the table reaches the desired height. The table lowers slightly after reaching the highest position. Maximum Capacity of this table is 1100 lbs. (500 kg).

WARNING: Do not overload lift table, stay within the rated capacity.

Do not load the table on sides or ends only. Load must be distributed on at least 80% of table area.

Lowering the Table

WARNING: DO NOT put foot or hand in scissor mechanism. The rotating knob lowers the table.

NOTE: The hydraulic cylinder is designed to hold table. As is the nature of the hydraulic system, table lowers very slowly over an extended period of time. Please note that the table does not stay at the same height indefinitely.

Specifications

Model	Capacity	Table	Table Height	Foot Pedal Strokes to Elevate	Wheel	Weight
MJ521	500 kg. 1100 lbs.	815 x 500 mm 32" x 19.7"	285-880 mm 11.2" x 34.6"	27	128 mm 5"	81 kg. 179 lbs.

Service Instructions

Change hydraulic oil every 12 months

Lubricate the following areas every month: Fitting of Cylinder/oil, Roller Friction Surface/grease, Link Pin/oil, Pedal Fitting Point/oil, Grease Nipple/grease

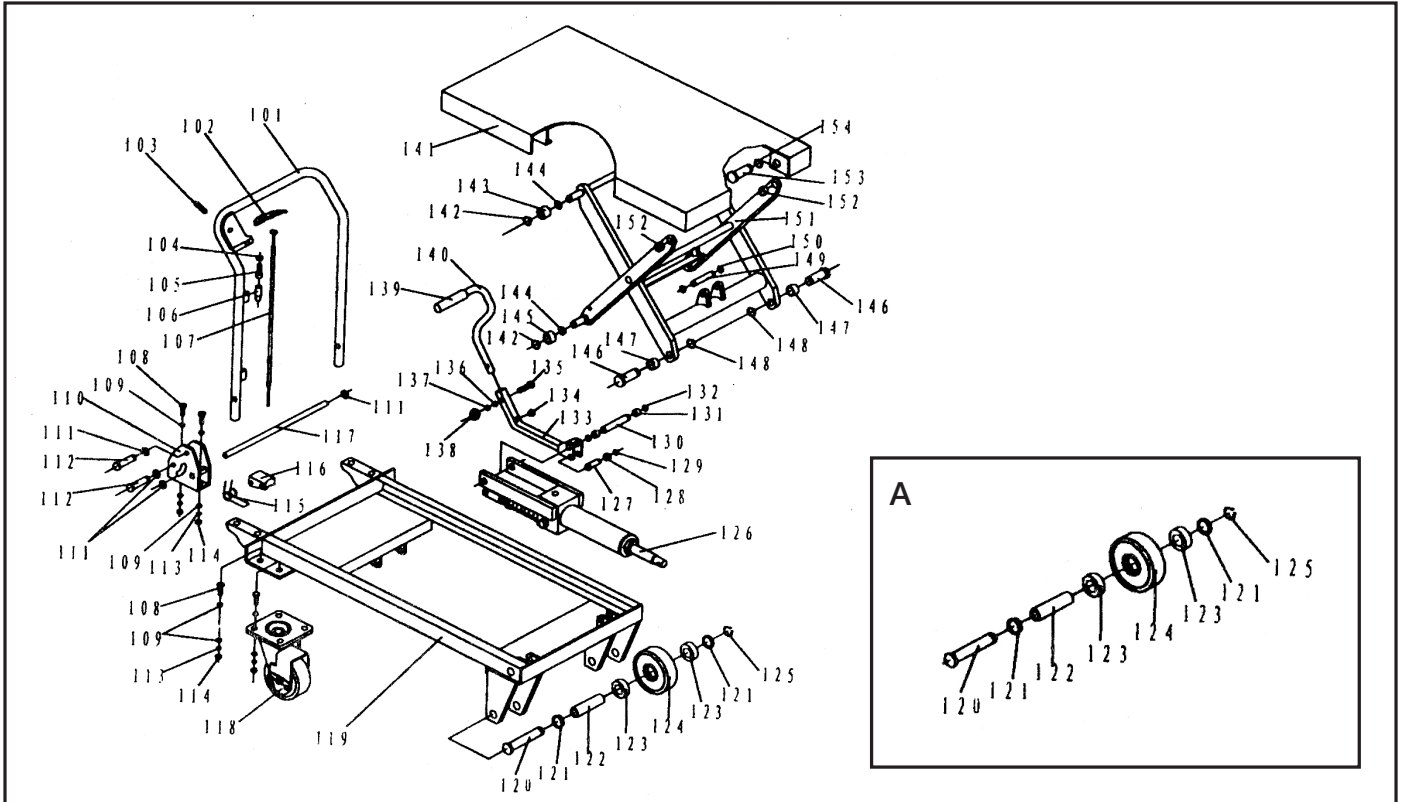
Troubleshooting

If the table does not lift when pressing lifting pedal several times:

- Adjust the control valve located on the hydraulic cylinder (A) by releasing the set screw and locking nut (B) using a flat screwdriver and a 14mm wrench.
- Test the control lever and lifting pedal.

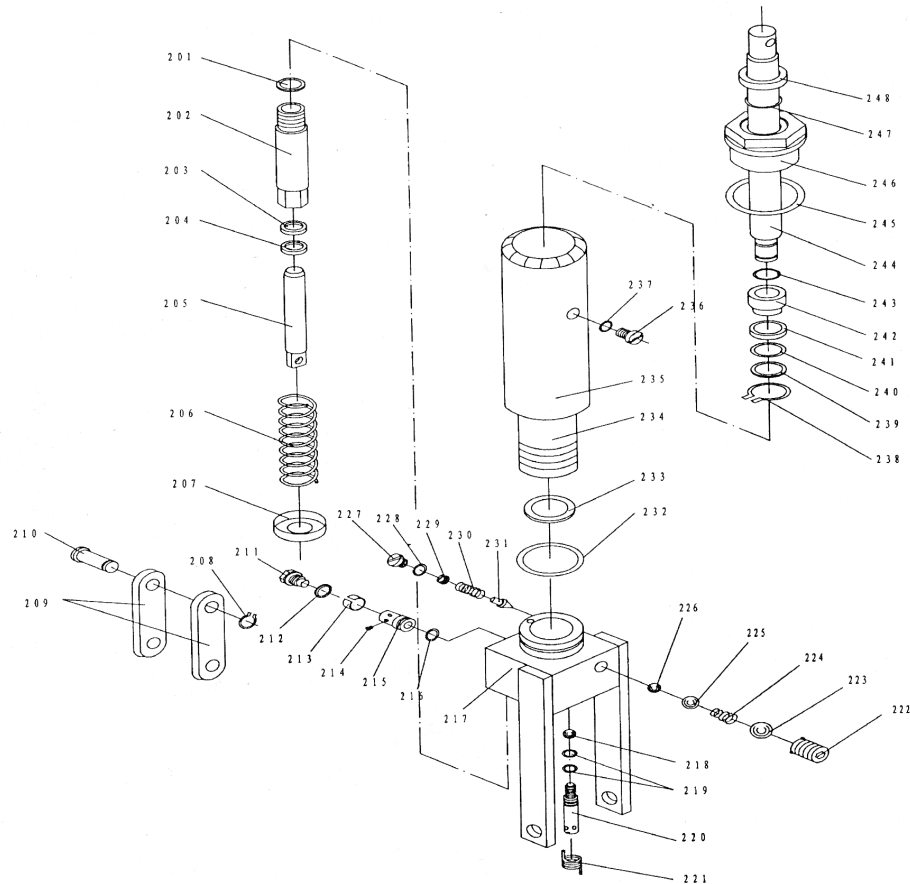


LIFT TABLE PARTS LIST



Part No.	Order No.	Description	Qty.	Part No.	Order No.	Description	Qty.	Part No.	Order No.	Description	Qty.
101	MJ870	Handle Grip	1	122		Axle	2	143		Roller	2
102	MJ871	Control Handle	1	123	MJ892	Bearing	4	144		Washer	4
103	MJ872	Elastic Pin	1	124		Wheel	2	145		Roller	2
104	MJ873	Nut	1	125		Retaining Ring	2	146		Pin	2
105	MJ874	Bolt with Hole	1	126	MJ895	Pump Unit	1	147		Bushing	2
106	MJ875	Jacket	1	127	MJ896	Pin	1	148		Retaining Ring	2
107	MJ762	Pull Rod	1	128	MJ897	Washer	1	149		Pin	1
108		Bolt	12	129	MJ898	Retaining Ring	1	150		Retaining Ring	2
109		Washer	12	130	MJ899	Pin	1	151		Fork Arm	1
110	MJ879	Seat of Grip	2	131		Washer	2	152	MJ807	Bushing	2
111	MJ880	Retaining Ring	6	132	MJ901	Retaining Ring	2	153		Pin	2
112		Pin	4	133		Connecting Rod	1	154		Retaining Ring	2
113		Elastic Washer	12	134		Cushion	1	A	MN687	Wheel Assembly	2
114		Nut	12	135		Bolt	1				
115	MJ884	Spring	2	136		Washer	1				
116	MJ885	Cushion	2	137		Elastic Washer	1				
117		Long Shaft	1	138		Nut	1				
118	MJ996	Universal Wheel	2	139		Protecting Cover	1				
119		Frame	1	140		Pedal Bar	1				
120		Pin	2	141		Table	1				
121		Washer	4	142		Retaining Ring	4				

HYDRAULIC CYLINDER PARTS LIST



Part No.	Order No.	Description	Qty.
201		Seal Washer	1
202		Pump Cylinder	1
203	MJ701	Dust Ring	1
204	MJ702	Y-Seal	1
205		Pump Piston	1
206		Spring	1
207		Spring Cap	1
208	MJ934	Retaining Ring	1
209	MJ935	Joint Plate	2
210	MJ936	Pin	1
211		Pump Body	1
212		Elastic Pin	1
213		Spring	1
214		Strike Pin	1
215	MJ713	Seal Washer	1
216		Axle Sleeve	1
217	MJ715	O-Ring	2
218		Nut	1
219		Screw	1

Part No.	Order No.	Description	Qty.
220		Lever Plate	1
221		Nut	1
222		Elastic Washer	1
223		Washer	1
224		Bolt with Hole	1
225		Bolt with Hole	1
226		Nut	1
227		Plug	1
228	MJ726	O-Ring	1
229		Adjusting Bolt	1
230		Spring	1
231		Spindle of Safety Valve	1
232		Steel Ball	1
233	MJ731	O-Ring	1
234		Seat of Pumping Valve	1
235		Spindle of Pumping Valve	1
236		Spring	1
237		Seal Washer	1
238	MJ736	O-Ring	1

Part No.	Order No.	Description	Qty.
239		Seal Washer	1
240		Cylinder	1
241		Housing	1
242		Bolt	1
243		Seal Washer	1
244		Retaining Ring	1
245		Washer	1
246	MP942	O-Ring	1
247	MJ745	Cup Packing	1
248		Piston	1
249	MJ747	O-Ring	1
250	MJ976	Piston Rod	1
251		Seal Washer	1
252		Cylinder Cap	1
253	MJ751	O-Ring	1
254	MJ752	Dust Ring	1
255		Plug	1
256		Liquid Throttle Sheath	1
257		Bolt	1