
Instruction Manual

MJ520

Mobile Hydraulic Scissor Lift Table

770 lbs. (350 kg)



KLETON

WARNING!

Read this operation manual carefully and understand fully the operating instructions. Improper use of this unit could result in injury.

- DO NOT put foot or hand in scissor mechanism.
- Keep neighbouring persons away from the unit when in use.
- DO NOT stand in front or behind of lift table when it is in use.
- DO NOT crawl under the table.
- DO NOT put foot in front of rolling wheels.
- DO NOT use lift table on slope or inclined surfaces.
- DO NOT lift or ride people on this unit.

CAUTION!

- DO NOT move this unit when lifting or lowering the bed or when the bed is in an elevated position. (Bed must be lowered when the unit is running)
- DO NOT use this table for any purpose other than it's intended use and do not load with more than the rated capacity.
- DO NOT allow persons to operate this table without complete understanding of its operation.
- DO NOT lower the bed too quickly.
- During loading/unloading operation, do not release the parking brake.
- Load should be distributed on at least 80% of the table area. Stop operation of lift table if load becomes too unstable, do not place objects protruding off edge of the bed.
- DO NOT modify lift table without manufacturers written consent.

Daily Inspection

Daily inspection of this unit is critical in order to locate any malfunction or fault. Check the following daily before operating your lift table.

1. Check for bending or cracking of the lift table.
2. Check for any oil leakage from the cylinder.
3. Check for vertical creep of the table.
4. Check for smooth movement of the wheels.
5. Ensure that brakes are fully functional.
6. Ensure that all nuts and bolts are firmly tightened.

Assembly method

The lift table is packed in a cardboard box. Assembling of the handle and jack up pedal is required.

WARNING: Assembly work must be done on a flat surface; wheels must be choked to prevent accidental rolling of the unit.

1. Remove nuts and spring washers from the end of handle and insert the handle into the holes on frame. Tighten the handle using removed nuts and washers with the largest hex key supplied in the box.
 2. Insert the jack pedal into the pedal pipe and position the tapered side pedal end to right. Tighten the jack pedal using the removed nut and washer with the smallest hex key supplied in the box.
-

OPERATING THE LIFT TABLE

How to use the brake

The brake is located next to the swivel caster on right hand side.

1. To brake the lift table, press the brake pedal.
2. To release the brake, lift up the brake pedal.

CAUTION: Put lift table in brake mode when stationary in order to prevent sudden movement.

Lifting the Table

To lift the table, press the lifting pedal several times until the table reaches the desired height. The table lowers slightly after reaching the highest position. Maximum Capacity of this table is 770 lbs. (350kg).

WARNING: Do not overload lift table, stay within the rated capacity.

Do not load the table on sides or ends only. Load must be distributed on at least 80% of table area.

Lowering the Table

WARNING: DO NOT put foot or hand in scissor mechanism. The rotating knob lowers the table.

NOTE: The hydraulic cylinder is designed to hold table. As is the nature of the hydraulic system, table lowers very slowly over an extended period of time. Please note that the table does not stay at the same height indefinitely.

Specifications

Model	Capacity	Table	Table Height	Foot Pedal Strokes to Elevate	Wheel	Weight
MJ520	350 kg. 770 lbs.	910 x 500 mm 35.8"x 19.7"	355-1300 mm 14" - 51.2	53	128 mm 5"	105 kg. 230 lbs.

Service Instructions

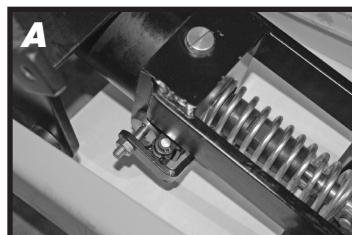
Change hydraulic oil every 12 months

Lubricate the following areas every month: Fitting of Cylinder/oil, Roller Friction Surface/grease, Link Pin/oil, Pedal Fitting Point/oil, Grease Nipple/grease

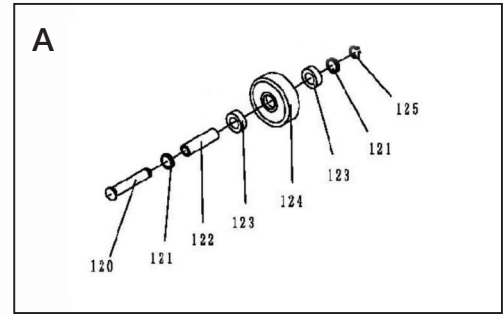
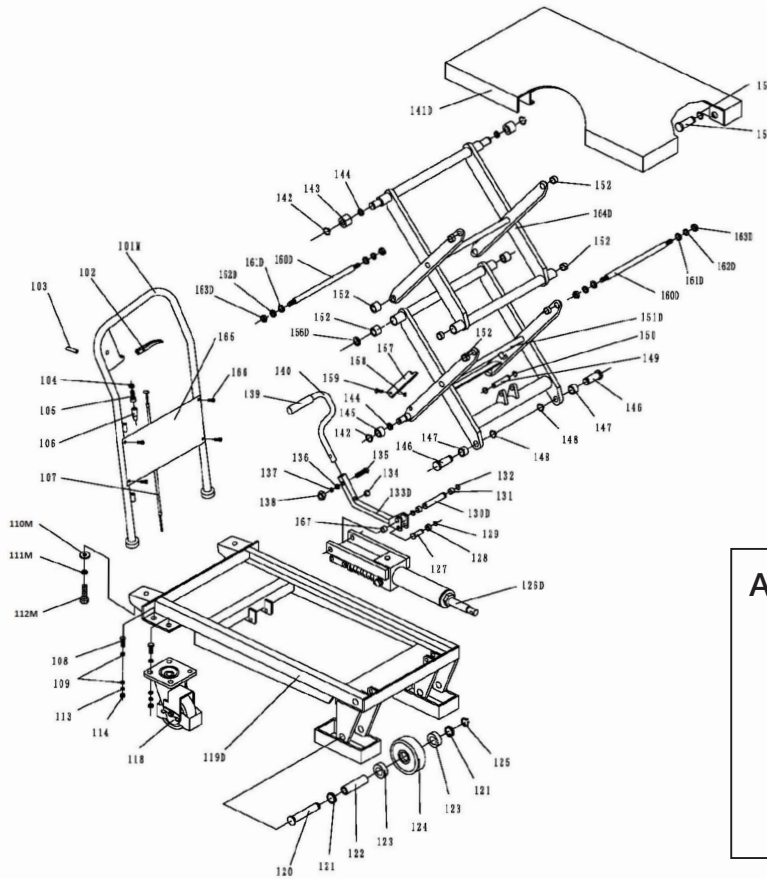
Troubleshooting

If the table does not lift when pressing lifting pedal several times:

- Adjust the control valve located on the hydraulic cylinder (A) by releasing the set screw and locking nut (B) using a flat screwdriver and a 14mm wrench.
- Test the control lever and lifting pedal.

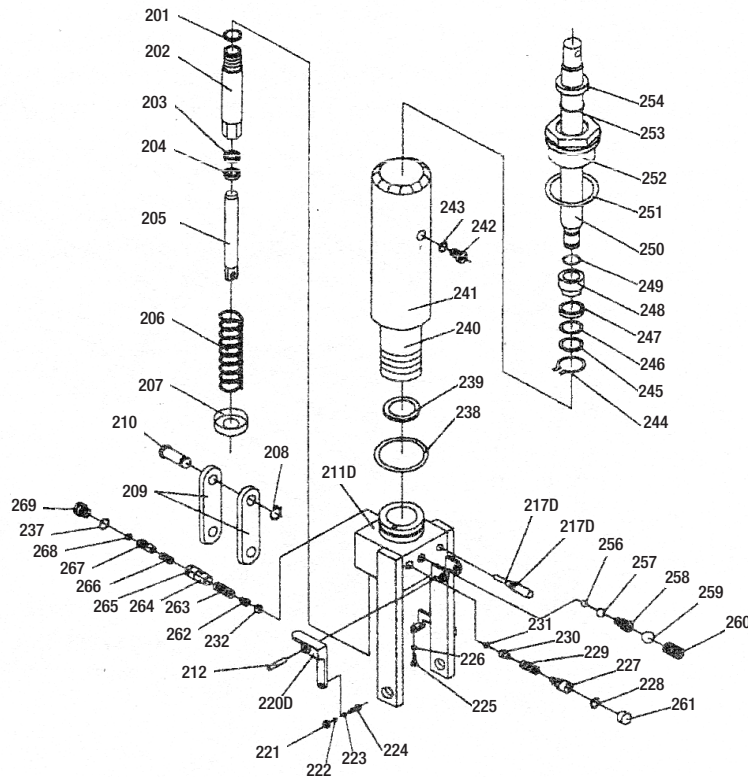


LIFT TABLE PARTS LIST



Part No.	Order No.	Description	Qty.	Part No.	Order No.	Description	Qty.	Part No.	Order No.	Description	Qty.
101M		Handle Grip	1	126D	MK005	Pump Unit	1	148		Retaining Ring	2
102	MJ985	Control Handle	1	127		Pin	1	149		Pin	1
103	MJ986	Elastic Pin	1	128		Washer	1	150		Retaining Ring	2
104	MJ987	Nut	1	129		Retaining Ring	2	151D		Fork Arm	1
105	MJ988	Bolt with Hole	1	130D		Pin	1	152		Bushing	8
106	MJ989	Jacket	1	131		Washer	2	153		Pin	2
107	MJ990	Pull Rod	1	132		Retaining Ring	2	154		Retaining Ring	2
108		Bolt	8	133D		Connecting Rod	1	156D		Washer	4
109		Washer	16	134		Cushion	1	157		Support Plank	2
110M		Big Washer	2	135	MK014	Bolt	1	158		Nut	2
111M		Elastic Washer	2	136		Washer	1	159		Screw	2
112M		Bolt	2	137		Elastic Washer	1	160D		Long Shaft	2
113		Elastic Washer	8	138	MK017	Nut	1	161D		Washer	4
114		Nut	8	139	MK018	Protecting Cover	1	162D		Washer	4
118	MJ996	Universal Wheel	2	140	MK019	Pedal Bar	1	163D		Nut	4
119D	MJ997	Frame	1	141D		Table	1	164D		Top Fork Arm	1
120	MJ998	Pin	2	142		Retaining Ring	2	165		Protecting Board	1
121	MJ999	Washer	4	143		Roller	2	166		Bolt	4
122		Axle	2	144		Washer	2	167		Bushing	2
123	MK002	Bearing	4	145		Roller	2	A	MN686	Wheel Assembly	2
124		Wheel	2	146		Pin	2				
125		Retaining Ring	2	147		Bushing	2				

HYDRAULIC CYLINDER PARTS LIST



Part No.	Order No.	Description	Qty.
201	MK042	Seal Washer	1
202		Pump Cylinder	1
203	MK044	Dust Ring	1
204	MK045	Y-Seal	1
205		Pump Piston	1
206		Spring	1
207		Spring Cap	1
208		Retaining Ring	1
209		Joint Plate	2
210		Pin	1
211D		Pump Body	1
212		Elastic Pin	1
214D		Strike Pin	1
217D	MK055	O-Ring	2
220D		Lever Plate	1
221		Nut	1
222		Elastic Washer	1
223		Washer	1
224		Bolt with Hole	1
225		Bolt With Hole	1
226		Nut	1

Part No.	Order No.	Description	Qty.
227		Adjusting Bolt	1
228	MK063	O-Ring	1
229		Spring	1
230		Seat of Steel Ball	1
231		Steel Ball	1
232		Steel Ball	1
237	MJ713	Seal Washer	1
238	MJ736	O-Ring	1
239	MJ737	Seal Washer	1
240		Cylinder	1
241		Housing	1
242		Bolt	1
243		Seal Washer	1
244		Retaining Ring	1
245		Washer	1
246	MP941	O-Ring	1
247	MJ745	Cup Packing	1
248		Piston	1
249	MJ747	O-Ring	1

Part No.	Order No.	Description	Qty.
250		Piston Rod	1
251	MK082	Seal Washer	1
252		Cylinder Cap	1
253	MJ751	O-Ring	1
254	MJ752	Dust Ring	1
256		Steel Ball	1
257		Steel Ball	1
258		Spring	1
259		Steel Ball	1
260		Screw	1
261		Cup	1
262		Seat of Steel Ball	1
263		Spring	1
264		Seat of Valve	1
265	MK095	O-Ring	1
266		Spring	1
267		Core of Valve	1
268		Retaining Ring	1
269		Plug	1