

---

# **Instruction Manual**

## **MJ519**

### **Mobile Hydraulic Scissor Lift Table**

#### **660 lbs. (300 kg)**



**KLETON**

---

---

## **WARNING!**

Read this operation manual carefully and understand fully the operating instructions. Improper use of this unit could result in injury.

- DO NOT put foot or hand in scissor mechanism.
- Keep neighbouring persons away from the unit when in use.
- DO NOT stand in front or behind of lift table when it is in use.
- DO NOT crawl under the table.
- DO NOT put foot in front of rolling wheels.
- DO NOT use lift table on slope or inclined surfaces.
- DO NOT lift or ride people on this unit.

## **CAUTION!**

- DO NOT move this unit when lifting or lowering the bed or when the bed is in an elevated position. (Bed must be lowered when the unit is running)
- DO NOT use this table for any purpose other than it's intended use and do not load with more than the rated capacity.
- DO NOT allow persons to operate this table without complete understanding of its operation.
- DO NOT lower the bed too quickly.
- During loading/unloading operation, do not release the parking brake.
- Load should be distributed on at least 80% of the table area. Stop operation of lift table if load becomes too unstable, do not place objects protruding off edge of the bed.
- DO NOT modify lift table without manufacturers written consent.

## **Daily Inspection**

Daily inspection of this unit is critical in order to locate any malfunction or fault. Check the following daily before operating your lift table.

1. Check for bending or cracking of the lift table.
2. Check for any oil leakage from the cylinder.
3. Check for vertical creep of the table.
4. Check for smooth movement of the wheels.
5. Ensure that brakes are fully functional.
6. Ensure that all nuts and bolts are firmly tightened.

## **Assembly method**

The lift table is packed in a cardboard box. Assembling of the jack up pedal is required.

**WARNING:** Assembly work must be done on a flat surface; wheels must be chocked to prevent accidental rolling of the unit.

1. Insert the jack pedal into the pedal pipe and position the tapered side pedal end to right. Tighten the jack pedal using the removed nut and washer with the smallest hex key supplied in the box.
-

---

# OPERATING THE LIFT TABLE

## How to use the brake

The brake is located next to the swivel caster on right hand side.

1. To brake the lift table, press the brake pedal.
2. To release the brake, lift up the brake pedal.

**CAUTION:** Put lift table in brake mode when stationary in order to prevent sudden movement.

## Lifting the Table

To lift the table, press the lifting pedal several times until the table reaches the desired height. The table lowers slightly after reaching the highest position. Maximum Capacity of this table is 660 lbs. (300kg).

**WARNING:** Do not overload lift table, stay within the rated capacity.

Do not load the table on sides or ends only. Load must be distributed on at least 80% of table area.

## Lowering the Table

**WARNING:** DO NOT put foot or hand in scissor mechanism. The rotating knob lowers the table.

**NOTE:** The hydraulic cylinder is designed to hold table. As is the nature of the hydraulic system, table lowers very slowly over an extended period of time. Please note that the table does not stay at the same height indefinitely.

## Specifications

Model	Capacity	Table	Table Height	Foot Pedal Strokes to Elevate	Wheel	Weight
MJ519	300 kg. 660 lbs.	815 x 500 mm 32" x 19.7"	285-880 mm 11.2" - 34.6"	27	128 mm 5"	77 kg. 170 lbs.

## Service Instructions

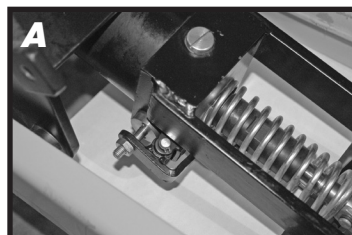
**Change hydraulic oil every 12 months**

**Lubricate the following areas every month:** Fitting of Cylinder/oil, Roller Friction Surface/grease, Link Pin/oil, Pedal Fitting Point/oil, Grease Nipple/grease

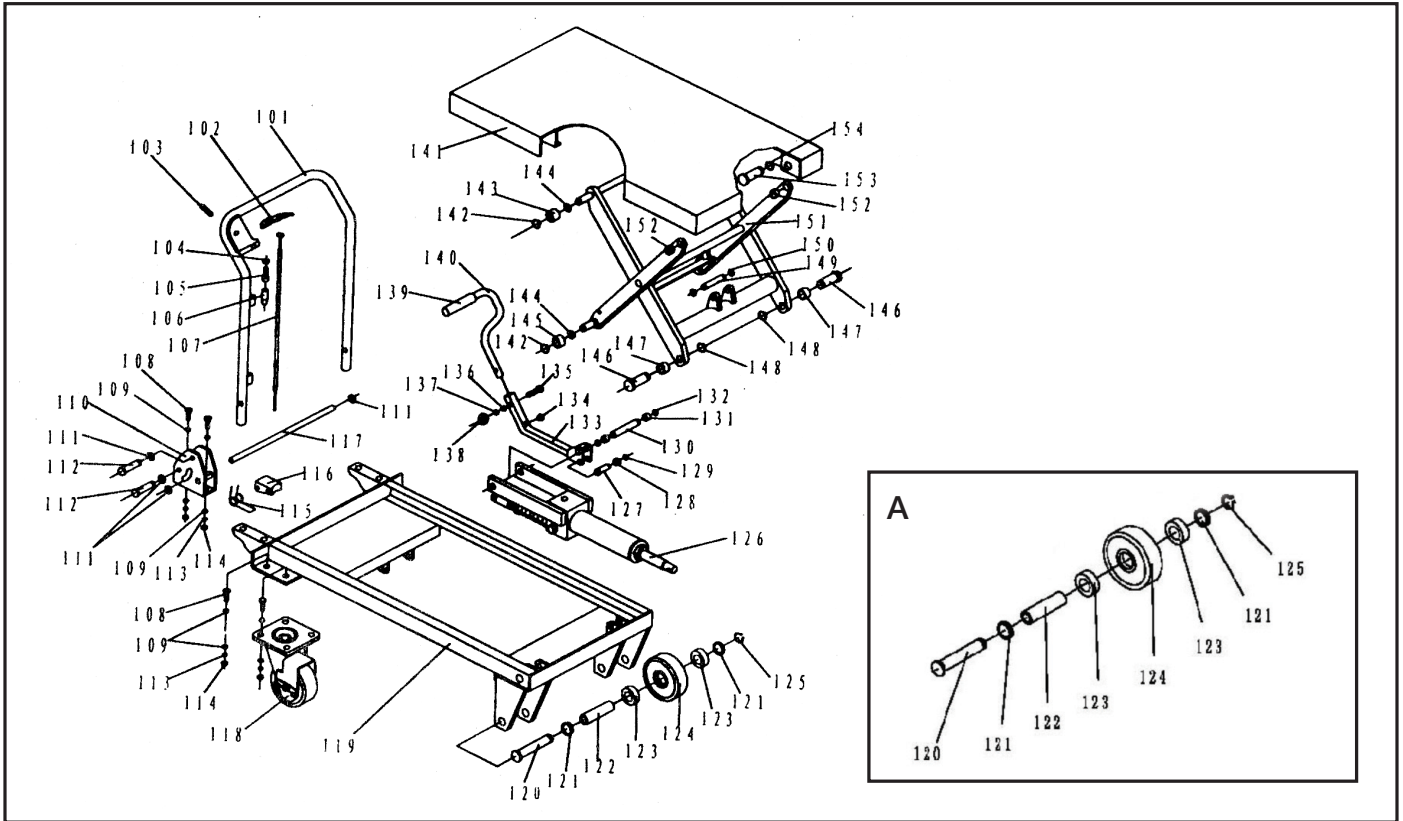
## Troubleshooting

**If the table does not lift when pressing lifting pedal several times:**

- Adjust the control valve located on the hydraulic cylinder (A) by releasing the set screw and locking nut (B) using a flat screwdriver and a 14mm wrench.
- Test the control lever and lifting pedal.



# LIFT TABLE PARTS LIST

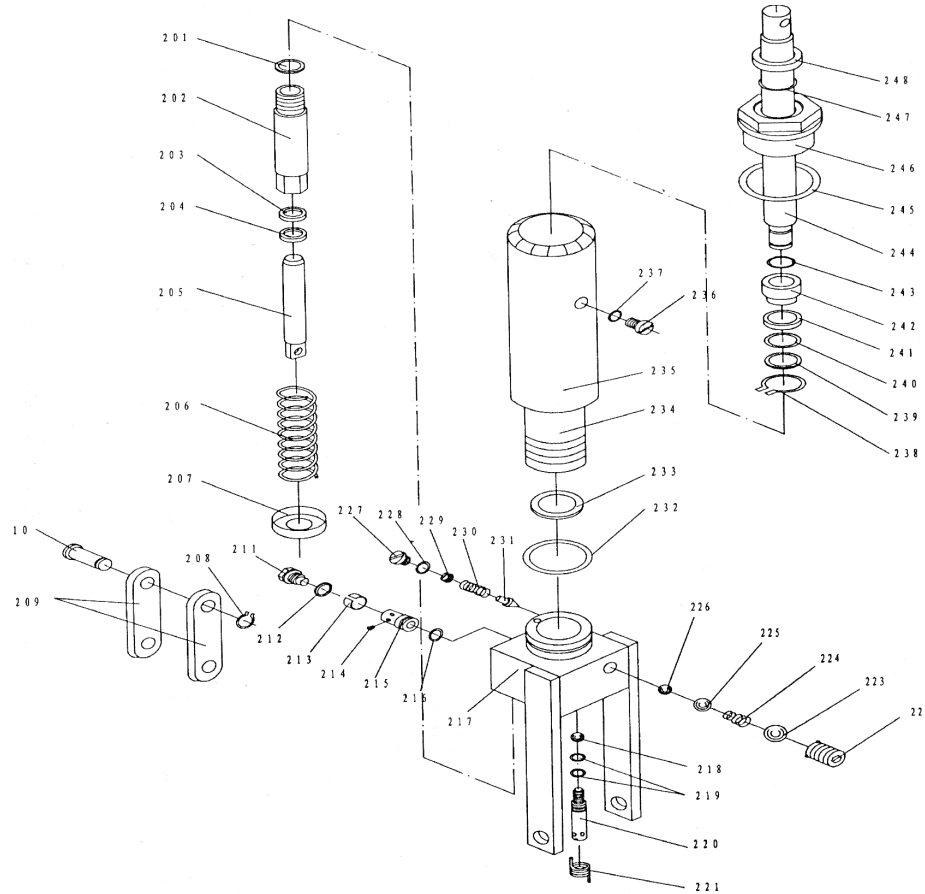


Part No.	Order No.	Description	Qty.
101		Handle Grip	1
102		Control Handle	1
103	MJ758	Elastic Pin	1
104	MJ759	Nut	1
105	MJ760	Bolt with Hole	1
106	MJ761	Jacket	1
107	MJ762	Pull Rod	1
108		Bolt	12
109		Washer	12
110		Seat of Grip	2
111	MJ766	Retaining Ring	6
112	MJ767	Pin	4
113		Elastic Washer	12
114		Nut	12
115		Spring	2
116		Cushion	2
117		Long Shaft	1
118	MJ996	Universal Wheel	2
119		Frame	1
120		Pin	2
121		Washer	4

Part No.	Order No.	Description	Qty.
122		Axle	2
123		Bearing	4
124		Wheel	2
125		Retaining Ring	2
126	MJ781	Pump Unit	1
127		Pin	1
128		Washer	1
129		Retaining Ring	1
130		Pin	1
131		Washer	2
132		Retaining Ring	2
133		Connecting Rod	1
134		Cushion	1
135		Bolt	1
136		Washer	1
137		Elastic Washer	1
138		Nut	1
139		Protecting Cover	1
140		Pedal Bar	1
141		Table	1
142		Retaining Ring	6

Part No.	Order No.	Description	Qty.
143		Roller	2
144		Washer	4
145		Roller	2
146		Pin	2
147		Bushing	2
148		Retaining Ring	2
149		Pin	1
150		Retaining Ring	2
151		Fork Arm	1
152	MJ807	Bushing	2
153		Pin	2
154	MJ809	Retaining Ring	2
A	MN686	Wheel Assembly	2

# HYDRAULIC CYLINDER PARTS LIST



Part No.	Order No.	Description	Qty.	Part No.	Order No.	Description	Qty.	Part No.	Order No.	Description	Qty.
201		Seal Washer	1	220		Lever Plate	1	239	MJ737	Seal Washer	1
202		Pump Cylinder	1	221		Nut	1	240		Cylinder	1
203	MJ701	Dust Ring	1	222		Elastic Washer	1	241		Housing	1
204	MJ702	Y-Seal	1	223		Washer	1	242		Bolt	1
205		Pump Piston	1	224		Bolt with Hole	1	243		Seal Washer	1
206		Spring	1	225		Bolt with Hole	1	244		Retaining Ring	1
207		Spring Cap	1	226		Nut	1	245		Washer	1
208		Retaining Ring	1	227		Plug	1	246	MJ744	O-Ring	1
209		Joint Plate	2	228	MJ726	O-Ring	1	247	MJ745	Cup Packing	1
210		Pin	1	229		Adjusting Bolt	1	248		Piston	1
211		Pump Body	1	230		Spring	1	249	MJ747	O-Ring	1
212		Elastic Pin	1	231		Spindle of Safety Valve	1	250		Piston Rod	1
213	MJ825	Spring	1	232		Steel Ball	1	251		Seal Washer	1
214	MJ826	Strike Pin	1	233		O-Ring	1	252		Cylinder Cap	1
215	MJ713	Seal Washer	1	234		Seat of Pumping Valve	1	253	MJ751	O-Ring	1
216	MJ828	Axle Sleeve	1	235		Spindle of Pumping Valve	1	254	MJ752	Dust Ring	1
217	MJ715	O-Ring	2	236		Spring	1	255		Plug	1
218		Nut	1	237		Seal Washer	1	256		Liquid Throttle Sheath	1
219		Screw	1	238		O-Ring	1	257		Bolt	1