

---

# **Instruction Manual**

## **MJ518**

### **Mobile Hydraulic Scissor Lift Table**

#### **330 lbs. (150 kg)**



**KLETON**

---

---

## **WARNING!**

Read this operation manual carefully and understand fully the operating instructions. Improper use of this unit could result in injury.

- DO NOT put foot or hand in scissor mechanism.
- Keep neighbouring persons away from the unit when in use.
- DO NOT stand in front or behind of lift table when it is in use.
- DO NOT crawl under the table.
- DO NOT put foot in front of rolling wheels.
- DO NOT use lift table on slope or inclined surfaces.
- DO NOT lift or ride people on this unit.

## **CAUTION!**

- DO NOT move this unit when lifting or lowering the bed or when the bed is in an elevated position. (Bed must be lowered when the unit is running)
- DO NOT use this table for any purpose other than it's intended use and do not load with more than the rated capacity.
- DO NOT allow persons to operate this table without complete understanding of its operation.
- DO NOT lower the bed too quickly.
- During loading/unloading operation, do not release the parking brake.
- Load should be distributed on at least 80% of the table area. Stop operation of lift table if load becomes too unstable, do not place objects protruding off edge of the bed.
- DO NOT modify lift table without manufacturers written consent.

## **Daily Inspection**

Daily inspection of this unit is critical in order to locate any malfunction or fault. Check the following daily before operating your lift table.

1. Check for bending or cracking of the lift table.
2. Check for any oil leakage from the cylinder.
3. Check for vertical creep of the table.
4. Check for smooth movement of the wheels.
5. Ensure that brakes are fully functional.
6. Ensure that all nuts and bolts are firmly tightened.

## **Assembly method**

The lift table is packed in a cardboard box. Assembling of the jack up pedal is required.

**WARNING:** Assembly work must be done on a flat surface; wheels must be chocked to prevent accidental rolling of the unit.

1. Insert the jack pedal into the pedal pipe and position the tapered side pedal end to right. Tighten the jack pedal using the removed nut and washer with the smallest hex key supplied in the box.
-

---

# OPERATING THE LIFT TABLE

## How to use the brake

The brake is located next to the swivel caster on right hand side.

1. To brake the lift table, press the brake pedal.
2. To release the brake, lift up the brake pedal.

**CAUTION:** Put lift table in brake mode when stationary in order to prevent sudden movement.

## Lifting the Table

To lift the table, press the lifting pedal several times until the table reaches the desired height. The table lowers slightly after reaching the highest position. Maximum Capacity of this table is 330 lbs. (150kg).

**WARNING:** Do not overload lift table, stay within the rated capacity.

Do not load the table on sides or ends only. Load must be distributed on at least 80% of table area.

## Lowering the Table

**WARNING:** DO NOT put foot or hand in scissor mechanism. The rotating knob lowers the table.

**NOTE:** The hydraulic cylinder is designed to hold table. As is the nature of the hydraulic system, table lowers very slowly over an extended period of time. Please note that the table does not stay at the same height indefinitely.

## Specifications

Model	Capacity	Table	Table Height	Foot Pedal Strokes to Elevate	Wheel	Weight
MJ518	150 kg. 330 lbs.	450 x 700 mm 17.7" x 27.5"	220-720 mm 8.6" x 28.3"	28	100 mm 4"	45 kg. 99 lbs.

## Service Instructions

**Change hydraulic oil every 12 months**

**Lubricate the following areas every month:** Fitting of Cylinder/oil, Roller Friction Surface/grease, Link Pin/oil, Pedal Fitting Point/oil, Grease Nipple/grease

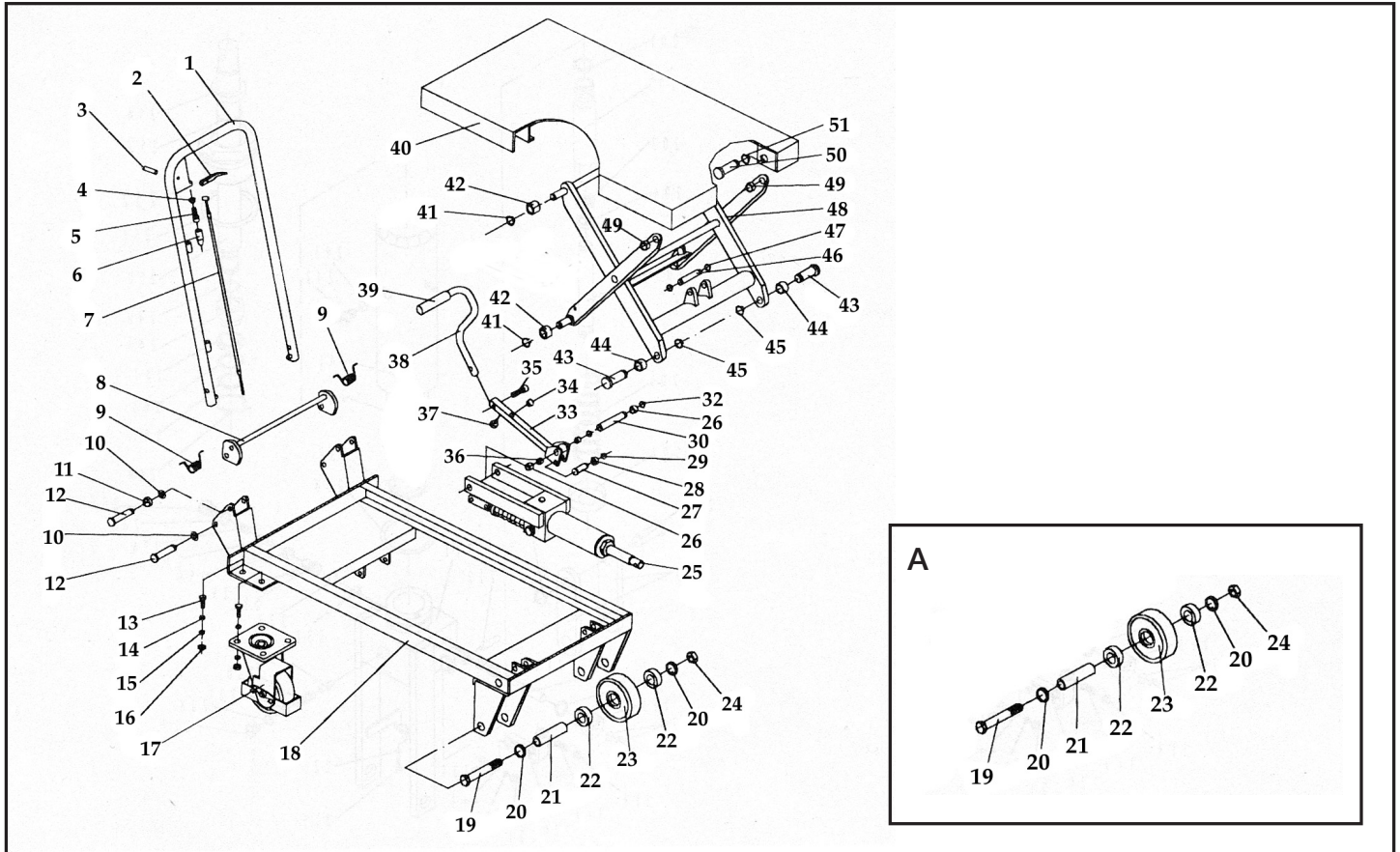
## Troubleshooting

**If the table does not lift when pressing lifting pedal several times:**

- Adjust the control valve located on the hydraulic cylinder (A) by releasing the set screw and locking nut (B) using a flat screwdriver and a 14mm wrench.
- Test the control lever and lifting pedal.

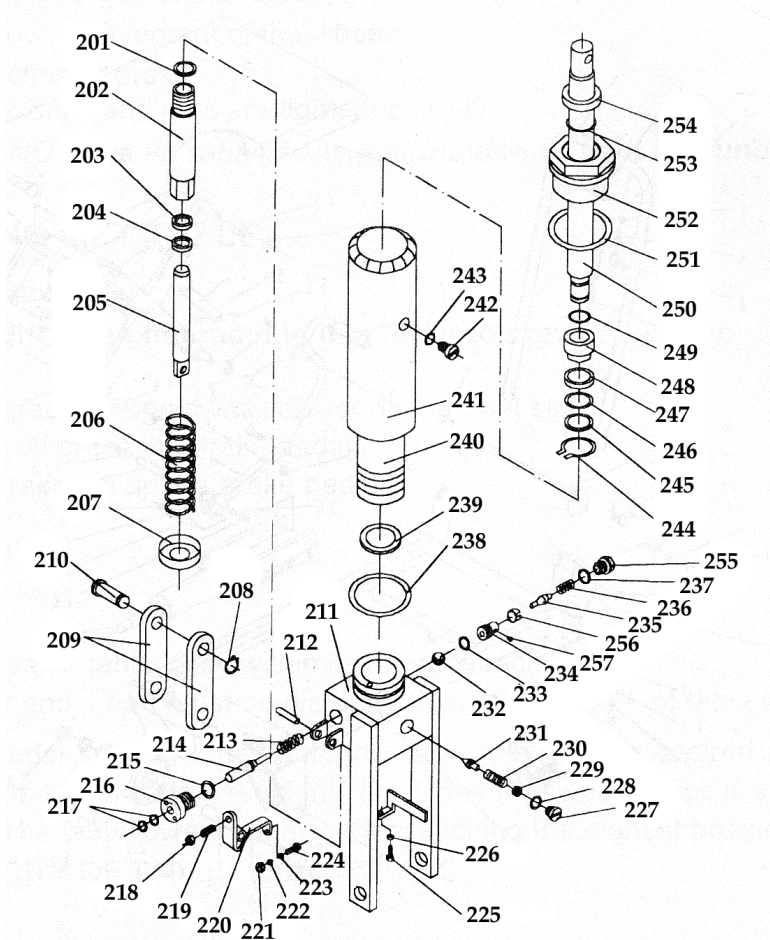


# LIFT TABLE PARTS LIST



Part No.	Order No.	Description	Qty.	Part No.	Order No.	Description	Qty.	Part No.	Order No.	Description	Qty.
1	MJ645	Handle Grip	1	20	MJ664	Washer	4	40	MJ683	Table	1
2	MJ646	Control Handle	1	21	MJ665	Axle	2	41	MJ684	Retaining Ring	4
3	MJ647	Elastic Pin	1	22	MJ666	Bearing	4	42	MJ685	Roller	4
4	MJ648	Nut	1	23	MJ667	Wheel	2	43	MJ686	Pin	2
5	MJ649	Bolt with Hole	1	24	MJ668	Nut	2	44	MJ687	Bushing	2
6	MJ989	Jacket	1	25	MJ669	Pump Unit	1	45	MJ688	Retaining Ring	2
7	MJ651	Pull Line	1	26	MJ670	Washer	2	46	MJ689	Pin	1
8	MJ652	Long Shaft	1	27	MJ671	Pin	1	47	MJ690	Retaining Ring	2
9	MJ653	Spring	2	28	MJ672	Washer	1	48	MJ691	Fork Arm	1
10	MJ654	Retaining Ring	4	29	MJ673	Retaining Ring	1	49	MJ692	Bushing	2
11	MJ655	Washer	2	30	MJ674	Pin	1	50	MJ693	Pin	2
12	MJ656	Pin	4	32	MJ675	Retaining Ring	2	51	MJ694	Retaining Ring	2
13	MJ657	Bolt	8	33	MJ676	Connecting	1	A	MN529	Wheel Assembly	2
14	MJ658	Washer	8	34	MJ677	Cushion	1				
15	MJ659	Elastic Washer	8	35	MJ678	Bolt	1				
16	MJ660	Nut	8	36	MJ679	Bushing	2				
17	MJ661	Universal Wheel	2	37	MJ680	Cushion	1				
18	MJ662	Frame	1	38	MJ681	Pedal Bar	1				
19	MJ663	Bolt	2	39	MJ682	Protecting Cover	1				

# HYDRAULIC CYLINDER PARTS LIST



Part No.	Order No.	Description	Qty.	Part No.	Order No.	Description	Qty.	Part No.	Order No.	Description	Qty.
201	MJ699	Seal Washer	1	220	MJ718	Lever Plate	1	239	MJ737	Seal Washer	1
202	MJ700	Pump Cylinder	1	221	MJ719	Nut	1	240	MJ738	Cylinder	1
203	MJ701	Dust Ring	1	222	MJ720	Elastic Washer	1	241	MJ739	Housing	1
204	MJ702	Y-Seal	1	223	MJ721	Washer	1	242	MJ740	Bolt	1
205	MJ703	Pump Piston	1	224	MJ722	Bolt with Hole	1	243	MJ741	Seal Washer	1
206	MJ704	Spring	1	225	MJ723	Bolt with Hole	1	244	MJ742	Retaining Ring	1
207	MJ705	Spring Cap	1	226	MJ724	Nut	1	245	MJ743	Washer	1
208	MJ706	Retaining Ring	1	227	MJ725	Plug	1	246	MJ744	O-Ring	1
209	MJ707	Joint Plate	2	228	MJ726	O-Ring	1	247	MJ745	Cup Packing	1
210	MJ708	Pin	1	229	MJ727	Adjusting Bolt	1	248	MJ746	Piston	1
211	MJ709	Pump Body	1	230	MJ728	Spring	1	249	MJ747	O-Ring	1
212	MJ710	Elastic Pin	1	231	MJ729	Spindle of Safety Valve	1	250	MJ748	Piston Rod	1
213	MJ711	Spring	1	232	MJ730	Steel Ball	1	251	MJ749	Seal Washer	1
214	MJ712	Strike Pin	1	233	MJ731	O-Ring	1	252	MJ750	Cylinder Cap	1
215	MJ713	Seal Washer	2	234	MJ732	Seat of Pumping Valve	1	253	MJ751	O-Ring	1
216	MJ714	Axle Sleeve	1	235	MJ733	Spindle of Pumping Valve	1	254	MJ752	Dust Ring	1
217	MJ715	O-Ring	1	236	MJ734	Spring	1	255	MJ753	Plug	1
218	MJ716	Nut	1	237	MJ735	Seal Washer	1	256	MJ754	Liquid Throttle Sheath	1
219	MJ717	Screw	1	238	MJ736	O-Ring		257	MJ755	Bolt	1